

## Product datasheet for **RG205505**

### **RAB18 (NM\_021252) Human Tagged ORF Clone**

#### Product data:

**Product Type:** Expression Plasmids  
**Product Name:** RAB18 (NM\_021252) Human Tagged ORF Clone  
**Tag:** TurboGFP  
**Symbol:** RAB18  
**Synonyms:** RAB18LI1; WARBM3  
**Mammalian Cell Selection:** Neomycin  
**Vector:** pCMV6-AC-GFP (PS100010)  
**E. coli Selection:** Ampicillin (100 ug/mL)  
**ORF Nucleotide Sequence:** >RG205505 representing NM\_021252  
 Red=Cloning site Blue=ORF Green=Tags(s)

TTTTGTAATACGACTCACTATAGGGCGCCGGGAATTCGTCGACTGGATCCGGTACCGAGGAGATCTGCC  
 GCC**CGATCGCC**

ATGGACGAGGACGTGCTAACCACCCTGAAGATCCTCATCATCGGCGAGAGTGGGGTGGGCAAGTCCAGCC  
 TGCTCTTGAGGTTACAGATGATACGTTTGATCCAGAACTGCAGCAACAATAGGTGTTGACTTTAAGGT  
 GAAAACAATTTTCAGTGGATGAAATAAGGCTAACTTGAATATGGGATACTGCTGGTCAAGAGAGGTTT  
 AGAACATTAACCTCCAGCTATTATAGAGGTGCACAGGGTGTATATTAGTTTATGATGTCACAAGAAGAG  
 ATACATTTGTTAACTGGATAATTGGTTAAATGAATTGAAACATACTGTACAAGAAATGACATAGTAAA  
 CATGCTAGTTGAAATAAAATCGATAAGGAAAATCGTGAAGTCGATAGAAATGAAGGCCTGAAATTTGCA  
 CGAAAGCATTCCATGTTATTTATAGAGGCAAGTGCAAAAACCTGTGATGGTGTACAATGTGCCTTTGAAG  
 AACTTGTGAAAAGATCATTAGACCCCTGGACTGTGGGAAAGTGAGAACCAGAAATAAAGGAGTCAAAC  
 GTCACACAGGGAAGAAGGCCAAGGAGGAGGAGCCTGTGGTGGTTATTGCTCTGTGTTA

**ACGCGTACGCGGCCGCTCGAG** - GFP Tag - GTTTAA

**Protein Sequence:** >RG205505 representing NM\_021252  
 Red=Cloning site Green=Tags(s)

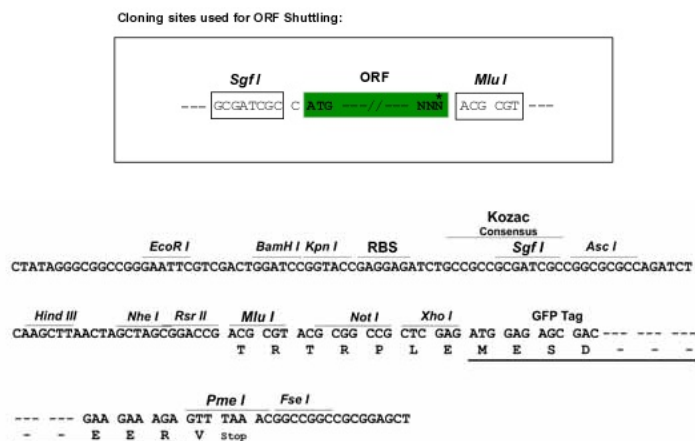
MDEDVLTTLKILIIIGESGVGKSSLLLRFTDDTFDPELAATIGVDFKVKTISVDGNKAKLAIWDTAGQERF  
 RTLTPSYRGAQGVILVYDVTRRDTFVKLDNWLNELEYCTRNDIVNMLVGNKIDKENREVDNRNEGLKFA  
 RKHSMFLIEASAKTCDGVQCAFEELVEKIIQTPGLWESENQNKGVKLSHREEGQGGGACGGYCSVL

**TRTRPLE** - GFP Tag - V

**Restriction Sites:** Sgfl-MluI



[View online »](#)

**Cloning Scheme:**


**ACCN:** NM\_021252

**ORF Size:** 618 bp

**OTI Disclaimer:** The molecular sequence of this clone aligns with the gene accession number as a point of reference only. However, individual transcript sequences of the same gene can differ through naturally occurring variations (e.g. polymorphisms), each with its own valid existence. This clone is substantially in agreement with the reference, but a complete review of all prevailing variants is recommended prior to use. [More info](#)

**OTI Annotation:** This clone was engineered to express the complete ORF with an expression tag. Expression varies depending on the nature of the gene.

**Components:** The ORF clone is ion-exchange column purified and shipped in a 2D barcoded Matrix tube containing 10ug of transfection-ready, dried plasmid DNA (reconstitute with 100 ul of water).

**Reconstitution Method:**

1. Centrifuge at 5,000xg for 5min.
2. Carefully open the tube and add 100ul of sterile water to dissolve the DNA.
3. Close the tube and incubate for 10 minutes at room temperature.
4. Briefly vortex the tube and then do a quick spin (less than 5000xg) to concentrate the liquid at the bottom.
5. Store the suspended plasmid at -20°C. The DNA is stable for at least one year from date of shipping when stored at -20°C.

**RefSeq:** [NM\\_021252.5](#)

**RefSeq Size:** 2809 bp

**RefSeq ORF:** 621 bp

**Locus ID:** 22931

**UniProt ID:** [Q9NP72](#)

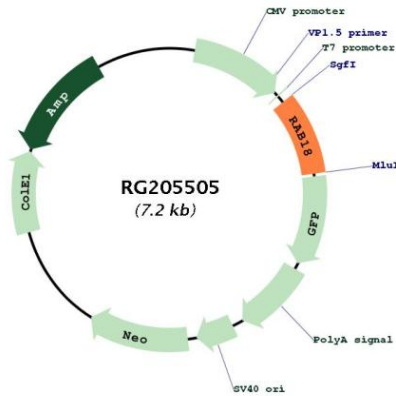
**Cytogenetics:** 10p12.1

**Domains:** ras, RAN, RAS, RHO, RAB, ARF

**Protein Families:** Druggable Genome

**Gene Summary:** The protein encoded by this gene is a member of a family of Ras-related small GTPases that regulate membrane trafficking in organelles and transport vesicles. Knockdown studies in zebrafish suggest that this protein may have a role in eye and brain development. Mutations in this gene are associated with Warburg micro syndrome type 3. Alternatively spliced transcript variants have been found for this gene. [provided by RefSeq, Jan 2012]

**Product images:**



Circular map for RG205505