

Product datasheet for **RG205497**

WDR48 (NM_020839) Human Tagged ORF Clone

Product data:

Product Type:	Expression Plasmids
Product Name:	WDR48 (NM_020839) Human Tagged ORF Clone
Tag:	TurboGFP
Symbol:	WDR48
Synonyms:	Bun62; P80; SPG60; UAF1
Mammalian Cell Selection:	Neomycin
Vector:	pCMV6-AC-GFP (PS100010)
E. coli Selection:	Ampicillin (100 ug/mL)



[View online »](#)

ORF Nucleotide
Sequence:

>RG205497 representing NM_020839
Red=Cloning site Blue=ORF Green=Tags(s)

TTTTGTAATACGACTCACTATAGGGCGGCCGGGAATTCGTCGACTGGATCCGGTACCGAGGAGATCTGCC
GCCCGCATCGCC

ATGGCGGCCCATCACCGCAGAACACAGCAGGGCGGAGGAAAGTGCAGGTTTCCTATGTTATTCGAGATG
AAGTGGAGAAGTACAACCGAAATGGAGTCAATGCTCTGCAGCTGGATCCAGCACTAAATAGACTTTTCAC
AGCCGGTCGAGACTCTATCATAAGAATATGGAGTGTCAATCAGCACAAGCAAGATCCATATATAGCATCT
ATGGAACACCATACTGATTGGGTAACGACATTGACTCTGTTGTAATGGGAAAACATTAATATCTGCTT
CTTCTGACACGACAGTAAAAGTATGGAATGCACACAAGGGATTTTGCATGTCAACATTAAGGACACATAA
GGATTACGTAAGGCCTTAGCATATGCCAAGGATAAAGAAGTACTAGCATCAGCTGGGTTGGACAGACAA
ATATTCTTTGGGATGTGAATACTCTAACAGCATTGACTGCCTCAATAACACTGTCACAACCTTCTTCTT
TAAGTGGAAAACAAAGATTCCATTTATAGCCTGGCCATGAATCAACTGGGAACAATCATTGTATCAGGGTC
CACTGAAAAGGTGTTACGGGTATGGGATCCAAGAACATGTGCAAACTAATGAAGCTTAAAGGGCACACG
GATAATGTGAAGGCATTGCTATTAACAGAGATGGCAGCAATGCCTGTCAGGCAGTTCTGATGGGACAA
TTCGCCTTTGGTCCCTTGGCCAGCAGAGATGTATAGCAACATACCGAGTCCATGATGAAGGTGTTGGGC
GCTGCAAGTCAATGATGCCTTACACATGTGTATTCTGGTGAAGGGACAGGAAGATTTATTGTACAGAC
CTAAGAAACCCTGACATTCGGGTGCTAATTTGTGAAGAAAAGCACCAGTTCTCAAGATGGAGCTTGATA
GATCAGCTGATCCTCCTCCTGCAATTTGGGTTGCAACAACCTAAGTCTACAGTAAATAATGGACTTTGAA
AGGAATTCATAATTTAGAGCCTCTGGAGATTATGACAATGACTGTACAAATCCTATAACACCTCTTTGT
ACACAACCTGACCAGGTTATTAAGGGGGTGTAGTATTATTAGTCCACATTCCTAATGATAAGAGAC
ATATATTAACCAAAGATACCAATAATAATGTGGCATATTGGGATGTATTGAAGGCATGTAAGTTGAAGA
TCTGGGCAAAGTGGATTTTGAAGATGAAATTAAGAAAAGATTTAAAATGGTGTATGTGCCAAATTGGTTC
TCAGTAGACTTAAAAACAGGGATGTTAACTATTACTTTGGATGAAAAGTATTGTTTTGCTGCCTGGGTTT
CTGCAAAAAGATGCTGGTTTTCAGCAGCCCTGATGGGTGAGATCCAAAATTGAATTTAGGAGGACTTTTACT
CCAAGCACTCCTGGAATATTGGCCTAGAACACATGTGAATCCAATGGATGAAGAGGAAAATGAAGTAAAC
CATGTAATGGGAGCAGGAGAACCAGTGCAGAAGGGAAATGGATATTTTCAAGTGCCCCACATACAC
CCGTGATCTTTGGTGAAGCTGGAGGTCGCACACTGTTCCAGGCTGCTCTGCCGAGATTCGGGGGTGAGAC
TGAGTCTATGCTTCTTAATGAAACAGTCCACAATGGGTAAATGACATCACTGTGGATAAAAAATATGCC
AAATTCACAAAATTCCTTTCTACCTCCAACCTCATGCATCTTCAGGAGCAAAAACCTTAAAAAAGATA
GACTCTCTGCTAGTGACATGCTCCAAGTCCGAAAAGTTATGGAACATGTTTATGAAAAAATTATCAACT
GGATAATGAGTCTCAAACCACTAGCTCTTCTAATAATGAAAAACCAGGAGAACAGGAAAAAGAAAGAT
ATTGCTGTGTTGGCAGAGGAGAAAATGAACTTTTGTGCCAAGACCAGGTTTTGGATCCAAATATGGACC
TTCGAACAGTGAACACTTCATATGGAAGAGCGGTGGAGACCTCACCTCCATTACCGTCAGAAGTCCAC
G

ACGCGTACGCGGCCGCTCGAG - GFP Tag - GTTTAA

Protein Sequence: >RG205497 representing NM_020839
 Red=Cloning site Green=Tags(s)

MAAHRQNTAGRKRKQVSYVIRDEVEKYNRNGVNALQLDPALNRLFAGRDSIIRIWSVNVQHKQDPYIAS
 MEHHTDWN DIVLCCNGKTLISASD TTVKVNNAHKGFCMSTLRTHKDYKALAYAKDKELVASAGLDRQ
 IFLWDVNTLTAL TASNNTVTTSSL SGNKDSIYSLAMNQLGTIIIVSGSTEVLRVWDPRTCAKLMKLGHT
 DNVKALLLN RDGTQCLSGSSDGTIRLWSL GQQRCIATYRVHDEGVWALQVNDAFTHVYSGGRDRKIYCTD
 LRNPDIRVLICEEKAPVLKME LDRSADPPP AIWVATTKSTV NKWTLKGIHNF RASGDYDNDCTNPITPLC
 TQPDQVIKGGASIIQCHILNDRHILTKDTN NNVA YWV LKACKVEDLGKVD FEDEIKKRKFMVYV PNWF
 SVDLKTGMLTITLDESDFAAWVS AKDAGFSSPDGSDPKLNLG LLLQALLEYWRTHVNP MDEEENEVN
 HVNGEQENRVQKNGYFQVPPHTP VIFGEAGGRTLFRLLCRDSSGETESMLLNETVPQWVIDITVDKNMP
 KFNKIPFYLQPHASSGAKTLKKDR L SASDMLQVRKVMH VYEKIINLDNESQTTSSSNNEKPGEQEKEED
 IAVLAE EKIELLCQDQVLDPNMDLRTVKHFIWKS GDDLTLHYRQKST

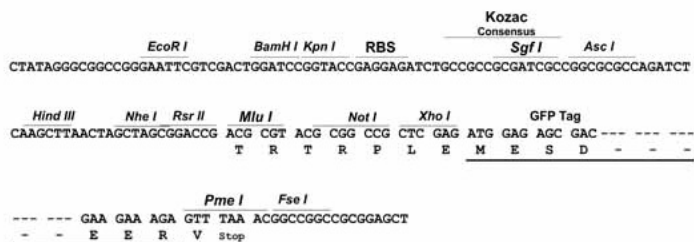
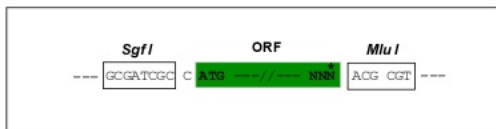
TRTRPLE - GFP Tag - V

Restriction Sites:

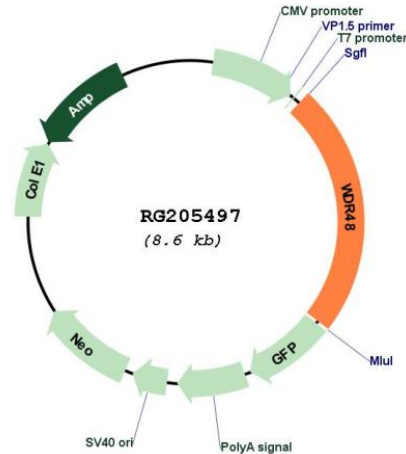
SgfI-MluI

Cloning Scheme:

Cloning sites used for ORF Shuttling:



Plasmid Map:



ACCN: NM_020839

ORF Size: 2031 bp

OTI Disclaimer: The molecular sequence of this clone aligns with the gene accession number as a point of reference only. However, individual transcript sequences of the same gene can differ through naturally occurring variations (e.g. polymorphisms), each with its own valid existence. This clone is substantially in agreement with the reference, but a complete review of all prevailing variants is recommended prior to use. [More info](#)

OTI Annotation: This clone was engineered to express the complete ORF with an expression tag. Expression varies depending on the nature of the gene.

Components: The ORF clone is ion-exchange column purified and shipped in a 2D barcoded Matrix tube containing 10ug of transfection-ready, dried plasmid DNA (reconstitute with 100 ul of water).

Reconstitution Method:

1. Centrifuge at 5,000xg for 5min.
2. Carefully open the tube and add 100ul of sterile water to dissolve the DNA.
3. Close the tube and incubate for 10 minutes at room temperature.
4. Briefly vortex the tube and then do a quick spin (less than 5000xg) to concentrate the liquid at the bottom.
5. Store the suspended plasmid at -20°C. The DNA is stable for at least one year from date of shipping when stored at -20°C.

RefSeq: [NM_020839.2](#), [NP_065890.1](#)

RefSeq Size: 3705 bp

RefSeq ORF: 2034 bp

Locus ID: 57599

UniProt ID: [Q8TAF3](#)

Cytogenetics: 3p22.2

Domains: WD40

Gene Summary: The protein encoded by this gene has been shown to interact with ubiquitin specific peptidase 1 (USP1), activating the deubiquitinating activity of USP1 and allowing it to remove the ubiquitin moiety from monoubiquitinated FANCD2. FANCD2 is ubiquitinated in response to DNA damage. [provided by RefSeq, Sep 2016]