

## Product datasheet for **RG205493**

### **LRRN5 (LRRN2) (NM\_201630) Human Tagged ORF Clone**

#### **Product data:**

Product Type:	Expression Plasmids
Product Name:	LRRN5 (LRRN2) (NM_201630) Human Tagged ORF Clone
Tag:	TurboGFP
Symbol:	LRRN5
Synonyms:	FIGLER7; GAC1; LRANK1; LRRN5
Mammalian Cell Selection:	Neomycin
Vector:	pCMV6-AC-GFP (PS100010)
E. coli Selection:	Ampicillin (100 ug/mL)



[View online »](#)

**ORF Nucleotide Sequence:**

>RG205493 representing NM\_201630  
 Red=Cloning site Blue=ORF Green=Tags(s)

TTTTGTAATACGACTCACTATAGGGCGGCCGGGAATTCGTCGACTGGATCCGGTACCGAGGAGATCTGCC  
 GCC**CGCATCGCC**

ATGAGGCTTCTCGTGGCCCCACTTTGCTAGCTTGGGTGGCTGGTGCCACTGCCGCTGTGCCGTGGTAC  
 CCTGGCATGTTCCCTGCCCCCTCAGTGTGCCTGCCAGATCCGGCCCTGGTATACGCCCCGCTCGTCCTA  
 CCGCGAGGCTACCACTGTGGACTGCAATGACCTATTCTGACGGCAGTCCCCCGGCACTCCCCGCAGGC  
 ACACAGACCCTGCTCCTGCAGAGCAACAGCATTGTCCGTGTGGACCAGAGTGAGCTGGGCTACCTGGCCA  
 ATCTCACAGAGCTGGACCTGTCCAGAACAGCTTTTCGGATGCCCGAGACTGTGATTTCCATGCCCTGCC  
 CCAGCTGCTGAGCCTGCACCTAGAGGAGAACCAGCTGACCCGGCTGGAGGACCACAGCTTTGACAGGGCTG  
 GCCAGCCTACAGGAACCTATCTCAACCACAACCAGCTTACCGCATCGCCCCAGGGCCTTTTCTGGCC  
 TCAGCAACTTGTGCGGCTGCACCTCAACTCCAACCTCCTGAGGGCCATTGACAGCCGCTGGTTTGAAT  
 GCTGCCAACTTGGAGATACTCATGATTGGCGGCAACAAGGTAGATGCCATCCTGGACATGAACTCCGG  
 CCCTGGCCAACCTGCGTAGCCTGGTGTAGCAGGCATGAACCTGCGGGGAGATCTCCGACTATGCCCTGG  
 AGGGGCTGCAAAGCCTGGAGAGCCTCTCCTTCTATGACAACCAGCTGGCCCGGGTGGCCAGGCGGGCACT  
 GGAACAGGTGCCCGGGCTCAAGTTCCTAGACCTCAACAAGAACCCTCCAGCGGGTAGGGCCGGGGGAC  
 TTTGCCAATGCTGCACCTTAAGGAGCTGGGACTGAACAATGAGGAGCTGGTCTCCATCGACAAGT  
 TTGCCCTGGTGAACCTCCCCGAGCTGACCAAGCTGGACATCACCATAACCCACGGCTGTCTTCATCCA  
 CCCCCGCGCTTCCACCCTGCCCCAGATGGAGACCCTCATGCTCAACAACAACGCTCTCAGTGCCTTG  
 CACCAGCAGACGGCGGAGTCCCTGCCAACCTGCAGGAGGTAGGTCTCCACGGCAACCCCATCCGCTGTG  
 ACTGTGCATCCGCTGGGCAATGCCACGGGCACCCGTGCCGTTTCATCGAGCCGAATCCACCCTGTG  
 TCGGAGCCTCCGGACCTCCAGCGCTCCCGGTCCGTGAGGTGCCCTTCCGGGAGATGACGGACCACTGT  
 TTGCCCTCATCTCCCCACGAAGCTTCCCCCAAGCCTCCAGGTAGCCAGTGGAGAGAGCATGGTGTCTGC  
 ATTGCCGGGCACTGGCCGAACCCGAACCCGAGATCTACTGGGTCACTCCAGCTGGGCTTCGACTGACACC  
 TGCCCATGCAGGCAGGAGGTACCGGGTGTACCCCGAGGGGACCCTGGAGCTGCGGAGGGTACAGCAGAA  
 GAGGCGGGGCTATACACCTGTGTGGCCAGAACCTGGTGGGGCTGACACTAAGACGGTTAGTGTGGTTG  
 TGGGCGGTCTCCTCCAGCCAGGCAGGGACGAAGGACAGGGGCTGGAGCTCCGGGTGCAGGAGACCCA  
 CCCCTATCACATCTGTATCTTGGGTACCCCAACACAGTGTCCACCAACCTCACCTGGTCCAGT  
 GCCTCCTCCTCCGGGGCAGGGGGCCACAGCTTGGCCCGCTGCCTCGGGGAACCCACAGCTACAACA  
 TTACCCGCTCCTCAGGCCACGGAGTACTGGGCTGCCTGCAAGTGGCCTTTGCTGATGCCACACCCA  
 GTTGGCTTGTGTATGGCCAGGACCAAGAGGGCACTTCTTGCCACAGAGCCTTAGGGGACCGTCCCTGGG  
 CTCATTGCCATCCTGGCTCTCGCTGTCTTCTCCTGGCAGCTGGGCTAGCGGCCACCTTGGCACAGGCC  
 AACCCAGGAAGGGTGTGGGTGGGAGGGCCCTCTCCCTCCAGCCTGGGCTTTCTGGGGCTGGAGTCCCC  
 TTCTGTCCGGTGTGTCTGCTCCCTCGTCTGCCCTGGAATCCAGGGAGGAAGCTGCCAGATCCTCA  
 GAAGGGGAGACTGTTGCCACCATTGTCTCAAAATTCT

**ACGCGT**ACGCGGCCGCTCGAG - GFP Tag - GTTTAA

**Protein Sequence:** >RG205493 representing NM\_201630  
 Red=Cloning site Green=Tags(s)

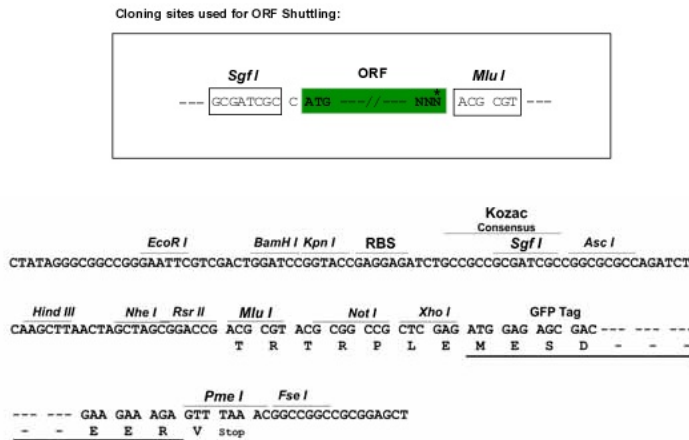
```

MRLLVAPLLLAWVAGATAAVPVVPHVPCPPQCACQIRPWYTPRSSYREATTVDCNDLFLTAVPPALPAG
TQTLQLQSNISIVRVDQSELGYLANL TELDL SQNSFSDARDCDFHALPQLLSLHLEENQL TRLEDHSFAGL
ASLQEL YLNHNQLYRIAPRAF SGLSNLLRLHLNSNLLRAIDSRWFEMLPNLEILMIGGNKVDAILDMNFR
PLANLRSLVLAGMNLREISDYALEGLQSLESLSFYDNQLARVPRRALEQVPGKFLDLNKNPLQRVGPGD
FANMLHLKELGLNNMEELVSIKDFALVNLPELTKLDITNNPRLSF IHPRAFHHL PQMETLMLNNSAL
HQQTAE SPLNLQEVGLHGNI RCDCVIRWANATGTRVRFIEPQSTLCAEPPDLQRLPVREVPFREMTHC
LPLISPRSFPPSLQVASGESMVLHCRALAEPEPEIYWVTPAGLRLTPAHAGRRYRVYPEGTLELRRVTAE
EAGLYTCVAQNLVGADTKTVSVVVG RALLQPGRDEGQGLELRVQETHPHYILL SWVTPPNTVSTNL TWSS
ASSLRGQGATALARLPRGTHSYNITRLLQATEYWACLQVAFADAHTQLACVWARTKEATSCHRALGDRPG
LIATILAVLLLLAAGLAHLGTGQPRKGVGRRPLPPAWAFWGWSPPSVRVVSAPLVLPWNPGRKLPRSS
EGETLLPPLSQNS
  
```

TRTRPLE - GFP Tag - V

**Restriction Sites:** SgfI-MluI

**Cloning Scheme:**



**ACCN:** NM\_201630

**ORF Size:** 2139 bp

**OTI Disclaimer:** The molecular sequence of this clone aligns with the gene accession number as a point of reference only. However, individual transcript sequences of the same gene can differ through naturally occurring variations (e.g. polymorphisms), each with its own valid existence. This clone is substantially in agreement with the reference, but a complete review of all prevailing variants is recommended prior to use. [More info](#)

**OTI Annotation:** This clone was engineered to express the complete ORF with an expression tag. Expression varies depending on the nature of the gene.

**Components:** The ORF clone is ion-exchange column purified and shipped in a 2D barcoded Matrix tube containing 10ug of transfection-ready, dried plasmid DNA (reconstitute with 100 ul of water).

**Reconstitution Method:**

1. Centrifuge at 5,000xg for 5min.
2. Carefully open the tube and add 100ul of sterile water to dissolve the DNA.
3. Close the tube and incubate for 10 minutes at room temperature.
4. Briefly vortex the tube and then do a quick spin (less than 5000xg) to concentrate the liquid at the bottom.
5. Store the suspended plasmid at -20°C. The DNA is stable for at least one year from date of shipping when stored at -20°C.

**RefSeq:** [NM\\_201630.1](#), [NP\\_963924.1](#)

**RefSeq Size:** 3207 bp

**RefSeq ORF:** 2142 bp

**Locus ID:** 10446

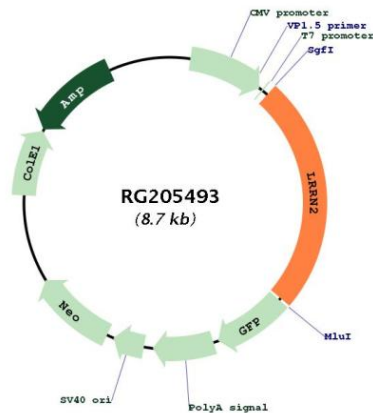
**UniProt ID:** [O75325](#)

**Cytogenetics:** 1q32.1

**Protein Families:** Druggable Genome, Transmembrane

**Gene Summary:** The protein encoded by this gene belongs to the leucine-rich repeat superfamily. This gene was found to be amplified and overexpressed in malignant gliomas. The encoded protein has homology with other proteins that function as cell-adhesion molecules or as signal transduction receptors and is a candidate for the target gene in the 1q32.1 amplicon in malignant gliomas. Two alternatively spliced transcript variants encoding the same protein have been described for this gene. [provided by RefSeq, Jul 2008]

## Product images:



Circular map for RG205493