

Product datasheet for **RG205413**

CAPZA3 (NM_033328) Human Tagged ORF Clone

Product data:

Product Type:	Expression Plasmids
Product Name:	CAPZA3 (NM_033328) Human Tagged ORF Clone
Tag:	TurboGFP
Symbol:	CAPZA3
Synonyms:	CAPPA3; Gsg3; HEL-S-86
Mammalian Cell Selection:	Neomycin
Vector:	pCMV6-AC-GFP (PS100010)
E. coli Selection:	Ampicillin (100 ug/mL)
ORF Nucleotide Sequence:	>RG205413 representing NM_033328 Red=Cloning site Blue=ORF Green=Tags(s)

TTTTGTAATACGACTCACTATAGGGCGGCCGGAATTCGTCGACTGGATCCGGTACCGAGGAGATCTGCC
GCC**CGATCGCC**

ATGACACTTAGCGTGCTGAGCAGGAAGGACAAGGAAAGAGTAATTCGCAGACTGTTATTACAGGCCCTC
CAGGGGAATTTGTAATGCCTTTGATGATCTCTGTCTGCTTATCCGTGATGAAAACTTATGCACCACCA
AGGTGAGTGTGCAGGCCACCAACTGCCAAAAATATTCTGTACCACTCTGCATCGATGGAAATCCAGTA
CTCTTGCTCACCACAATGTAATGGCGACTACCGATTTTTTGACCATCAAAGCAAACCTTTCTTTCAAAT
ATGACCTGCTTCAAATCAGCTGAAAGACATCCAAAGTCATGGTATCATTGAGATGAGGCAGAATACCT
GAGAGTTGTTCTTCTGTGCGCCTTAAAAGTGTATGTGAATGACCACTATCCAAAAGGAAATGCAACATG
CTGAGAAAACTGTCAAAGTAAGGAGTACTTGATAGCTTGCAATTGAAGATCACAACATGAAACAGGAG
AGTGCTGGAACGGACTTTGGAAATCTAAATGGATTTTCCAAGTTAACCCATTTCTAACCCAAGTAACGGG
AAGAATATTTGTGCAAGCTCACTTCTCAGGTGTGCAACCTTCATATTGAAATATCCAAGGACCTGAAA
GAAAGCTTGGAAATAGTTAACCAAGCTCAACTGGCTCTAAGTTTTGCAAGGCTTGTGGAAGCAAGAGA
ACAAATTTCAAGCTGCAGTCTTGGAGAATTACAGGAGTTATCCAATGAAGCCCTGAGAAAAATTCTACG
AAGGGATCTTCCAGTGACCCGCACTCTTATTGACTGGCACAGGATACTCTCTGACTTGAATCTGGTGATG
TATCCTAAATTAGGATATGTCATTTATTCAAGAAGTGTGTTGTGCAACTGGATAATA

ACGCGTACGCGGCCGCTCGAG - GFP Tag - GTTTAA



[View online »](#)

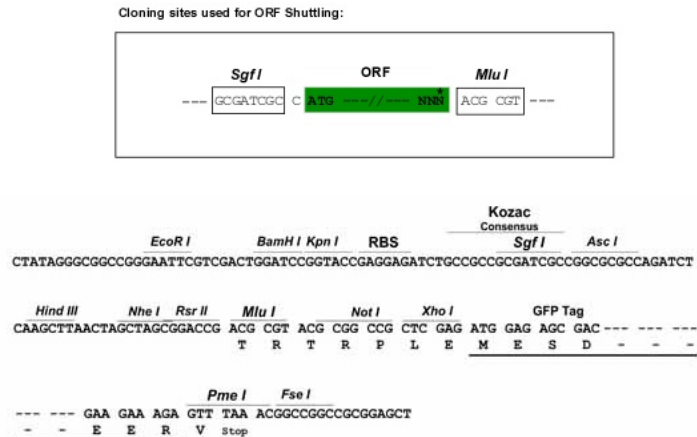
Protein Sequence: >RG205413 representing NM_033328
Red=Cloning site Green=Tags(s)

MTLSVL SRKDKERVIRLLLQAPPGEFVNAFDDLCLLIRDEKLMHHQGE CAGHQHCQKYSVPLCIDGNPV
 LLSHHNVMGDYRFFDHQSKLSFKYDLLQNQLKDIQSHGIIQNEAEYLRVLLCALKLYVNDHYPKGNCNM
 LRKTVKSKEYLIAACIEDHNYETGECWNLWKSKEWIFQVNPFLTQVTGRIFVQAHFFRCVNLHIEISKDLK
 ESLEIVNQAQLALS FARLVEEQENKFQAAVLEELQELSNEALRKILRRDLPVTRTLIDWHRILSDLNLVM
 YPKLGYVIYSRSVLCNWII

TRTRPLE - GFP Tag - V

Restriction Sites: SgfI-MluI

Cloning Scheme:



ACCN: NM_033328

ORF Size: 897 bp

OTI Disclaimer: The molecular sequence of this clone aligns with the gene accession number as a point of reference only. However, individual transcript sequences of the same gene can differ through naturally occurring variations (e.g. polymorphisms), each with its own valid existence. This clone is substantially in agreement with the reference, but a complete review of all prevailing variants is recommended prior to use. [More info](#)

OTI Annotation: This clone was engineered to express the complete ORF with an expression tag. Expression varies depending on the nature of the gene.

Components: The ORF clone is ion-exchange column purified and shipped in a 2D barcoded Matrix tube containing 10ug of transfection-ready, dried plasmid DNA (reconstitute with 100 ul of water).

Reconstitution Method:

1. Centrifuge at 5,000xg for 5min.
2. Carefully open the tube and add 100ul of sterile water to dissolve the DNA.
3. Close the tube and incubate for 10 minutes at room temperature.
4. Briefly vortex the tube and then do a quick spin (less than 5000xg) to concentrate the liquid at the bottom.
5. Store the suspended plasmid at -20°C. The DNA is stable for at least one year from date of shipping when stored at -20°C.

RefSeq: [NM_033328.3](#)

RefSeq Size: 1085 bp

RefSeq ORF: 900 bp

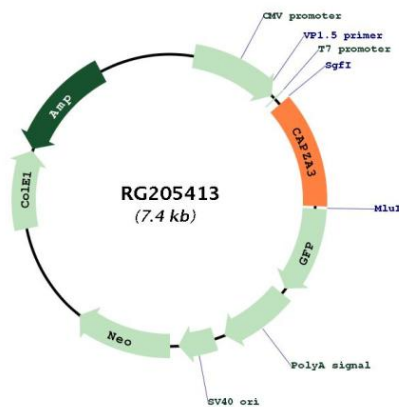
Locus ID: 93661

UniProt ID: [Q96KX2](#)

Cytogenetics: 12p12.3

Gene Summary: This gene encodes an actin capping protein, one of the F-actin capping protein alpha subunit family. The encoded protein is predominantly localized to the neck region of ejaculated sperm, other immunohistochemical signals were found in the tail and postacrosomal regions. The encoded protein may also form heterodimers of alpha and beta subunits. This protein may be important in determining sperm architecture and male fertility. [provided by RefSeq, Jul 2008]

Product images:



Circular map for RG205413