

## Product datasheet for **RG205407**

### **RNF113B (NM\_178861) Human Tagged ORF Clone**

#### Product data:

**Product Type:** Expression Plasmids  
**Product Name:** RNF113B (NM\_178861) Human Tagged ORF Clone  
**Tag:** TurboGFP  
**Symbol:** RNF113B  
**Synonyms:** bA10G5.1; RNF161; ZNF183L1  
**Mammalian Cell Selection:** Neomycin  
**Vector:** pCMV6-AC-GFP (PS100010)  
**E. coli Selection:** Ampicillin (100 ug/mL)  
**ORF Nucleotide Sequence:** >RG205407 representing NM\_178861  
**Red=Cloning site Blue=ORF Green=Tags(s)**

TTTTGTAATACGACTCACTATAGGGCGGCCGGAATTCGTCGACTGGATCCGGTACCGAGGAGATCTGCC  
GCC**CGATCGCC**

ATGGCAGCGCCACCTTCTCCAGGAAGGACGGCCGACCAAGCAGACCAGGTATGCACCTTCTCTTCAAAA  
AGCCTGGACGGAAAGGGGCTGCAGGCCTCAGAAAGCGCCCGCCCTGCGACCCCGAGCACGGAGAGAGCAG  
CAGCAGCGGGGACGAGGGCGACACAGTGGCTCAGCCCCGCGGTGGCACCGAGGCCCGGGCCTCCAC  
AGCTGGCAGAAGGCGGCTCACGGCGACAGGAGGGCGAGGAGCGCGCCTGAGAGCCTCGACGTGGTGT  
ACAGGTCCACCCGCTCGGCGAAGCCTGTGGGGCCGGAGGACATGGGGCCACCGCTGACTTCGAGCAGGA  
CACCGAGAAGGAGCACCATACGCCGACCATCCTCAAGTGCAGCCAGCGGGTCCAGGAGGCACTGCGGGT  
CGGGAGCACGACCACATCTACCGGGGAATCCACAGCTACCTGAGGTACCTGAAGCCAAGGACACGTCCA  
TGGGCAACTCCTCCTCGGGGATGGCGAGGAAGGGCCCATACGTGCGCCAGGGCATCTGCGCGCCACTGT  
GCGCTGGGATTACCAGCCTGACATCTGCAAGGACTACAAGGAGACTGGCTTCTGTGGCTTCGGGGACAGC  
TGCAAATTCCTCCAGCAGCGTTCGATTACAAGCTCGGGTGGGAGATTGAACGGGAGCTTGAAGAGGGTC  
GCTACTGTATCTGCGAGGACGAAAACCATGAAGTGGGAAGCGAGGAAGAGGAAATACCATTACAGGTGTTT  
CATATGTCGCCAGGCCTTCAAAAACCCAGTCGTCACCAAGTGCAGGCATTATTTCTGCGAGAGCTGCGCG  
CTGGAGCACTTCGGGGCACCCCGCGCTGCTACATCTGTGACCAGCAACCGCGGCATTTAACCCCG  
CCAAAGAACTGATGGCGAAACTGCAAAAGCTTCAGGCTGCAGAAGGAAAAAGAGA

**ACGCGT**ACGCGGCCGCTCGAG - GFP Tag - GTTTAA



[View online »](#)

**Protein Sequence:** >RG205407 representing NM\_178861  
Red=Cloning site Green=Tags(s)

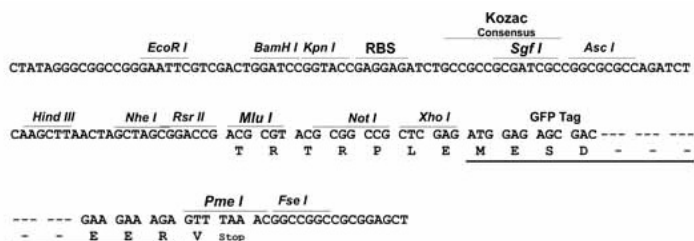
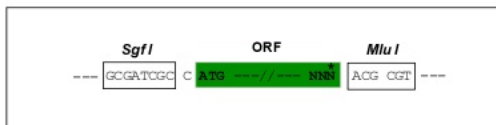
MAAPPSPGRTADQADQVCTFLFKKPGRKGAAGLRKRPACDPEHGESSSSGDEGDTVAQPPRVAPRPRGLH  
 SWQKAAHGDRRGEEAAPESLDVVYRSTRSAKVPGEDMGATADFEQDTEKEHHTPTILKCSQRVQEALRG  
 REHDHIYRGIHSLRYLKPKDTSMGNSSSGMARKGPIRAPGHLRATVWRDYQPDICKDYKETGFCGFGDS  
 CKFLHDRSDYKLGWEIERELEEGRYCICEDENHEVGSSEEEIIPFRFCICRQAFQNPVVTKCRHYFCESCA  
 LEHFRATPRCYICDQPTGGIFNPAKELMAKLQKLQAAEGKKR

TRTRPLE - GFP Tag - V

**Restriction Sites:** SgfI-MluI

**Cloning Scheme:**

Cloning sites used for ORF Shuttling:



**ACCN:** NM\_178861

**ORF Size:** 966 bp

**OTI Disclaimer:** The molecular sequence of this clone aligns with the gene accession number as a point of reference only. However, individual transcript sequences of the same gene can differ through naturally occurring variations (e.g. polymorphisms), each with its own valid existence. This clone is substantially in agreement with the reference, but a complete review of all prevailing variants is recommended prior to use. [More info](#)

**OTI Annotation:** This clone was engineered to express the complete ORF with an expression tag. Expression varies depending on the nature of the gene.

**Components:** The ORF clone is ion-exchange column purified and shipped in a 2D barcoded Matrix tube containing 10ug of transfection-ready, dried plasmid DNA (reconstitute with 100 ul of water).

**Reconstitution Method:**

1. Centrifuge at 5,000xg for 5min.
2. Carefully open the tube and add 100ul of sterile water to dissolve the DNA.
3. Close the tube and incubate for 10 minutes at room temperature.
4. Briefly vortex the tube and then do a quick spin (less than 5000xg) to concentrate the liquid at the bottom.
5. Store the suspended plasmid at -20°C. The DNA is stable for at least one year from date of shipping when stored at -20°C.

**RefSeq:** [NM\\_178861.3](#)

**RefSeq Size:** 1381 bp

**RefSeq ORF:** 969 bp

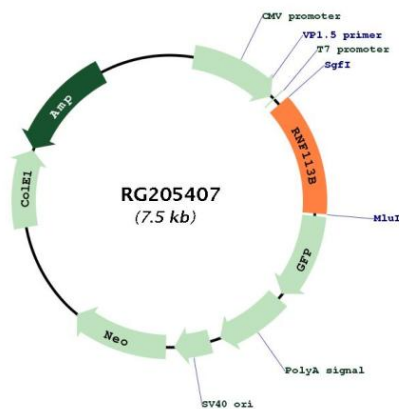
**Locus ID:** 140432

**UniProt ID:** [Q8IZP6](#)

**Cytogenetics:** 13q32.2

**Protein Families:** Druggable Genome

**Product images:**



Circular map for RG205407