

Product datasheet for **RG205397**

ANKRD5 (ANKEF1) (NM_198798) Human Tagged ORF Clone

Product data:

Product Type:	Expression Plasmids
Product Name:	ANKRD5 (ANKEF1) (NM_198798) Human Tagged ORF Clone
Tag:	TurboGFP
Symbol:	ANKEF1
Synonyms:	ANKRD5
Mammalian Cell Selection:	Neomycin
Vector:	pCMV6-AC-GFP (PS100010)
E. coli Selection:	Ampicillin (100 ug/mL)



[View online »](#)

**ORF Nucleotide
Sequence:**

>RG205397 representing NM_198798
 Red=Cloning site Blue=ORF Green=Tags(s)

TTTTGTAATACGACTCACTATAGGGCGGCCGGGAATTCGTCGACTGGATCCGGTACCGAGGAGATCTGCC
 GCC**CGGATCGCC**

ATGGCTTTAGCAGATAAGGGACTTGAGAACTTACAGATCTACAAAGTTCTCAATGTGTGCGGAACAAAG
 ACAAGAAGCAGATAGAGAAGCTGACCAAGCTTGGATACCCTGAAC TAATCAATTATACAGAACCCATTAA
 TGGGCTTAGTGCTTTGCACTTAGCCTCAGTTTCCAATGATATTGATATGGTCAGCTTTCTCCTTGACCTT
 GGTGCTCACCTGATGTGCAAGACCGAATGGGCTGTACTCCACAATGAGGGCTGCAGAAGTGGCCATG
 AATTGTCAATGGAATATTAGCAAAGGCAAGGCTGATATGACTATAGTTGATAATGAAGAAAAGGTGT
 TTTGTTTTACTGCATTTTACCGACTAAGCGCATTATCGCTGTGCTCTGATCGCCCTTGAACATGGTGCA
 GATGTCAACAATTCTACCTATGAAGGAAAGCCAATATTCCTTAGAGCTTGTGAAGATGCACATGATGTTA
 AAGATGTGTGCCTGACATTTTTGGAAAAAGGAGCCAATCCTAATGCAATCAACTCATCCACAGGCCGCAC
 AGCTTTAATGGAAGCGTCAAGAGAAGGGTGTAGTGAAATAGTTCGAGGCATATTGAAAGAGGAGGTGAA
 GTGAATGCATTTGACAACGACAGGCATCAGCTGCTCATTTTGCTGCTAAAGGAGCTTTTTCGATATAT
 TGAAGTCTTTTTGCCTACAATGGAGACGTGGGGCTGATTTGATAAATGGGAACACACCACTTCATTA
 TGCTGCCATGGTGGTTTTGCAGACTGCTGTAATATATAGCTCAGCGAGGATGTGACCTGAAATGGAAG
 AATTTAGATCATAAAACGCCAGGGCTGTGGCTAAGGAAGCGGCTTCAAAGCAGCAAGCAAAGAAATAC
 GCCGAGCAGAGAGAATCGCTAATAAACTAGCCAGGCCAGGAGCCAAAAATCCAAATCCACTGTGGCCCT
 TAGACTGCACGATTGGTCCGTAGAAGCTGAGGCTTTCTCCGGGAAGCCTTTGCGGTTTTAGACAGGGGT
 GATGGAAGCATCAGCAAGAACGACTTCGTGATGGTGTGGAGGAAAGGCAGGATTATGCAAGCTCAGAAC
 AGCTGGCTGCCATCGCTCACCTTCATGAGAAAACCCGGGAGGAGGGGTCAATATTAATGAATTTTAA
 AGGAACAGATATTTAAACAAGTCTTTTGTCTTAGGATCGTATGGACCTAAGAAAAAGGAAAAAGGGATG
 GGCAAAAAAGGAAAGAAAGGAAATTTGTCTTACCCCTTCCAATCTGTGTCATTCTGAGTACGCGTTTT
 CACGCCGCGAGGATGGTGGGCCACCGTATTACATGATTGAGACCTACAAGAATGCACTGATAGCAGCCG
 GTTTAATAGAGATCATCCCCAGAACATCCCATCAGGATGACTCTGTTGGTACATTGATGATTCAGAG
 AAGGTATTTCAAACATTAATATTATCACCAAAGCAGGGGATCTGGCTTCTGAAAAAGGCCTTTGAAT
 CAGGAATACCTGTGGATATGAAGGATAATTATTACAAAACCTCCGCTAATGACGGCGTGTGCAAGTGGAAA
 CATAGATGTGGTCAAGTTTCTTCTGAAAAAGGAGCTAACGTTAATGCAACAGATAACTTTCTGTGGACT
 CCCTTCAATTTGATGCCATGCAGGCCAACAGACATTGTTGAGCTTCTGTTGATCTGGAGCTTTAA
 TAGATGCAGCTTCAATCAACAACCTCACTCCTTTAAATAGAGCCATTGAAAGCTGCAGACTGGATACAGT
 AAAATACCTACTTGATATTGGTGCTAAATTCAGCTGGAAAAATAGAAAAGGCATAGTGCCATGGACGTT
 GCAAAGGCATATGCTGATTATAGAATAATTGATCTGATTAAGAAAAAGCTAGATAACTTGCCGAAACCAG
 CAGAAAAACAAAACCTAAAAGGCAAGACACCTCTATACTGAAGACTGAAGGCCCTGAAATTAAGAAAGA
 AGAGGAACTGCTGTCATCAATTTATGGTGTACCAACCACATCAGAGGGAAAGAAAGTACAGAAGGGTAAT
 GTGGTTCATCTGAATTCATTGATTACCAGTGGTTATACTAAGAAAGTGGATATCACATTTATCCACGGA
 GGATTTGGAGTCTGAAGCCACAACAGCAGAGCTGATCAGGAAGAGGGAACACGGCGAGAGAGGTTTAC
 ACATGAGGTGGACTTCGACGATTTTATGATGCCTTTTTCAGAAGAACATCACAGAGAAAGCTCGAGCACTG
 GAAGCTGCCTGAAGACC

AGCGGACCGACGCGTACGCGGCCGCTCGAG - GFP Tag - GTTTAA

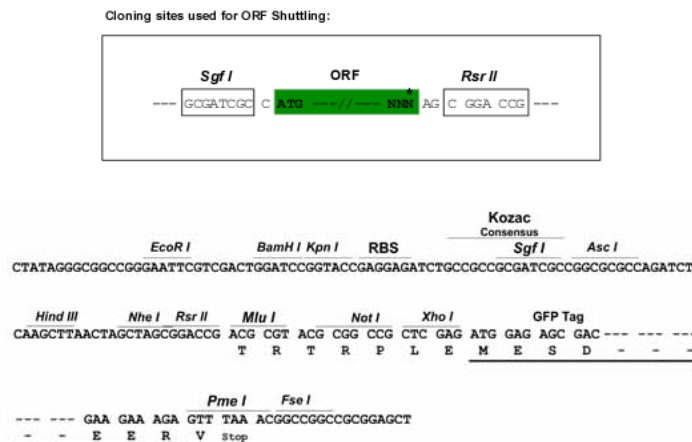
Protein Sequence: >RG205397 representing NM_198798
 Red=Cloning site Green=Tags(s)

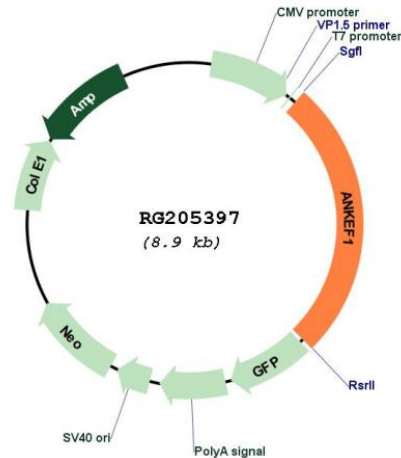
MALADKLENLQIYKVLQCVRNKDKKQIEKLTKLGYPEL INYTEP INGLSALHLASVSNIDMVSFLLDL
 GAHPDVQDRMGCTPTMRAAELGHEL SMEILAKAKADMTIVDNEGKGVLFYCILPTKRHYRCALIALEHGA
 DVNNSTYEGKPIFLRACEDAHDVKDVCLTFLEKGANPAINSSSTGRALMEASREGVVEIVRGILERGGE
 VNAFDNDRHHAHFAAKGGFFDILKLLFAYNGDVGLISINGNTPLHYAAMGGFADCKKYIAQRGCDLKWK
 NLDHKTPRAVAKEGGFKAASKEIRRAERIANKLARPGAKNPPLWALRLHDWSVEREAFLEAFVLDRG
 DGSISKND FVMVLEERQDYASSEQLAAIAHLHEKTRGGGVNINEFFK GTRYLNKSFVLGSYGPKKKEKGM
 GKKGKKGK FVLPICVPEYAFPRRQDGGPPYMIETYKNVTDSSRFNRDHPPEHPIQDDSVWYIDDSE
 KVF SNINIITKAGDLASLKAFESGIPVMDKDYKTPMLTACASGNIDVVKFLEKGANVNATDNFLWT
 PLHFACHAGQQDIVELLVESGALIDAASINNSTPLNRAIESCRLDVKYLLDIGAKFQLENRKGHSAMDV
 AKAYADYRIIDLIKEKLDNLPKPAENQKLKGTTPILKTEGPEIKKEEELLSSIVGPTTSEGKKVQKGN
 VVHLNSLITSGYTKKVDITFIPRRIWSPEATTAELIRKRELRERF THEVDFDDFMPFQKNITEKARAL
 EAALKT

SGPTRRRLE - GFP Tag - V

Restriction Sites: SgfI-RsrII

Cloning Scheme:



Plasmid Map:


ACCN: NM_198798

ORF Size: 2328 bp

OTI Disclaimer: The molecular sequence of this clone aligns with the gene accession number as a point of reference only. However, individual transcript sequences of the same gene can differ through naturally occurring variations (e.g. polymorphisms), each with its own valid existence. This clone is substantially in agreement with the reference, but a complete review of all prevailing variants is recommended prior to use. [More info](#)

OTI Annotation: This clone was engineered to express the complete ORF with an expression tag. Expression varies depending on the nature of the gene.

Components: The ORF clone is ion-exchange column purified and shipped in a 2D barcoded Matrix tube containing 10ug of transfection-ready, dried plasmid DNA (reconstitute with 100 ul of water).

Reconstitution Method:

1. Centrifuge at 5,000xg for 5min.
2. Carefully open the tube and add 100ul of sterile water to dissolve the DNA.
3. Close the tube and incubate for 10 minutes at room temperature.
4. Briefly vortex the tube and then do a quick spin (less than 5000xg) to concentrate the liquid at the bottom.
5. Store the suspended plasmid at -20°C. The DNA is stable for at least one year from date of shipping when stored at -20°C.

RefSeq: [NM_198798.1](#), [NP_942093.1](#)

RefSeq Size: 3775 bp

RefSeq ORF: 2331 bp

Locus ID: 63926

UniProt ID: [Q9NU02](#)

Cytogenetics: 20p12.2