

## Product datasheet for **RG205385**

### Endothelin A Receptor (EDNRA) (NM\_001957) Human Tagged ORF Clone

#### Product data:

Product Type:	Expression Plasmids
Product Name:	Endothelin A Receptor (EDNRA) (NM_001957) Human Tagged ORF Clone
Tag:	TurboGFP
Symbol:	Endothelin A Receptor
Synonyms:	ET-A; ETA; ETA-R; ETAR; ETRA; hET-AR; MFDA
Mammalian Cell Selection:	Neomycin
Vector:	pCMV6-AC-GFP (PS100010)
E. coli Selection:	Ampicillin (100 ug/mL)
ORF Nucleotide Sequence:	>RG205385 representing NM_001957 Red=Cloning site Blue=ORF Green=Tags(s)

TTTTGTAATACGACTCACTATAGGGCGGCCGGAATTCGTCGACTGGATCCGGTACCGAGGAGATCTGCC  
GCC**CGATCGCC**

ATGGAACCCCTTTCCTCAGGGCATCCTTTGGCTGGCACTGGTTGGATGTGTAATCAGTGATAATCCTG  
AGAGATACAGCACAAATCTAAGCAATCATGTGGATGATTCACCACCTTTTCGTGGCACAGAGCTCAGCTT  
CCTGGTTACCACTCATCAACCCACTAATTTGGTCTACCCAGCAATGGCTCAATGCACAACCTATTGCCCA  
CAGCAGACTAAAATTACTTCAGCTTTCAAATACATTAACACTGTGATATCTTGTACTATTTTCATCGTGG  
GAATGGTGGGGAATGCAACTCTGCTCAGGATCATTACCAGAACAAATGTATGAGGAATGGCCACAACGC  
GCTGATAGCCAGTCTTGCCCTTGAGACCTTATCTATGTGGTCATTGATCTCCCTATCAATGTATTTAAG  
CTGCTGGCTGGGCGCTGGCCTTTTGATCACAATGACTTTGGCGTATTTCTTTGCAAGCTGTTCCCTTTT  
TGCAGAAGTCTCGGTGGGGATCACCGTCTCAACCTCTGCGCTCTTAGTGTGACAGGTACAGAGCAGT  
TGCCCTCTGGAGTCGTGTTCAAGGAATTGGGATTCCTTTGGTAACTGCCATTGAAATTGTCTCCACTCTGG  
ATCCTGTCGTTTATCCTGGCCATTCCTGAAGCGATTGGCTTCGTCATGGTACCCTTTGAATATAGGGGTG  
AACAGCATAAAACCTGTATGCTCAATGCCACATCAAAATTCATGGAGTTCTACCAAGATGTAAGGACTG  
GTGGCTCTCGGGTTCTATTTCTGTATGCCCTTGGTGTGCACTGCGATCTTCTACACCCTCATGACTTGT  
GAGATGTTGAACAGAAGGAATGGCAGCTTGAGAATTGCCCTCAGTGAACATCTTAAGCAGGCTCGAGAAG  
TGGCAAAAACAGTTTTCTGCTTGGTTGTAATTTTGTCTTTGCTGTTCCCTGTTCAATTAAGCGGTAT  
ATTGAAGAAAACCTGTGTATAACGAGATGGACAAGAACCGATGTGAATTACTTAGTTTCTTACTGCTCATG  
GATTACATCGGTATTAACCTGGCAACCATGAATTCATGTATAAACCCCATAGCTCTGTATTTTGTGAGCA  
AGAAATTTAAAAATTGTTCCAGTCATGCCTCTGCTGCTGTTACCAGTCCAAAAGTCTGATGACCTC  
GGTCCCATGAACGGAACAAGCATCCAGTGAAGGACCACGATCAAAAACAACCACAACACAGACCGGAGC  
AGCCATAAGGACAGCATGAAC

**ACGCGT**ACGCGGCCGCTCGAG - GFP Tag - GTTTAA



[View online >](#)

**Protein Sequence:** >RG205385 representing NM\_001957  
Red=Cloning site Green=Tags(s)

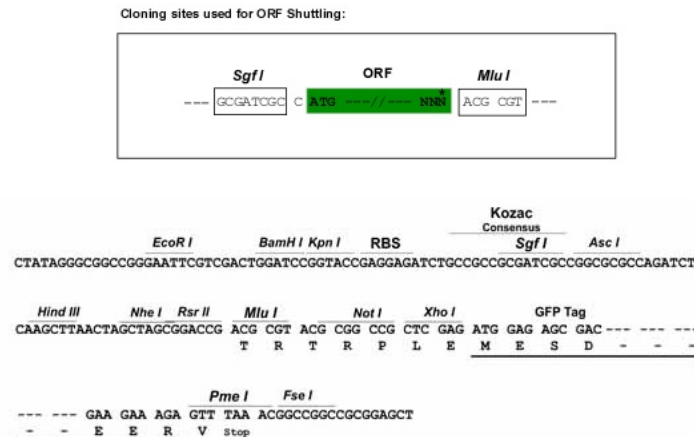
METLCLRASFWLALVGCVISDNPERYSTNLSNHVDDFTFRGTELSFLVTTHQPTNLVLPSNGSMHNYCP  
 QQTKITSAFKYINTVISCTIFIVGMVGNATLLRIYQNKCMRNGHNALIASLALGDLIYVVIDLPINVFK  
 LLAGRWPFHDHDFGVFLCKLFPFLQKSSVGITVLNLCSVDYRAVASWSRVQIGIPLVTAIEIVSIW  
 ILSFILAIPEAIGFVMVPFEYRGEQHKTCMLNATSKFMEFYQDVKDWWLFGFYFCMPLVCTAIFYTLMTC  
 EMLNRRNGSLRIALSEHLKQRREVAKTVFCLVVI FALCWFPVHLSRILKKTVYNEMDKNRCELLSFLLLM  
 DYIGINLATMNSCINPIALYFVSKKFKNCFQSCLECCCYQSKSLMTSVPMMNGTSIQWKDHDQNNHNTDRS  
 SHKDSMN

TRTRPLE – GFP Tag – V

**Restriction Sites:**

SgfI-MluI

**Cloning Scheme:**



**ACCN:** NM\_001957

**ORF Size:** 1281 bp

**OTI Disclaimer:** The molecular sequence of this clone aligns with the gene accession number as a point of reference only. However, individual transcript sequences of the same gene can differ through naturally occurring variations (e.g. polymorphisms), each with its own valid existence. This clone is substantially in agreement with the reference, but a complete review of all prevailing variants is recommended prior to use. [More info](#)

**OTI Annotation:** This clone was engineered to express the complete ORF with an expression tag. Expression varies depending on the nature of the gene.

**Components:** The ORF clone is ion-exchange column purified and shipped in a 2D barcoded Matrix tube containing 10ug of transfection-ready, dried plasmid DNA (reconstitute with 100 ul of water).

**Reconstitution Method:**

1. Centrifuge at 5,000xg for 5min.
2. Carefully open the tube and add 100ul of sterile water to dissolve the DNA.
3. Close the tube and incubate for 10 minutes at room temperature.
4. Briefly vortex the tube and then do a quick spin (less than 5000xg) to concentrate the liquid at the bottom.
5. Store the suspended plasmid at -20°C. The DNA is stable for at least one year from date of shipping when stored at -20°C.

**RefSeq:** [NM\\_001957.1](#), [NP\\_001948.1](#)

**RefSeq Size:** 4105 bp

**RefSeq ORF:** 1284 bp

**Locus ID:** 1909

**UniProt ID:** [P25101](#)

**Cytogenetics:** 4q31.22-q31.23

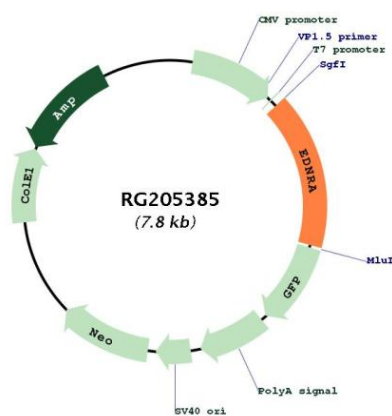
**Domains:** 7tm\_1

**Protein Families:** Druggable Genome, GPCR, Transmembrane

**Protein Pathways:** Calcium signaling pathway, Neuroactive ligand-receptor interaction, Vascular smooth muscle contraction

**Gene Summary:** This gene encodes the receptor for endothelin-1, a peptide that plays a role in potent and long-lasting vasoconstriction. This receptor associates with guanine-nucleotide-binding (G) proteins, and this coupling activates a phosphatidylinositol-calcium second messenger system. Polymorphisms in this gene have been linked to migraine headache resistance. Alternative splicing results in multiple transcript variants. [provided by RefSeq, Oct 2009]

### Product images:



Circular map for RG205385