

Product datasheet for **RG205368**

PTPRN2 (NM_130843) Human Tagged ORF Clone

Product data:

Product Type:	Expression Plasmids
Product Name:	PTPRN2 (NM_130843) Human Tagged ORF Clone
Tag:	TurboGFP
Symbol:	PTPRN2
Synonyms:	IA-2beta; IAR; ICAAR; PTPRP; R-PTP-N2
Mammalian Cell Selection:	Neomycin
Vector:	pCMV6-AC-GFP (PS100010)
E. coli Selection:	Ampicillin (100 ug/mL)



[View online »](#)

ORF Nucleotide Sequence:

>RG205368 representing NM_130843
 Red=Cloning site Blue=ORF Green=Tags(s)

TTTTGTAATACGACTCACTATAGGGCGGCCGGAATTCGTCGACTGGATCCGGTACCGAGGAGATCTGCC
 GCC**CGGATCGCC**

ATGGGGCCGCGCTCCCCTGCTGCTGCTACTGCTGCTGCTGCCGCCACGCGTCTGCCTGCCGCC
 CTCGTCGCTCCCCGCGGCCGCGAGCTCCCGGGCGTCTGGGCTGCCTGCTCGAGGAGGCGCTCTGCGG
 AGCGTCCGAGGCCTGTGTGAACGATGGAGTGTTTGAAGGTGCCAGAAGTTCCGGCAATGGACTTTTAC
 CGCTACGAGGTGTGCGCCGTGGCCCTGCAGCGCTGCGCGTGGCGTTGCAGAAGCTTTCCGGCACAGGTT
 TCACGTGGCAGGATGACTATACTCAGTATGTGATGGACCAGAACTTGCAGACCTCCCGAAAACCTACCT
 GAGGCGTCTGAAGCATCCAGCCAGCCAGGCCCTCAAAACACAGCGTTGGCAGCGAGAGGAGGTACAGT
 CGGGAGGGCGGTGCTGCCCTGGCCAACGCCCTCCGACGCCACCTGCCCTTCTGGAGGCCCTGTCCAGG
 CCCCAGCCTCAGACGTGCTGCCAGGACCCATACGGCGCAGGACAGACCCCCGCTGAGGGTGATGACCG
 CTTCTCCGAGAGCATCCTGACCTATGTGGCCACACGTCTGCGCTGACCTACCCTCCCGGGCCCCGACC
 CAGCTCCGCGAGGACCTCCTGCCGCGGACCCTCGGCCAGCTCCAGCCAGATGAGCTCAGCCCTAAGGTGG
 ACAGTGGTGTGGACAGACACCATCTGATGGCGGCCCTCAGTGCCTATGCTGCCAGAGGCCCCAGCTCC
 CCCCAGGGAGGGCAGCCTGGAGCCACAGTACCTTCTGCGTGCACCCTCAAGAATGCCAGGCCCTTGGCTG
 GCACCAGCCGCCCCCAGAAGTGGCCTTACCTCTGGGAGATTCCGAAGACCCCTCTAGCACAGGCGATG
 GAGCACGGATTACACCTCCTGAAGGACCTGCAGAGGACGCCGCTGAGGTGAGGGGCTGAGTGGCCT
 GGAGCTGGACGGCATGGCTGAGCTGATGGCTGGCTGATGCAAGGCGTGGACCATGGAGTAGCTCGAGGC
 AGCCCTGGGAGAGCGGCCCTGGGAGAGTCTGGAGAACAGCGGATGGCCCAAGGCCACCTCCGTGGAG
 ACAGCTTCCAGATGACGGAGTGCAGGACGATGATAGACTTACCAAGAGGTCCATCGTCTGATGATGC
 CACACTCGGGGGCTCCTGCAGGACACGGTCTCGACTTTACCTGGAGCCCTCCCTTTGCAAGGCC
 CTCGACATGGAGAGGAAGAAGTCCGAGCACCTGAGTCTTCCCTGTCTTCAAGAAGGAGACTGCCGGAG
 TGGAGAACGTCAAGAGCCAGACGTATTCAAAAGATCTGCTGGGGCAGCAGCCGATTTCGAGCCCGGGG
 CGCTGCGTTTGGGGAGCTCCAAAACAGATGCCTGGGCCCTCGAAGGAGGAGCAGAGCCTTCCAGCGGGT
 GCTCAGGAGGCCCTCAGCGACGGCTGCAATTGGAGGTCCAGCCTTCCGAGGAAGAGGCGCGGGGTACA
 TCGTGACAGACAGAGAGGTTCTCGGACCAGCAGTACCTTCAAAGTGAAGCCCAATGTCCAAAACGTGAC
 CACTGAGGATGTGGAGAAGGCCACAGTTGACAACAAGACAACTGGAGGAAACCTTGGACTGAAAATT
 CTTCAAACCGGAGTCGGGTGAAAAGCAAACCTCAAGTTCTGCTCCTCAGGCGGAGCAAGAAGACTCCA
 CCAAGTTCATCGCGCTCACCTGGTCTCCTCGCCTGCATCCTGGGCGTCTCCTGGCCTCTGGCCTCAT
 CTAAGTCTCCGCCATAGCTCTCAGCACAGGCTGAAGGAGAAGCTCTCGGGACTAGGGGGCGACCCAGGT
 GCAGATGCCACTGCCCTACCAGGAGCTGTGCCGCCAGCGTATGGCCACGCGGCCACCAGACCGACCTG
 AGGGCCCCGACACGTCACGCATCAGCAGCGTCTCATCCAGTTACAGCGACGGGCCGATCCCAGCCCTC
 CGCACGCAGCAGCGCTCATCCTGGTCCGAGGAGCCTGTGCACTCAACATGGACATCTCAACCGGCCAC
 ATGATCCTGTCTACATGGAGGACCACCTGAAGAACAAGAACCGGCTGGAGAAGGAGTGGGAAGCGCTGT
 GCGCCTACCAGGCGGAGCCCAACAGCTCGTTCTGGGCCAGAGGGAGGAGAACGTGCCCAAGAACCGCTC
 CCTGGCTGTGACTATGACCACTCCCGGGTCTGCTGAAGGCGGAGAACGCCACAGCCACTCAGAC
 TACATCAACGCTAGCCCTATCATGGATCACGACCCGAGGAACCCCGCTACATCGCCACCCAGGGACCGC
 TGCCCGCCACCGTGGCTGACTTTTGGCAGATGGTGTGGGAGAGCGGCTGCGTGGTGTGATCGTATGCTGAC
 ACCCTCGCGGAGAACGGCGTCCGGCAGTGTACCACTACTGGCCGATGAAGGCTCCAATCTCTACCAC
 ATCTATGAGGTGAACCTGGTCTCCGAGCACATCTGGTGTGAGGACTTCTGGTGGAGGACTTCTATCTGA
 AGAACCTGCAGACCAACGAGACGCGCACCGTGACGAGTCCACTTCTGAGTTGGTATGACCGAGGAGT
 CCCTTCTCCTCAAGTCCCTCTGGACTTCCGCAGAAAAGTAAACAAGTGTACAGGGGCCGTTCTTGT
 CCAATAATTGTCATTGACGTGACGGTGCAGGCCGAGCGGCACCTACGTCCTGATCGACATGGTTCTCA
 ACAAGATGGCCAAAGGTGCTAAAGAGATTGATATCGCAGCGACCTGGAGCACTTGAAGGACAGAGACC
 CGGCATGGTCCAGACGAAGGAGCAGTTTGAAGTTCGCGCTGACAGCGGTGGCTGAGGAGGTGAACGCCATC
 CTAAGGCCCTTCCCCAG

AG**CGGACCG**ACGCGTACGCGGCCGCTCGAG - GFP Tag - GTTTAA

Protein Sequence: >RG205368 representing NM_130843
Red=Cloning site Green=Tags(s)

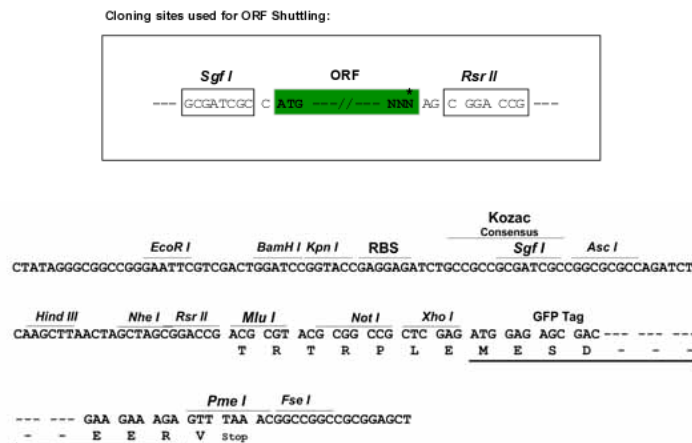
MGPPLPLLLLLLLLLPPRVLPAAPSSVPRGRQLPGRLGCLLEGLCGASEACVNDGVFGRQCQKVPAMDFY
 RYEVSPVALQRLRVALQKLSGTGFTWQDDYTQYVMDQELADLPKTYLRRPEASSPARPSKHSVGSERRYS
 REGGAALANALRRHLPFLEALSQAPASDVLARTHTAQRPPAEGDDRFSESILTYVAHTSALTYPPGPRT
 QLREDLLPRTLQQLQDELSPKVD SGVDRHHLMAAL SAYAAQRPPAPPGEGLSELPQYLLRAPS RMPRPLL
 APAAPQKWPSPLGSEDPSSTGDGARIHTLLKDLQRQPAEVRGLSGL ELDGMAELMAGLMQGV DHGVARG
 SPGRAALGESGEQADGPKATLRGDSFPDDGVQDDDDRL YQEVHRLSATLGGLLQDHGSRLLP GALPFARP
 LDMERKKSEHPSSL SSEEETAGVENVKSQTYSKDLLGQQPHSEPGAAAFGELQNQMPGSPKEEQSLPAG
 AQEALSDGLQLEVQPSEEEARGYIVTDREVLGPAVTFKVSANVQNVTTEDVEKATVDNKDKLEETSGLKI
 LQTGVGSKSKLKFLLPQAEQEDSTKFI AL TLVSLACILGVLLASGLIYCLRHSSQHRLEKLSGLGGDPG
 ADATAAYQELCRQRMATRPDRPEGPHTSRISVSSQFSDGPIPSARSASSWSEEPVQSNMDISTGH
 MILSYMEDHLKKNRLEKEWEALCAYQAEPNSSFVAQREENVPKNRSLAVLTYDHSRVLLKAENSHSHSD
 YINASPIMDHDPNPAYIATQGPLPATVADFWQMVWESGCVVIVMLTPLAENGVRQCYHYWPDEGSNL YH
 IYEVNLVSEHIWCEDFLVRSFYLNKLNQTNETRTVTQFHFLSWYDRGVPSSRSLLDFFRRKVNKCYGRSC
 P.IIVHCSDGAGRSPTYVLIDMVLNKMAGAKEIDIAATLEHLRDQRPGMVQTKEQF EFAL TAVAEVNAI
 LKALPQ

SGPTRRRLE - GFP Tag - V

Restriction Sites:

SgfI-RsrII

Cloning Scheme:

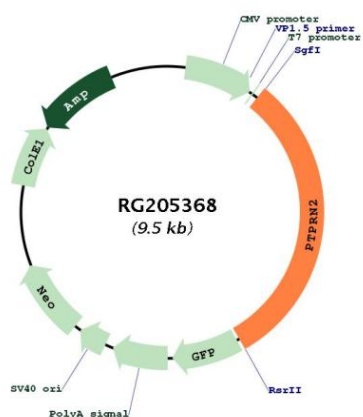


ACCN: NM_130843

ORF Size: 2958 bp

OTI Disclaimer:	The molecular sequence of this clone aligns with the gene accession number as a point of reference only. However, individual transcript sequences of the same gene can differ through naturally occurring variations (e.g. polymorphisms), each with its own valid existence. This clone is substantially in agreement with the reference, but a complete review of all prevailing variants is recommended prior to use. More info
OTI Annotation:	This clone was engineered to express the complete ORF with an expression tag. Expression varies depending on the nature of the gene.
Components:	The ORF clone is ion-exchange column purified and shipped in a 2D barcoded Matrix tube containing 10ug of transfection-ready, dried plasmid DNA (reconstitute with 100 ul of water).
Reconstitution Method:	<ol style="list-style-type: none">1. Centrifuge at 5,000xg for 5min.2. Carefully open the tube and add 100ul of sterile water to dissolve the DNA.3. Close the tube and incubate for 10 minutes at room temperature.4. Briefly vortex the tube and then do a quick spin (less than 5000xg) to concentrate the liquid at the bottom.5. Store the suspended plasmid at -20°C. The DNA is stable for at least one year from date of shipping when stored at -20°C.
RefSeq:	NM_130843.1 , NP_570858.1
RefSeq Size:	4680 bp
RefSeq ORF:	2961 bp
Locus ID:	5799
UniProt ID:	Q92932
Cytogenetics:	7q36.3
Domains:	Y_phosphatase, PTPc_motif
Protein Families:	Druggable Genome, Phosphatase
Protein Pathways:	Type I diabetes mellitus
Gene Summary:	This gene encodes a protein with sequence similarity to receptor-like protein tyrosine phosphatases. However, tyrosine phosphatase activity has not been experimentally validated for this protein. Studies of the rat ortholog suggest that the encoded protein may instead function as a phosphatidylinositol phosphatase with the ability to dephosphorylate phosphatidylinositol 3-phosphate and phosphatidylinositol 4,5-diphosphate, and this function may be involved in the regulation of insulin secretion. This protein has been identified as an autoantigen in insulin-dependent diabetes mellitus. Alternative splicing results in multiple transcript variants. [provided by RefSeq, Feb 2015]

Product images:



Circular map for RG205368