

## Product datasheet for **RG205366**

### **B3GALT2 (NM\_003783) Human Tagged ORF Clone**

#### Product data:

Product Type:	Expression Plasmids
Product Name:	B3GALT2 (NM_003783) Human Tagged ORF Clone
Tag:	TurboGFP
Symbol:	B3GALT2
Synonyms:	beta3Gal-T2; BETA3GALT2; GLCT2
Mammalian Cell Selection:	Neomycin
Vector:	pCMV6-AC-GFP (PS100010)
E. coli Selection:	Ampicillin (100 ug/mL)
ORF Nucleotide Sequence:	>RG205366 representing NM_003783 Red=Cloning site Blue=ORF Green=Tags(s)

TTTTGTAATACGACTCACTATAGGGCGGCCGGAATTCGTCGACTGGATCCGGTACCGAGGAGATCTGCC  
GCC**CGATCGCC**

ATGCTTCAGTGGAGGAGAAGACACTGCTGCTTTGCAAAGATGACCTGGAATGCCAAAAGTCTCTGTTCC  
GCACTCATCTTATTGGAGTACTTCTCTAGTGTTCTTTTTGCTATGTTTTGTTTTCAATCATCATGA  
CTGGCTGCCAGGCAGAGCTGGATTCAAAGAAAACCCTGTGACATACACTTCCGAGGATTCGGTCAACA  
AAAAGTGAGACAAACCACAGCTCCCTTCGGAACATTTGAAAAGAAACAGTCCCTCAAACCCTGAGGCCTC  
AAACAGCAACTAACTCTAATAACACAGACTGTACCACAAGGAGTTACAGGCCTGGAGAATACACTTAG  
TGCCAATGGAAGTATTTACAATGAAAAAGTACTGGACATCCAAATTCCTACCATTTCAAATATATTATT  
AATGAGCCTGAAAAATGCCAAGAGAAAAGTCTTTTTTAATACTACTAATAGCTGCAGAGCCTGGACAAA  
TAGAAGCTAGAAGAGCTATTCGGCAAACCTGGGCAATGAAAAGTCTAGCACCTGGTATTCAAATCACAAG  
AATATTTTTGTTGGGCTTAAGTATTAAGCTAAATGGCTACCTCAACGTGCAATACTGGAAGAAAGCAGA  
CAATATCATGATATAATTCAACAGGAATACTTAGATACGTAATAATTTGACCATTAACACTAATGG  
GCATGAAGTGGGTTGCAACATACTGTCCACATATCCATATGTTATGAAAAGTACAGTGACATGTTTGT  
CAACACTGAATATTTAATCAATAAGTACTGAAGCCAGATCTGCCTCCAGACATAACTATTTCACTGGT  
TACCTAATGCGAGGATATGCACCAATCGAAACAAGATAGCAAGTGGTACATGCCACCAGACCTTACC  
CAAGTGAGCGTTATCCTGTCTTCTGTTCTGGAAGTGGTTATGTTTTTCTGGAGATCTGGCAGAAAAGAT  
TTTTAAAGTTTCTTTAGGTATCCGCCGTTTGCCTTGGAAAGTGTATATGTAGGGATCTGTCTTGCCAAAG  
TTGAGAATTGATCCTGTACCCCTCCCAATGAGTTTGTGTTCAACTCACTGGCGAGTCTCTTATTCGAGCT  
GTAATAACAGCCACCTAATTACCTCTCATCAGTCCAGCCTAGTGAAGTATAAAATACTGGAACCATTT  
ACAACAAAATAAGCAATGCCTGTGCCAACGCAGCAAAGAAAAGGCAGGCAGGTATCGCCACCGTAA  
CTACAT

**ACGCGT**ACGCGGCCGCTCGAG - GFP Tag - GTTTAA



[View online >](#)

**Protein Sequence:** >RG205366 representing NM\_003783  
 Red=Cloning site Green=Tags(s)

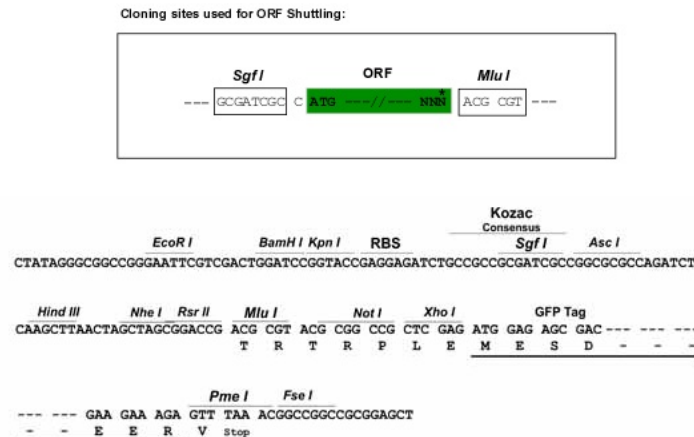
MLQWRRRHCCFAKMTWNAKRSLFRTHLIGVLSLVFLFAMFLFFNHHDWLPGRAGFKENPVTYTFRGFRST  
 KSETNHSSLRNIWKETVPQTLRPQTATNSNNTDLSPQGVTLGENTLSANGSIYNEKGTGHPNSYHFKYII  
 NEPEKCKQEKSPFLILLIAAEPGQIEARRAIRQTWGNESLAPGIQITRIFLLGLSIKLNGLYLRRAILEESR  
 QYHDI IQQEYLDYYNLTIKTLMGMNWWATYCPHIPYVMKTDSDMFVNTEYLINKLLKPDLPPTHNYFTG  
 YLMRGYAPNRNKDSKWYMPDLYPSERYPVFCSGTGYVFSGLAEKIFKVSLGIRRLHLEDVYVVICLAK  
 LRIDPVPPPNEFVFNHWRVSYSSCKYSHLITSHQFQPSSELIKYWNHLQQNKHNACANAAKEKAGRYRHRK  
 LH

TRTRPLE – GFP Tag – V

**Restriction Sites:**

SgfI-MluI

**Cloning Scheme:**



**ACCN:** NM\_003783

**ORF Size:** 1266 bp

**OTI Disclaimer:** The molecular sequence of this clone aligns with the gene accession number as a point of reference only. However, individual transcript sequences of the same gene can differ through naturally occurring variations (e.g. polymorphisms), each with its own valid existence. This clone is substantially in agreement with the reference, but a complete review of all prevailing variants is recommended prior to use. [More info](#)

**OTI Annotation:** This clone was engineered to express the complete ORF with an expression tag. Expression varies depending on the nature of the gene.

**Components:** The ORF clone is ion-exchange column purified and shipped in a 2D barcoded Matrix tube containing 10ug of transfection-ready, dried plasmid DNA (reconstitute with 100 ul of water).

**Reconstitution Method:**

1. Centrifuge at 5,000xg for 5min.
2. Carefully open the tube and add 100ul of sterile water to dissolve the DNA.
3. Close the tube and incubate for 10 minutes at room temperature.
4. Briefly vortex the tube and then do a quick spin (less than 5000xg) to concentrate the liquid at the bottom.
5. Store the suspended plasmid at -20°C. The DNA is stable for at least one year from date of shipping when stored at -20°C.

**RefSeq:** [NM\\_003783.3](#)

**RefSeq Size:** 3215 bp

**RefSeq ORF:** 1269 bp

**Locus ID:** 8707

**UniProt ID:** [O43825](#)

**Cytogenetics:** 1q31.2

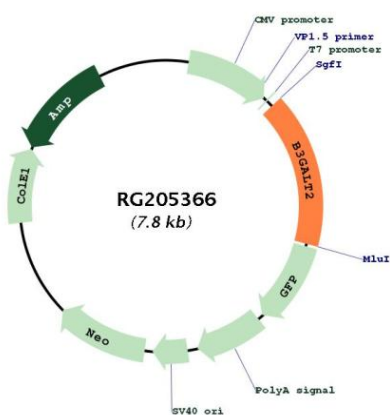
**Domains:** Galactosyl\_T

**Protein Families:** Transmembrane

**Protein Pathways:** Glycosphingolipid biosynthesis - lacto and neolacto series, Metabolic pathways

**Gene Summary:** This gene is a member of the beta-1,3-galactosyltransferase (beta3GalT) gene family. This family encodes type II membrane-bound glycoproteins with diverse enzymatic functions using different donor substrates (UDP-galactose and UDP-N-acetylglucosamine) and different acceptor sugars (N-acetylglucosamine, galactose, N-acetylgalactosamine). The beta3GalT genes are distantly related to the Drosophila Brainiac gene and have the protein coding sequence contained in a single exon. The beta3GalT proteins also contain conserved sequences not found in the beta4GalT or alpha3GalT proteins. The carbohydrate chains synthesized by these enzymes are designated as type 1, whereas beta4GalT enzymes synthesize type 2 carbohydrate chains. The ratio of type 1:type 2 chains changes during embryogenesis. By sequence similarity, the beta3GalT genes fall into at least two groups: beta3GalT4 and 4 other beta3GalT genes (beta3GalT1-3, beta3GalT5). This gene encodes a protein that functions in N-linked glycoprotein glycosylation and shows strict donor substrate specificity for UDP-galactose. [provided by RefSeq, Jul 2008]

Product images:



Circular map for RG205366