

Product datasheet for **RG205363**

SGCE (NM_003919) Human Tagged ORF Clone

Product data:

Product Type:	Expression Plasmids
Product Name:	SGCE (NM_003919) Human Tagged ORF Clone
Tag:	TurboGFP
Symbol:	SGCE
Synonyms:	DYT11; epsilon-SG; ESG
Mammalian Cell Selection:	Neomycin
Vector:	pCMV6-AC-GFP (PS100010)
E. coli Selection:	Ampicillin (100 ug/mL)
ORF Nucleotide Sequence:	>RG205363 representing NM_003919 Red=Cloning site Blue=ORF Green=Tags(s)

TTTTGTAATACGACTCACTATAGGGCGGCCGGAATTCGTCGACTGGATCCGGTACCGAGGAGATCTGCC
GCC**CGATCGCC**

ATGCAATTGCCCCGGTGGTGGGAGCTGGGAGACCCCTGTGCTTGGACGGGACAGGGTCGGGGACACGCA
GGATGAGCCCCGCGACCACTGGCACATTCTTGTGACAGTGTACAGTATTTCTCCAAGGTACACTCCGA
TCGGAGTGTATACCCATCAGCAGGTGCCTCTTTGTTTCATGTTTTGAAAGAGAATATTTAAGGGGAA
TTCCACCTTACCAAAACCTGGCGAGATTAGTAATGATCCATAACATTTAATACAAATTAATGGGTT
ACCCAGACCGACTGGATGGCTTCGATATATCCAAGGACACCATATAGTGATGGAGTCTATATGGGTC
CCCAACAGCTGAAAATGTGGGAAGCCAACAATCATTGAGATAACTGCCTACAACAGGCGCACCTTTGAG
ACTGCAAGGCATAATTTGATAATTAATATAATGTCTGCAGAAGACTTCCCCTTCCATATCAAGCAGAAT
TCTTCATTAAGAAATGAATGTAGAAGAAATGTTGGCCAGTGAGGTTCTTGGAGACTTTCTTGGCGCAGT
GAAAAATGTGTGGCAGCCAGAGCGCCTGAACGCCATAAACATCACATCGGCCCTAGACAGGGGTGGCAGG
GTGCCACTTCCCATAATGACCTGAAGGAGGGCGTTTATGTCATGGTTGGTGCAGATGTCCCCTTTTCTT
CTTGTTTACGAGAAGTTGAAAATCCACAGAATCAATTGAGATGTAGTCAAGAAATGGAGCCTGTAATAAC
ATGTGATAAAAAATTTCTACTCAATTTTACATTGACTGGTGCAAAATTTTATTGGTTGATAAAACAAAG
CAAGTGCCACCTATCAGGAAGTGATTCTGTGGAGAGGGGATTTTACCTGATGGTGGAGAATACAAACCCC
CTTCTGATTCTTTGAAAAGCAGAGACTATTACACGGATTTCTAATTACACTGGCTGTGCCCTCGGCAGT
GGCACTGGTCTTTTTCTAATACTTGCTTATATCATGTGCTGCCGACGGGAAGGCGTGAAAAGAGAAAC
ATGCAACACCAGACATCCAACCTGGTCCATCACAGTGTCTTTCAGAAATCTACCAAGGAGCTTCGAGACA
TGTCCAAGAAATAGAGAGATAGCATGGCCCTGTCAACGCTTCTGTGTTCCACCCTGTGACTGGGAAAT
CATACATCTTTACACACAGACAATGATAGCACAACATGCCATTGATGCAACGCAGCAGAACTTG
CCACATCAGACTCAGATTCACCAACAGCAGACTACAGGTAATGGTATCCC

ACGCGTACGCGGCCGCTCGAG - GFP Tag - GTTTAA



[View online >](#)

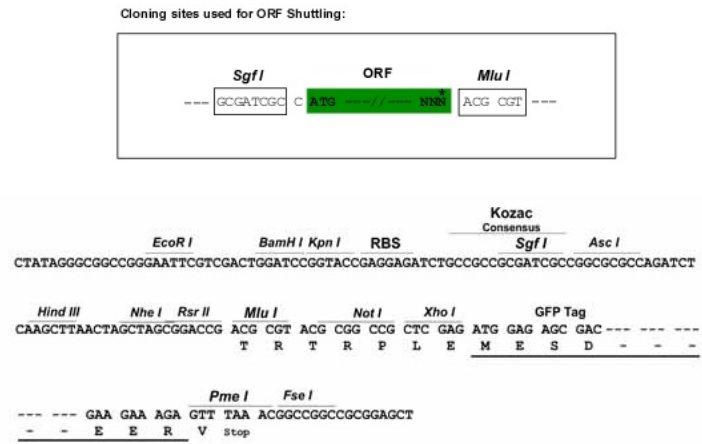
Protein Sequence: >RG205363 representing NM_003919
Red=Cloning site Green=Tags(s)

MQLPRWELGDPCAWTGQGRGTRRMSPATTGTFLLTVYSIFSKVHSDRSVYPSAGVLFVHVLEREYFKGE
 FPPYPKPEISNDPITFNTLMGYPDRPGWLRYIQRTPYSDGVL YGSPTAENVGKPTIIEITAYNRRTFE
 TARHNLIIINIMSAEDFPLPYQAEFFIKNMNVEMLASEVLGDFLGAVKNVWQPERLNAINITSALDRGGR
 VPLPINDLKEGVYVMVGADVPFSSCLREVENPQNQLRCSQEMEPVITCDKKFRTQFYIDWCKISLVDKTK
 QVSTYQEVIRGEGILPDGGEYKPPSDSLKSRDYTDFLITLAVPSAVALVFLILAYIMCCRREGVEKRN
 MQTPDIQLVHHSAIQKSTKELRDM SKNREIAWPLSTLPVFHPVTGEIIHPLHTDNYDSTNMLMQTQQNL
 PHQTQIPQQTTGKWYP

TRTRPLE - GFP Tag - V

Restriction Sites: SgfI-MluI

Cloning Scheme:



ACCN: NM_003919

ORF Size: 1311 bp

OTI Disclaimer: The molecular sequence of this clone aligns with the gene accession number as a point of reference only. However, individual transcript sequences of the same gene can differ through naturally occurring variations (e.g. polymorphisms), each with its own valid existence. This clone is substantially in agreement with the reference, but a complete review of all prevailing variants is recommended prior to use. [More info](#)

OTI Annotation: This clone was engineered to express the complete ORF with an expression tag. Expression varies depending on the nature of the gene.

Components: The ORF clone is ion-exchange column purified and shipped in a 2D barcoded Matrix tube containing 10ug of transfection-ready, dried plasmid DNA (reconstitute with 100 ul of water).

Reconstitution Method:

1. Centrifuge at 5,000xg for 5min.
2. Carefully open the tube and add 100ul of sterile water to dissolve the DNA.
3. Close the tube and incubate for 10 minutes at room temperature.
4. Briefly vortex the tube and then do a quick spin (less than 5000xg) to concentrate the liquid at the bottom.
5. Store the suspended plasmid at -20°C. The DNA is stable for at least one year from date of shipping when stored at -20°C.

RefSeq: [NM_003919.1](#), [NP_003910.1](#)

RefSeq Size: 1658 bp

RefSeq ORF: 1314 bp

Locus ID: 8910

UniProt ID: [O43556](#)

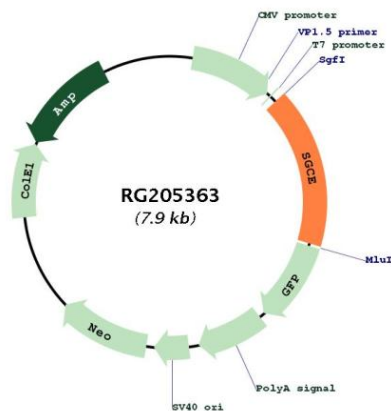
Cytogenetics: 7q21.3

Domains: CADG

Protein Families: Transmembrane

Gene Summary: This gene encodes the epsilon member of the sarcoglycan family. Sarcoglycans are transmembrane proteins that are components of the dystrophin-glycoprotein complex, which link the actin cytoskeleton to the extracellular matrix. Unlike other family members which are predominantly expressed in striated muscle, the epsilon sarcoglycan is more broadly expressed. Mutations in this gene are associated with myoclonus-dystonia syndrome. This gene is imprinted, with preferential expression from the paternal allele. Alternatively spliced transcript variants encoding different isoforms have been found for this gene. A pseudogene associated with this gene is located on chromosome 2. [provided by RefSeq, Oct 2016]

Product images:



Circular map for RG205363