

Product datasheet for **RG205354**

GLE1 (NM_001003722) Human Tagged ORF Clone

Product data:

Product Type:	Expression Plasmids
Product Name:	GLE1 (NM_001003722) Human Tagged ORF Clone
Tag:	TurboGFP
Symbol:	GLE1
Synonyms:	CAAHC; CAAHD; GLE1L; hGLE1; LCCS; LCCS1
Mammalian Cell Selection:	Neomycin
Vector:	pCMV6-AC-GFP (PS100010)
E. coli Selection:	Ampicillin (100 ug/mL)



[View online »](#)

ORF Nucleotide
Sequence:

>RG205354 representing NM_001003722
Red=Cloning site Blue=ORF Green=Tags(s)

TTTTGTAATACGACTCACTATAGGGCGGCCGGAATTCGTCGACTGGATCCGGTACCGAGGAGATCTGCC
GCCGCGATCGCC

ATGCCGCTGAGGGTCGCTGCTGGGAGACCTGAAGGCCCTACGCAGTTCGACAAAGGTCGCCTTTGCT
ACTACCGCGACTGGCTGCTGCGGCGCAGGATGTTTTAGAAGAATGTATGTCTCTCCCAAGCTATCTTC
TTATTCTGGATGGGTGGTAGAGCACGTCTACCCCATATGCAGGAGAACCAACCTCTGTCTGAGACTTCG
CCATCCTCTACGTCACTCAGCTTACGCCCTAGATCAACCCTCATTTGTTCCCAAATCTCCTGACGCAAGCTCTG
CCTTTTCCCAGCCTCCCTGCAACACCAAATGGAACCAAGGCAAGATGAGTCCAGCACACAGAATC
TATGGTACTTCAGTCTCACGGGGATCAAAGTGAAGACTGCGTCCGAATGTACGAACTGGTACACAGA
ATGAAAGAACAGAGGGCCTGAGGCTATGGCAGGAGGAGCAGGAGAGGAAGGTGCAAGCCCTCTCGGAGA
TGGCATCTGAACAACTGAAGCGTTTGATGAATGGAAGGAACTGAAGCAGCATAAAGAATCCAGGACTT
GCGGGAAGTAATGGAGAAGAGCTCCAGAGAAGCCTTGGGACCAAGAGAAGCTAAAAGCTGAGCACCGT
CACAGAGCAAAGATTCTCAACCTGAAGCTGCGGGAAGCAGAGCAGCAGCGCTGAAGCAAGCAGAACAGG
AGCGGCTTCGGAAGGAAGAAGGCCAGATCCGCCTGCGGGCCCTCTATGCTCTGCAGGAGGAGATGTGCA
GCTCAGCCAGCAGCTGGATGCCTCTGAGCAGCACAAAGCCCTGCTTAAGGTCGACCTGGCTGCCTCCAG
ACCCGAGGCAACCAGCTGTGCAGCCTCATCTCAGGGATCATCCGGCCCTCTCAGAGAGCAGCTATCCCA
CAGCAGAGAGTCAAGCTGAGGCTGAGCGAGCTCTGCGGGAATGCGGGACCTCCTGATGAACTGGGGCA
GGAGATCACCAGAGCCTGCGAAGACAAGAGGAGGCAGGATGAAGAAGAGGCCAGGTAAGCTGCAAGAG
GCACAGATGCAGCAGGGACCAGAGGCCCAAAAGAGCCCCAGCTCCCAGCCAGGGCCAGGAGGGAAAC
AGAATGAAGACCTCCAGGTGAAGTACAAGACATTACAATGCAGTGGTACCAGCAGCTGCAGGATGCTTC
CATGCAGTGTGTGTTGACCTTTGAGGGCCTGACCAACAGCAAGGACAGTCAGGCCAAAAAGATAAAGATG
GACCTCCAGAAGGCTGCTACCATCCAGTGAAGCAAACTCTACCATGTCAGGCTCAAACTGAAGGAGA
TCTTTGACAAGATCCACAGCCTGCTCTCTGAAAACTGTTCAATCTGGTGGGCGCTCTGTGTCTGTAC
ACTTAACCCACAGGGGCTGGACTTTGTTCAATACAACTGGCAGAGAAATTTGTAAACAAGGCGAGGAG
GAAGTGGCCTCTCACCATGAAGCAGCATTCCCCATTGCAGTTGTGGCATCCGGGATCTGGGAGCTCCACC
CCAGAGTGGGGACCTATTCTTGCTCATCTACATAAGAAGTGCCTTACTCTGTTCTTTCTATCCAC
TTTCAAGGAGGAATGGCTTTGGAAGACTATCAGAGGATGCTTGGTTACCAAGTAAAGGATCCAAAGT
GAGCAGCAAGACAACCTTTCTAAAACGCATGTCAGGGATGATCCGTCTCTACGCTGCTATCATCCAGCTCC
GGTGGCCATATGGAACCAACAGGAGATTCACCCATGAGCTTAAATCATGGATGGCGCTGGTTGGCACA
GATCTTAAACATGGAGCCCTTGTGAGATGTGACAGCCACCCTCCTCTTTGACTTCTGGAGGTGTGTGGG
AATGCCCTCATGAAGCAATACCAGGTTCAAGTCTGGAAGATGCTAATTCTCATCAAGAGGACTACTTTT
CCAGAATTGAAGCTATCACAAGCTCAGGACAGATGGGCTCCTTACACGCTCAAGCAGTTCTTGGAGAA
ATGTTTGAACACAAGGACATTCCTGTCCCAAGGGCTTTCTGACTTCTCCTTCTGGCGCTCC

ACGCGTACGCGGCCGCTCGAG - GFP Tag - GTTTAA

Protein Sequence: >RG205354 representing NM_001003722
 Red=Cloning site Green=Tags(s)

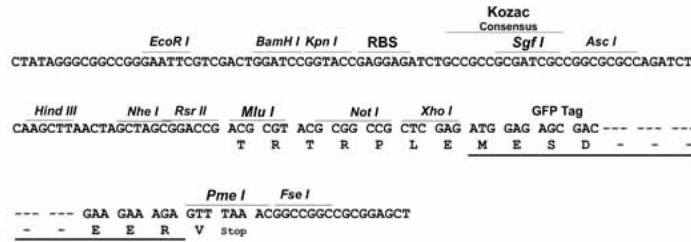
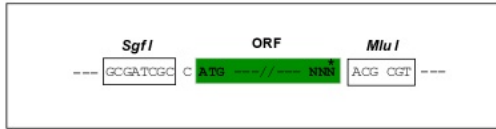
MPSEGRWCWETLKALRSSDKGRCLCYRDWLLRREDVLEECMSLPKLSSYSGWVVEHVLPHMQENQPLSETS
 PSSTSASALDQPSFVPKSPDASSAFSPASPATPNGTKGKDESHQTESMVLQSSRGIKVEDCVRMYELVHR
 MKGTEGLRLWQEEQERKVQALSEMASEQLKRFDEWKELKQHKFQDLREVMEKSSREALGHQEKLKAEHR
 HRAKILNLKLEAEQQRVKQAEQERLRKEEGQIRLRALYALQEMLQLSQQLDASEQHKALLKVDLAAFQ
 TRGNQLCSLISGIIIRASSESSYPTAESQAEAEALREMRDMLMNLGQEI TRACEDKRRQDEEEA QVKLQE
 AQMQQGP EAHKEPPAPSQGGKQNE DLQVKVQDITMQWYQQLQDASMQCVLTFEGLTNSKDSQAKKIKM
 DLQKAATIPVSI STIAGSKLKEIFDKIHSLLSGKPVQSGGRSVSVTLNPGQLDFVQYKLAEFVKQGEE
 EVASHHEAAFP IAVVASGIWELHPRVGD LILAHLHKKCPYSVPFYPTFKEGMALEDYQRMGLGYQVKDSKV
 EQQDNFLKRM SGMIRLYAAIIQLRWPYGNQQE IHPHGLNHGWRWLAQILNMEPLSDV TATLLDFLEVCG
 NALMKQYQVQFWKMLILIKEDYFPRIEAITSSGQMGSFIRLQKFLKCLQHKDIPVPGF LTSSFWRS

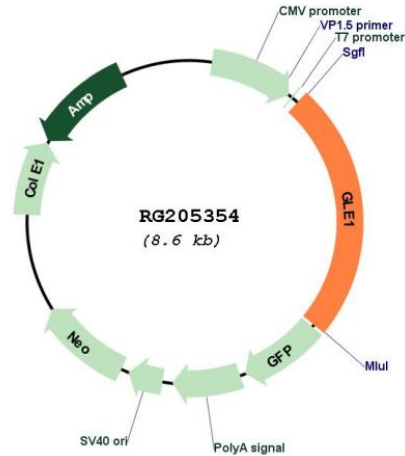
TRTRPLE - GFP Tag - V

Restriction Sites: SgfI-MluI

Cloning Scheme:

Cloning sites used for ORF Shuttling:



Plasmid Map:


ACCN: NM_001003722

ORF Size: 2094 bp

OTI Disclaimer: The molecular sequence of this clone aligns with the gene accession number as a point of reference only. However, individual transcript sequences of the same gene can differ through naturally occurring variations (e.g. polymorphisms), each with its own valid existence. This clone is substantially in agreement with the reference, but a complete review of all prevailing variants is recommended prior to use. [More info](#)

OTI Annotation: This clone was engineered to express the complete ORF with an expression tag. Expression varies depending on the nature of the gene.

Components: The ORF clone is ion-exchange column purified and shipped in a 2D barcoded Matrix tube containing 10ug of transfection-ready, dried plasmid DNA (reconstitute with 100 ul of water).

Reconstitution Method:

1. Centrifuge at 5,000xg for 5min.
2. Carefully open the tube and add 100ul of sterile water to dissolve the DNA.
3. Close the tube and incubate for 10 minutes at room temperature.
4. Briefly vortex the tube and then do a quick spin (less than 5000xg) to concentrate the liquid at the bottom.
5. Store the suspended plasmid at -20°C. The DNA is stable for at least one year from date of shipping when stored at -20°C.

RefSeq: [NM_001003722.1](#), [NP_001003722.1](#)

RefSeq Size: 3350 bp

RefSeq ORF: 2097 bp

Locus ID: 2733

UniProt ID: [Q53GS7](#)

Cytogenetics: 9q34.11

Gene Summary: This gene encodes a predicted 75-kDa polypeptide with high sequence and structure homology to yeast Gle1p, which is nuclear protein with a leucine-rich nuclear export sequence essential for poly(A)+RNA export. Inhibition of human GLE1L by microinjection of antibodies against GLE1L in HeLa cells resulted in inhibition of poly(A)+RNA export. Immunofluorescence studies show that GLE1L is localized at the nuclear pore complexes. This localization suggests that GLE1L may act at a terminal step in the export of mature RNA messages to the cytoplasm. Two alternatively spliced transcript variants encoding different isoforms have been found for this gene. [provided by RefSeq, Jul 2008]