

Product datasheet for **RG205334**

PIGN (NM_176787) Human Tagged ORF Clone

Product data:

Product Type:	Expression Plasmids
Product Name:	PIGN (NM_176787) Human Tagged ORF Clone
Tag:	TurboGFP
Symbol:	PIGN
Synonyms:	MCAHS; MCAHS1; MCD4; MDC4; PIG-N
Mammalian Cell Selection:	Neomycin
Vector:	pCMV6-AC-GFP (PS100010)
E. coli Selection:	Ampicillin (100 ug/mL)



[View online »](#)

ORF Nucleotide Sequence:

>RG205334 representing NM_176787
 Red=Cloning site Blue=ORF Green=Tags(s)

TTTTGTAATACGACTCACTATAGGGCGGCCGGAATTCGTGACTGGATCCGGTACCGAGGAGATCTGCC
 GCC**CGGATCGCC**

ATGCTGCTGTTCTTTACTTTGGGATTGCTTATACATTTTGTGTTCTTCGCCTCCATCTTTGACATTTATT
 TTACATCTCCTTTGGTTCATGGAATGACTCCTCAGTTTACACCATTGCCTCCTCCAGCGAGAAGATTAGT
 GTTGTGTTGTTGCTGATGGCCTTCGAGCAGATGCACTTTACGAATTAGATGAAAATGGAACTCTAGAGCA
 CCGTTTATTAGGAATATCATAATGCATGAAGGCAGCTGGGGCATACTCATAACAGTGTGCCAACAGAAT
 CTCGGCCAGGTGATGTAGCTCTGATAGCTGGGTTTTATGAAGATGTCAGTGCAGTTGCCAAAGGATGGAA
 GGAAAATCCTGTAGAGTTTGATTCTCTTTTTAATGAAAGTAAATACACATGGAGCTGGGGAAGCCCAGAT
 ATCCTGCCTATGTTTGCCAAAGGTGCTAGTGGAGACCAGTTTATACATATAGTTATGATGCTAAAAGAG
 AGGATTTTGGTGTCAAGATGCAACAAAAGTGGATACGTGGGTTTTGATAATGTTAAGGACTTCTTTCA
 TCATGCCAGAAAACACAGTCTTTGTTTTCTAAAATAAATGAAGAGAAAATAGTTTTTTTCTTACATTTA
 TTAGGAATAGATACAAACGGACATGCTCATCGACCATCCTCGAGAGACTACAAGGACAATATTA AAAAG
 TTGATGATGGAGTTAAAGAAATCGTGTCTATGTTTAAACATTTCTATGGAATGATGGGAAAACAACATT
 TATCTTTACCTCTGACCATGGAATGACAGACTGGGGTTCCCATGGGGCTGGTCACTCCTTCAGAGACTTTA
 ACTCCTTTAGTCACTTGGGGAGCTGGAATCAAGTATCCCCAAAGAGTATCAGCTCAGCAATTTGATGATG
 CATTTTGAAGAGTGGAGATTGGAGAATTGGAAGAGGCTAGATGTCAATCAGGCTGATATTGCACCATT
 GATGACTTCCCTTATTGGAGTCCCTTTCTCTTAACTCAGTGGGAATCCTTCTGTGGATTATCTTAAC
 AACACTGATCTCTTCAAAGCAGAGAGCATGTTTACAAATGCAGTACAGATTCTTGAACAGTTCAAGTGA
 AAATGACTCAGAAGAAAGAAAGTTACTTTACCATTTTGTTTACACCATTTAAACTGCTTTTCTGATCCAA
 ACAGTTCAACATTTTAAAGAAAAGCAAGTCTTATATAAAACACAGAAAAGTTTGATGAAGTGGTCTCCCTT
 TGCAAGGAGCTAATTCATCTTGCAATTGAAAGGATTGCTCTATTATCACACATATGACAGATTCTTTTTGG
 GCGTCAATGTTGTTATTGGTTTTGTGGGATGGATATCTTATGCCTCTTTGTTGATCATCAAGTCTCATT
 CAACCTTATAAAAGGTGTTAGTAAAGAAGTGAAGAAACCAAGCCATCTCCTGCCTGTAGTTTTGTAGCT
 ATTGGCATTTTAGTAGCATTTTTCTGCTGATTCAAGCCTGTCCCTGGACATATTATGTATATGGTTTTGT
 TGCCACTGCCAATATGGTATGCGGTTCTAAGAGAATTTCAAGTATTTCAGGACCTGTTGTATCAGTGT
 GACCTATCCTCTGAGCCATTTTGTGGTACCTGTTAGCCTTTACCCTGGGAATTGAAGTATTAGTTCTC
 AGTTTTTTCTACCGCTATATGCTTACCGCTGGACTTACTGCCTTTCAGCTTGGCCATTTCTCACTCGGC
 TGTGGACTCGAGCAAAGATGACCTCACTGAGTTGGACTTCTTCTCTTTGCTCCTGGCAGTGTCCCACT
 GATGCCGTTGTAGGTCGAAAGCCAGACATCTCTAGTGTGGTGCAGGCTTGCTGGTCTTCTGTTA
 TCCTGTGTGTTGTAACATCTCTCATGAAAAGAAAAGTAGCTTTATAAAGGAAGAGCTATTGGTACATC
 TGTTACAGGTGCTGAGCACAGTGTCTCCATGTATGTTGTGATAGCACTCAGAGTAGTCTACTCAGGAA
 GCAAGGACTGCCTCTCATGAATCAAATTATTAGCTGGGCAACATTAGCCTCTTCTTGGTTGTGCCACTA
 CTGAGTTCTCCAGTCTCTTTCCAGGATTGTTCCAGCATACTTCTTTCATTGATGTCAACCTACCTACTTC
 TAAGCACAGGGTATGAAGCTCTCTTTCCACTAGTGTGCTTGTGTTGATGTTGTCTGGATAAACATAGA
 ACAAGAAACTCTACAACAATCTGGTGTGCTGTAACAAAAGTCCACCAGTATCCAGTTCTCTTATAAT
 ACTGATAAAGTCAAGTTTCGACAGCTATATCTGGATGACATCCGTAGGGCCTTTTTCTTGTGTTTTCTCT
 TAGTGACAGCATTTTTGGAAGTGGAAATATAGCTTCTATTAACAGCTTTGATCTTGCTCTGTCTATTG
 CTTTCTGACTGTGTTGAGTCTTTTATGATGGGAGCCCTGATGATGTGGAAGATTTAATCCCTTTGTT
 CTTGTTATGTGTGCTTTTGAAGCAGTTCAGTTGACTACTCAGTTATCGTCAAAAAGCCTTTTTCTCATTG
 TTCTCGTCATATCAGACATTATGGCTTTCAGTTTTTCTTCTTGGTCAAGGATTATGGCAGCTGGCTTGA
 TATTGGGACAAGCATCAGCCACTATGTGATTGTCATGTCCATGACCATCTTTTGGTGTCTCAATGGC
 CTGGCCAGCTGCTCACAACGAAGAAACTCAGACTATGTGGCAAAACCAAAAGTCACTTTCATG

ACGCGTACGCGGCCGCTCGAG - GFP Tag - GTTTAA

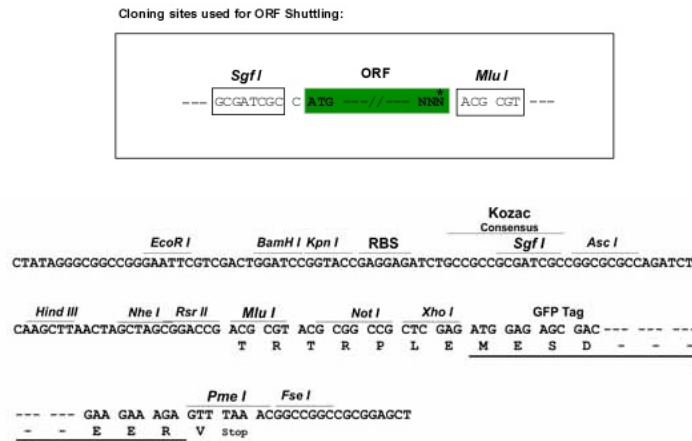
Protein Sequence: >RG205334 representing NM_176787
 Red=Cloning site Green=Tags(s)

MLLFFTLGLLIHFVFFASIFDIYFTSPLVHGMPQFTPLPPPARRLVLFVADGLRADALYELDENGNSRA
 PFIRNIIMHEGSWGISHTRVPTESRPGHVALIAGFYEDVSAVAKGWKENPVEFDSL FNESKYTWSWGSPD
 ILPMFAKAGASGDHVVYTSYDAKREDFGAQDATKLDTWVFDNVKDFHHARNNQSLFSKINEEKIVFFLHL
 LGIDTNGHAHRPSSRDYKDNIIKVDGKVEIVSMFNHFYGNKGKTTFFIFTSDHGMDWGSHGAGHPSETL
 TPLVTWGAGIKYPQRVSAQQFDDAFLKEWRLNWKRLDYNQADIAPLMTSLIGVPFPLNSVGILPVDYLN
 NTDLFKAESMFTNAVQILEQFKVKMTQKKEVTL PFLFTPFKLLSDSKQFNILRKARSYIKHRKFDEVVSL
 CKELIHLALKGLSYYHTYDRFFLGVNVVIGFVGWISYASLLIIKSHSNLIKGSKEVKKPSHLLPCSFVA
 IGILVAFFLLIQACPWTYYVYGLLPLPIWYAVLREFQVIQDLVSVLTYPLSHFVGYLLAFTLGIEVLVL
 SFFYRYMLTAGLTAFAAWPFLTRLWTRAKMTLSWTFSSLLAVFPLMPVVGRKPDISLVMGAGLLVLL
 SLCVVTSLMKRKDSFIKEELLVHLLQVLSTVLSMYVVYSTQSSLLRKQGLPLMNQIISWATLASSLVVPL
 LSSPVLQRLFSILLSLMSTYLLSTGYEALFPLVLSCLMFVWINIEQETLQQSGVCKQKLTSIQFSYN
 TDITQFRQLYLDIRRAFLLVFLLVTAFFGTGNIASINFDLASVYCFLTVFSPFMMGALMMWKILIPFV
 LVMCAFEAVQLTTQLSSKSLFLIVLVISDIMALHFFLVKDYGSWLDIGTISISHYVIVMSMTIFLVFLNG
 LAQLLTTKKLRLCGKPKSHFM

TRTRPLE - GFP Tag - V

Restriction Sites: SgfI-MluI

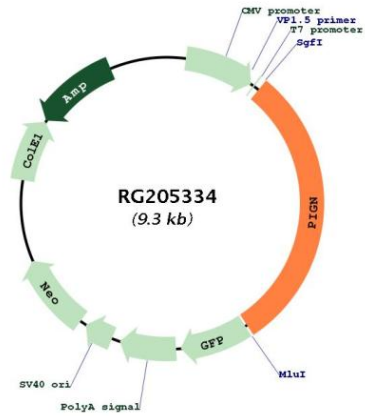
Cloning Scheme:



ACCN: NM_176787

ORF Size:	2793 bp
OTI Disclaimer:	The molecular sequence of this clone aligns with the gene accession number as a point of reference only. However, individual transcript sequences of the same gene can differ through naturally occurring variations (e.g. polymorphisms), each with its own valid existence. This clone is substantially in agreement with the reference, but a complete review of all prevailing variants is recommended prior to use. More info
OTI Annotation:	This clone was engineered to express the complete ORF with an expression tag. Expression varies depending on the nature of the gene.
Components:	The ORF clone is ion-exchange column purified and shipped in a 2D barcoded Matrix tube containing 10ug of transfection-ready, dried plasmid DNA (reconstitute with 100 ul of water).
Reconstitution Method:	<ol style="list-style-type: none">1. Centrifuge at 5,000xg for 5min.2. Carefully open the tube and add 100ul of sterile water to dissolve the DNA.3. Close the tube and incubate for 10 minutes at room temperature.4. Briefly vortex the tube and then do a quick spin (less than 5000xg) to concentrate the liquid at the bottom.5. Store the suspended plasmid at -20°C. The DNA is stable for at least one year from date of shipping when stored at -20°C.
RefSeq:	NM_176787.3 , NP_789744.1
RefSeq Size:	4861 bp
RefSeq ORF:	2796 bp
Locus ID:	23556
UniProt ID:	O95427
Cytogenetics:	18q21.33
Protein Families:	Transmembrane
Protein Pathways:	Glycosylphosphatidylinositol(GPI)-anchor biosynthesis, Metabolic pathways
Gene Summary:	This gene encodes a protein that is involved in glycosylphosphatidylinositol (GPI)-anchor biosynthesis. The GPI-anchor is a glycolipid found on many blood cells and serves to anchor proteins to the cell surface. This protein is expressed in the endoplasmic reticulum and transfers phosphoethanolamine (EtNP) to the first mannose of the GPI anchor. Two alternatively spliced variants, which encode an identical isoform, have been reported. [provided by RefSeq, Jul 2008]

Product images:



Circular map for RG205334