

Product datasheet for **RG205300**

EPS8 (NM_004447) Human Tagged ORF Clone

Product data:

Product Type:	Expression Plasmids
Product Name:	EPS8 (NM_004447) Human Tagged ORF Clone
Tag:	TurboGFP
Symbol:	EPS8
Synonyms:	DFNB102
Mammalian Cell Selection:	Neomycin
Vector:	pCMV6-AC-GFP (PS100010)
E. coli Selection:	Ampicillin (100 ug/mL)



[View online »](#)

**ORF Nucleotide
Sequence:**

>RG205300 representing NM_004447
 Red=Cloning site Blue=ORF Green=Tags(s)

TTTTGTAATACGACTCACTATAGGGCGGCCGGAATTCGTCGACTGGATCCGGTACCGAGGAGATCTGCC
 GCC**CGGATCGCC**

ATGAATGGTCATATTTCTAATCATCCCAGTAGTTTTGGAATGTACCCATCTCAGATGAATGGCTACGGAT
 CATCACCTACCTTTCCAGACGGACAGAGAACATGGTTCAAAAACAAGTGCAAAGGCCCTTTATGAACA
 AAGGAAGAATTATGCACGGGACAGTGTCAGCAGTGTGTACAGATATCTCAATACCGTGTGAACACTTG
 ACTACCTTTGCTCGGATCGAAAGATGCTATGATCACTGTTGATGATGGAATAAGGAAATTGAAATTGC
 TTGATGCCAAGGGCAAAGTGTGGACTCAAGATATGATTCTTCAAGTGGATGACAGAGCTGTGAGCCTGAT
 TGATTTAGAATCAAAGAATGAACTGGAGAATTTTCCTTTAAACACAATCCAGCACTGCCAAGCTGTGATG
 CATTATGCAGCTATGATTCAGTCTTGCCTGGTGTGCAAAGAGCCAACCCAGAACAAGCCAGATCTTC
 ATCTCTCCAGTGTGATGAGGTTAAGGCAAACCTAATTAGTGAAGATATTGAAAGTGAATCAGTGACAG
 TAAAGGAGGGAAACAGAAGAGGGCGCCGACGCCCTGAGGATGATTTCCAATGCAGACCCTAGTATACCG
 CCTCCACCAGAGCTCCTGCCCTGCGCCCTGGGACCGTCACCCAGGTGGATGTTAGAAGTCCAGTGG
 CAGCCTGGTCTGCATGGGCAGCCGACCAAGGGGACTTTGAGAAACCAAGGCAATCATGAGCAGGAAGA
 AACACCTGAGATGATGGCAGCCCGCATTGACAGAGATGTGAAATCTTAAACCACATTTTGGATGACATT
 GAATTTTTTATCACAAAACCTCAAAAAGCAGCAGAAGCATTCTTCTGAGCTTTCTAAAAGGAAGAAAAACA
 AGAAAGGTAAAAGGAAAGGACCAGGAGAGGGTGTTTAACGCTGCGGGCAAAACCTCCACCTCCTGATGA
 ATTTCTTGACTGTTTCAAAAAGTTTAAACACGGATTTAACCTTCTGGCCAAACTGAAGTCTCATATTCAG
 AATCCTAGTGTGCAGATTTGGTTCAGTCTTTTGTACTCCATTAATATGGTGGTGCAGGCAACAGGAG
 GTCCTGAACAGCCAGTTCAGTACTTATCCCTATTGAATAAGGACACAATTGATTTCTTAAATTATAC
 TGTCAATGGTGTGAACGGCAGCTGTGGATGTCATTGGGAGGAACTTGGATGAAAGCCAGAGCAGAGTGG
 CAAAAGAACAGTTTATCCACCATATGTTCCACGATTCCGCAATGGCTGGGAGCCCAATGCTGAACT
 TTATGGGAGCCACAATGGAACAAGATCTTTATCAACTGGCAGAATCTGTGGCAAATGTAGCAGAACATCA
 GCGCAAACAGGAAATAAAAAGATTATCCACAGAGCATTCCAGTGTATCAGAGTATCATCCAGCCGATGGC
 TATGCGTTCAGTAGCAACATTTACACAAGAGGATCCCACCTGGACCAAGGGGAAGCTGCTGTTGCTTTTA
 AGCCAACCTCTAATCGCCATATAGATAGAAATTATGAACCACTCAAAACACAACCAAGAAATATGCCAA
 ATCCAAGTATGACTTTGTAGCAAGGAACAACAGTGAAGTCTCGGTTCTAAAGGATGATATTTTAGAGATA
 CTTGATGATCGGAAGCAATGGTGGAAAGTTCGAAATGCAAGTGGAGACTCTGGATTTGTGCCAAATAACA
 TTTTGGATATTGTGAGACCTCCAGAATCTGGATTGGGGCGTGTGATCCACCTTATACTCATACTATACA
 GAAACAAAGGATGGAGTATGGCCCAAGACCAGCTGATACTCCCCCTGCTCCATCACCTCCTCCAACACCA
 GTTCTGTTCCTGTTCCCTTCCCTTCCCTTCCACTCCAGCACCTGTTCTGTGTCAAAGGTCCAGCAAATA
 TAACACGTCAAAACAGCAGCTCCAGTGACAGTGGTGGCAGTATCGTGGCAGACAGCCAGAGACACAAACA
 ACTTCCGGTGGACCGAAGGAAATCTCAGATGGAGGAAGTGAAGTGAATCATCCACAGACTGACCATT
 GGTCCGAGTGGCGCTCAGAAGAAATTCATGTGCCACGGCAGAACGTGCCAGTTATCAATATCACTTACG
 ACTCCACACCAGAGGATGTGAAGACGTGGTTACAGTCAAAGGGATTCAACCCTGTGACTGCAATAGTCT
 TGGAGTATTAATGGTGCACAACCTTTCTCTCTCAATAAGGATGAAGTGAAGGACAGTCTGCCCTGAAGGG
 GCGAGAGTCTATAGCCAAATCACTGTACAAAAAGCTGCATTGGAGGATAGCAGTGGCAGCTCCGAGTTAC
 AAGAAATTATGAGAAGACGACAGGAAAAATCAGTGTGCCGCTAGTGATTTCAGGAGTGGAAATCTTTTGA
 TGAAGGAAGCAGTCAC

ACGGTACGCGGCCGCTCGAG – GFP Tag – GTTTAA

Protein Sequence: >RG205300 representing NM_004447
 Red=Cloning site Green=Tags(s)

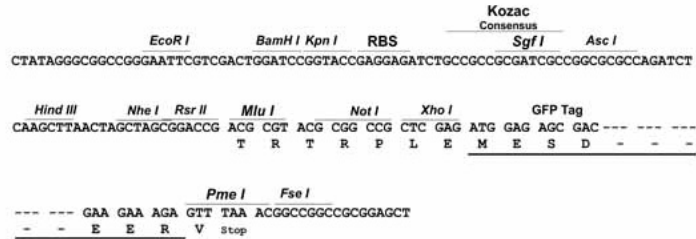
```
MNGHISNHPSSFGMYP SQMNGYGSSPTFSQTDREHGSKTSAKALYEQRKNYARDSVSSVSDISQYRVEHL
TTFVLD RDKDAMITVDDGIRKLLKLLDAKGK VWTQDMILQVDDRAVSLIDLESKNELENFPLNTIQHCQAVM
HSCSYDSVLALVCKEPTQNKPD LHLFQCDEVKANLISEDIESAISDSKGGKQKRRPDALRMISNADPSIP
PPPRAPAPAPPGTVTQVDVRSRVAAWSAWAADQGD F EKPRQYHEQEETPEMMAARIDRDVQILNHILDDI
EFFITKLQKAAEAFSELSKRKKNKKGKRKGPGEGLTLRAKPPPDEF LDCFQFKHGFNLLAKLKSHIQ
NPSAADLVHFLFTPLNMVVQATGGPELASSVLSPLL NKDTIDFLNYTVNGDERQLWMSLGGTWMKARAEW
PKEQFIPPYVPRFRNGWEPMLNFMGATMEQDLYQLAESVANVAEHQRKQEI KRLSTEHSSVSEYHPADG
YAFSSNIYTRGSHLDQGEAAVAFKPTS NRHIDRNYEPLKTQPKKYAKSKYDFVARNSELSVLKDDILEI
LDDRKQWWKVRNASGDSGFV PNNILDIVRPPESGLGRADPPYTHTIQQRMEY GPRPADTPPAPSPPTP
VPVPVPLPPSTPAPVPVSKVPANITRQNSSSDSGGSIVRDSQRHKQLPVDRRKSQMEEVQDEL IHR LTI
GRSAAQKKFHVPRQNV P VINITYDSTPEDVKTWLQSKGFNPVTVNSL GVLNGAQLFSLNKDELRTVCPEG
ARVYSQITVQKAALEDSSGSSELQEIMRRRQEKISAAASDSGVSFDEGSSH
```

TRTRPLE - GFP Tag - V

Restriction Sites: Sgfl-MluI

Cloning Scheme:

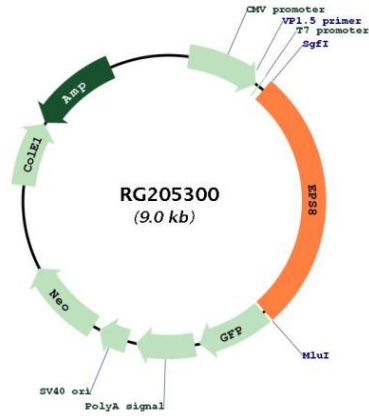
Cloning sites used for ORF Shutting:



ACCN: NM_004447
 ORF Size: 2466 bp

OTI Disclaimer:	<p>Due to the inherent nature of this plasmid, standard methods to replicate additional amounts of DNA in E. coli are highly likely to result in mutations and/or rearrangements. Therefore, OriGene does not guarantee the capability to replicate this plasmid DNA. Additional amounts of DNA can be purchased from OriGene with batch-specific, full-sequence verification at a reduced cost. Please contact our customer care team at custsupport@origene.com or by calling 301.340.3188 option 3 for pricing and delivery.</p> <p>The molecular sequence of this clone aligns with the gene accession number as a point of reference only. However, individual transcript sequences of the same gene can differ through naturally occurring variations (e.g. polymorphisms), each with its own valid existence. This clone is substantially in agreement with the reference, but a complete review of all prevailing variants is recommended prior to use. More info</p>
OTI Annotation:	<p>This clone was engineered to express the complete ORF with an expression tag. Expression varies depending on the nature of the gene.</p>
Components:	<p>The ORF clone is ion-exchange column purified and shipped in a 2D barcoded Matrix tube containing 10ug of transfection-ready, dried plasmid DNA (reconstitute with 100 ul of water).</p>
Reconstitution Method:	<ol style="list-style-type: none">1. Centrifuge at 5,000xg for 5min.2. Carefully open the tube and add 100ul of sterile water to dissolve the DNA.3. Close the tube and incubate for 10 minutes at room temperature.4. Briefly vortex the tube and then do a quick spin (less than 5000xg) to concentrate the liquid at the bottom.5. Store the suspended plasmid at -20°C. The DNA is stable for at least one year from date of shipping when stored at -20°C.
RefSeq:	NM_004447.3
RefSeq Size:	3912 bp
RefSeq ORF:	2469 bp
Locus ID:	2059
UniProt ID:	Q12929
Cytogenetics:	12p12.3
Domains:	SH3, PID
Protein Families:	Druggable Genome
Gene Summary:	<p>This gene encodes a member of the EPS8 family. This protein contains one PH domain and one SH3 domain. It functions as part of the EGFR pathway, though its exact role has not been determined. Highly similar proteins in other organisms are involved in the transduction of signals from Ras to Rac and growth factor-mediated actin remodeling. Alternate transcriptional splice variants of this gene have been observed but have not been thoroughly characterized. [provided by RefSeq, Jul 2008]</p>

Product images:



Circular map for RG205300