

Product datasheet for **RG205294**

SMCP (NM_030663) Human Tagged ORF Clone

Product data:

Product Type: Expression Plasmids
Product Name: SMCP (NM_030663) Human Tagged ORF Clone
Tag: TurboGFP
Symbol: SMCP
Synonyms: HSMCSGEN1; MCS; MCSP
Mammalian Cell Selection: Neomycin
Vector: pCMV6-AC-GFP (PS100010)
E. coli Selection: Ampicillin (100 ug/mL)
ORF Nucleotide Sequence: >RG205294 representing NM_030663
Red=Cloning site Blue=ORF Green=Tags(s)

TTTGTAAATACGACTCACTATAGGGCGGCCGGAATTCGTCGACTGGATCCGGTACCGAGGAGATCTGCC
GCC**CGATCGCC**

ATGTGTGACCAGACAAAACACAGTAAATGCTGCCAGCAAAAGGCAATCAATGCTGCCACCACAGCAGA
ACCAGTGCTGCCAGTCAAAGGCAATCAATGCTGCCACCAAAACAGAACCAAGTGCTGCCAGCCAAAAGG
CAGTCAATGCTGCCACCAAAACACAATCACTGCTGCCAGCCAAAACCCCATGCTGCATTCAGGCCAGG
TGCTGTGGTTTGAGACCAAGCCTGAAGTCTACCCCTTAACATGGAGTCTGAGCCCACTACCGCAAA
CTCAGGACAAGGGCTGTCAAACCCAGCAGCAGCCCATAGCCACAAAATGAGTCCAGGCCAAGCAAA

ACGCGTACGCGGCCGCTCGAG - GFP Tag - GTTTAA

Protein Sequence: >RG205294 representing NM_030663
Red=Cloning site Green=Tags(s)
MCDQTKHSKCCPAKGNQCCPPQQNQCCQSKGNQCCPPKQNCQPKGSQCCPPKHNHCCQPKPPCCIQR
CCGLETKPEVSPLNMESEPNPQTQDKGCQTQQPHSPQNESRPSK

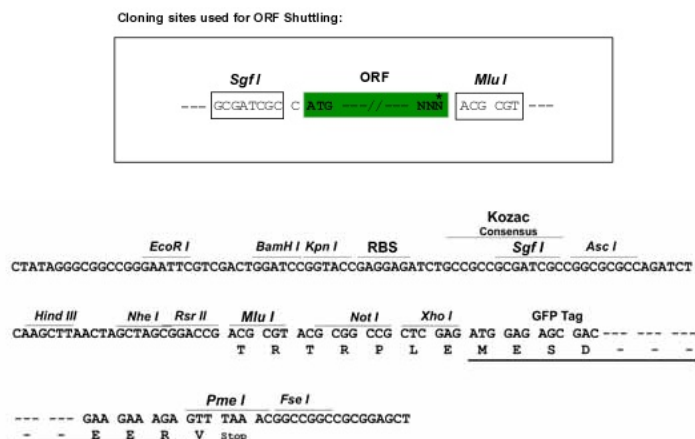
TRTRPLE - GFP Tag - V

Restriction Sites: Sgfl-MluI



[View online »](#)

Cloning Scheme:



ACCN: NM 030663

ORF Size: 348 bp

OTI Disclaimer: The molecular sequence of this clone aligns with the gene accession number as a point of reference only. However, individual transcript sequences of the same gene can differ through naturally occurring variations (e.g. polymorphisms), each with its own valid existence. This clone is substantially in agreement with the reference, but a complete review of all prevailing variants is recommended prior to use. More info

OTI Annotation: This clone was engineered to express the complete ORF with an expression tag. Expression varies depending on the nature of the gene.

Components: The ORF clone is ion-exchange column purified and shipped in a 2D barcoded Matrix tube containing 10ug of transfection-ready, dried plasmid DNA (reconstitute with 100 ul of water).

Reconstitution Method:

1. Centrifuge at 5,000xg for 5min.
2. Carefully open the tube and add 100ul of sterile water to dissolve the DNA.
3. Close the tube and incubate for 10 minutes at room temperature.
4. Briefly vortex the tube and then do a quick spin (less than 5000xg) to concentrate the liquid at the bottom.
5. Store the suspended plasmid at -20°C. The DNA is stable for at least one year from date of shipping when stored at -20°C.

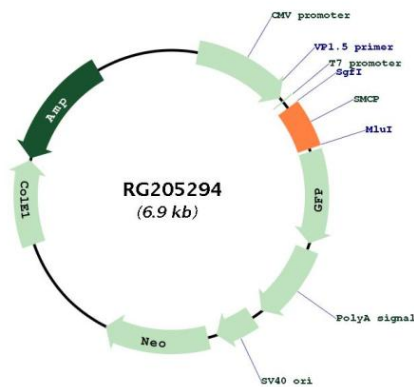
Note: Plasmids are not sterile. For experiments where strict sterility is required, filtration with 0.22um filter is required.

RefSeq: [NM_030663.3](#)

RefSeq Size: 784 bp
 RefSeq ORF: 351 bp
 Locus ID: 4184
 UniProt ID: [P49901](#)
 Cytogenetics: 1q21.3

Gene Summary: Sperm mitochondria differ in morphology and subcellular localization from those of somatic cells. They are elongated, flattened, and arranged circumferentially to form a helical coiled sheath in the midpiece of the sperm flagellum. The protein encoded by this gene localizes to the capsule associated with the mitochondrial outer membranes and is thought to function in the organization and stabilization of the helical structure of the sperm's mitochondrial sheath. [provided by RefSeq, Jul 2008]

Product images:



Circular map for RG205294