

Product datasheet for **RG205285**

Dexas1 (RASD1) (NM_016084) Human Tagged ORF Clone

Product data:

Product Type:	Expression Plasmids
Product Name:	Dexas1 (RASD1) (NM_016084) Human Tagged ORF Clone
Tag:	TurboGFP
Symbol:	Dexas1
Synonyms:	AGS1; DEXRAS1; MGC:26290
Mammalian Cell Selection:	Neomycin
Vector:	pCMV6-AC-GFP (PS100010)
E. coli Selection:	Ampicillin (100 ug/mL)
ORF Nucleotide Sequence:	>RG205285 representing NM_016084 Red=Cloning site Blue=ORF Green=Tags(s)

TTTTGTAATACGACTCACTATAGGGCGGCCGGAATTCGTCGACTGGATCCGGTACCGAGGAGATCTGCC
 GCC**CGATCGCC**

ATGAAACTGGCCGCGATGATCAAGAAGATGTGCCCAGCGACTCGGAGCTGAGTATCCCGCCAAGAACT
 GCTATCGCATGGTCATCCTCGGCTCGTCCAAGGTGGGCAAGACGGCCATCGTGTCGCGCTTCCTCACCGG
 CCGCTTCGAGGACGCCTACACGCCTACCATCGAGGACTCCACCACAAGTTCTACTCCATCCGCGGCGAG
 GTCTACCAGCTCGACATCCTCGACACGTCCGGCAACCACCGTTCCCGCCATGCGGCGCCTCTCCATCC
 TCACAGGAGACGTTTTTCATCCTGGTGTTCAGTCTGGACAACCGCGACTCCTTCGAGGAGGTGCAGCGGCT
 CAGGCAGCAGATCCTCGACACCAAGTCTTGCTCAAGAACAAAACCAAGGAGAACGTGGACGTGCCCTG
 GTCATCTGCGGCAACAAGGGTGACCGCGACTTCTACCGCGAGGTGGACCAGCGCGAGATCGAGCAGCTGG
 TGGGCGACGACCCCGAGCGCTGCGCCTACTTCGAGATCTCGGCCAAGAAGAACAGCAGCCTGGACCAGAT
 GTTCCGCGCGCTCTTCGCCATGGCCAAGCTGCCAGCGAGATGAGCCAGACCTGCACCGCAAGGTCTCG
 GTGCAGTACTGCGACGTGCTGCACAAGAAGGCGCTGCGGAACAAGAAGCTGCTGCGGGCCGCGCAGCGGCG
 GCGGCGGCGGCGACCCGGGCGACGCTTTGGCATCGTGGCACCCTTCGCGCGCCGCGCCAGCGTACACAG
 CGACCTCATGTACATCCGCGAGAAGGCCAGCGCCGGCAGCCAGGCCAAGGACAAGGAGCGCTGCGTCATC
 AGC

ACGCGTACGCGGCCGCTCGAG - GFP Tag - GTTTAA


[View online »](#)

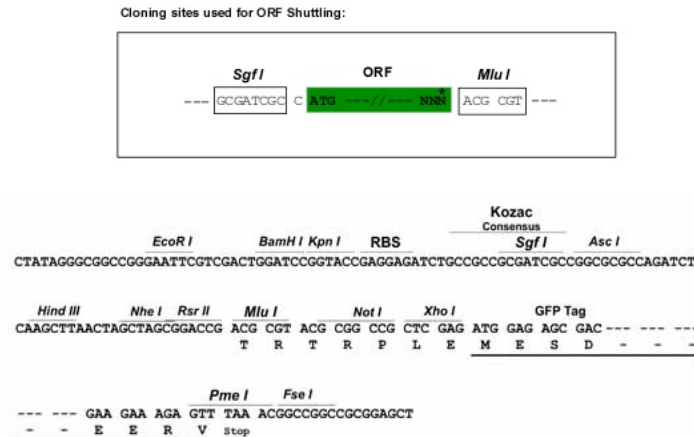
Protein Sequence: >RG205285 representing NM_016084
 Red=Cloning site Green=Tags(s)

MKLAAMIKKMCPDSELSIPAKNCYRMVILGSSKVGKTAIVSRFLTGRFEDAYTPTIEDFHRKFYSIRGE
 VYQLDILDTSNGHPFAMRRLSILTGDVFLVFSLDNRDSFEVQRLRQQILDTKSLKNKTKENVDPVPL
 VICGNKGDRDFYREVDQREIEQLVGDDPQRCAYFEISAKKNSSLDQMFRLFAMAKLPSEMSPDHLHRKVS
 VQYCDVLHKKALRNKKLLRAGSGGGGGPDGAFGIVAPFARRPSVHSDLMYIREKASAGSQAKDKERCVI
 S

TRTRPLE – GFP Tag – V

Restriction Sites: SgfI-MluI

Cloning Scheme:



ACCN: NM_016084

ORF Size: 843 bp

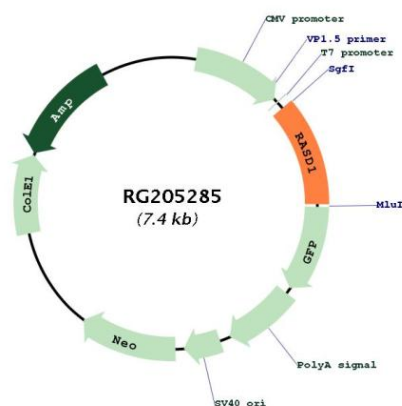
OTI Disclaimer: The molecular sequence of this clone aligns with the gene accession number as a point of reference only. However, individual transcript sequences of the same gene can differ through naturally occurring variations (e.g. polymorphisms), each with its own valid existence. This clone is substantially in agreement with the reference, but a complete review of all prevailing variants is recommended prior to use. [More info](#)

OTI Annotation: This clone was engineered to express the complete ORF with an expression tag. Expression varies depending on the nature of the gene.

Components: The ORF clone is ion-exchange column purified and shipped in a 2D barcoded Matrix tube containing 10ug of transfection-ready, dried plasmid DNA (reconstitute with 100 ul of water).

Reconstitution Method:	<ol style="list-style-type: none"> 1. Centrifuge at 5,000xg for 5min. 2. Carefully open the tube and add 100ul of sterile water to dissolve the DNA. 3. Close the tube and incubate for 10 minutes at room temperature. 4. Briefly vortex the tube and then do a quick spin (less than 5000xg) to concentrate the liquid at the bottom. 5. Store the suspended plasmid at -20°C. The DNA is stable for at least one year from date of shipping when stored at -20°C.
Note:	Plasmids are not sterile. For experiments where strict sterility is required, filtration with 0.22um filter is required.
RefSeq:	<u>NM_016084.5</u>
RefSeq Size:	1758 bp
RefSeq ORF:	846 bp
Locus ID:	51655
UniProt ID:	<u>Q9Y272</u>
Cytogenetics:	17p11.2
Domains:	ras, RAN, RAS, RHO, RAB
Protein Families:	Druggable Genome
Gene Summary:	<p>This gene encodes a member of the Ras superfamily of small GTPases and is induced by dexamethasone. The encoded protein is an activator of G-protein signaling and acts as a direct nucleotide exchange factor for Gi-Go proteins. This protein interacts with the neuronal nitric oxide adaptor protein CAPON, and a nuclear adaptor protein FE65, which interacts with the Alzheimer's disease amyloid precursor protein. This gene may play a role in dexamethasone-induced alterations in cell morphology, growth and cell-extracellular matrix interactions. Epigenetic inactivation of this gene is closely correlated with resistance to dexamethasone in multiple myeloma cells. Alternatively spliced transcript variants encoding different isoforms have been found for this gene.[provided by RefSeq, Sep 2011]</p>

Product images:



Circular map for RG205285