

Product datasheet for **RG205280**

GNPTG (NM_032520) Human Tagged ORF Clone

Product data:

Product Type:	Expression Plasmids
Product Name:	GNPTG (NM_032520) Human Tagged ORF Clone
Tag:	TurboGFP
Symbol:	GNPTG
Synonyms:	C16orf27; GNPTAG; LP2537; RJD9
Mammalian Cell Selection:	Neomycin
Vector:	pCMV6-AC-GFP (PS100010)
E. coli Selection:	Ampicillin (100 ug/mL)
ORF Nucleotide Sequence:	>RG205280 representing NM_032520 Red=Cloning site Blue=ORF Green=Tags(s)

TTTTGTAATACGACTCACTATAGGGCGGCCGGAATTCGTCGACTGGATCCGGTACCGAGGAGATCTGCC
GCC**CGATCGCC**

ATGGCGCGGGGCTGGCGGGCTCCTGTTGCTCCTCGGGCTCTCGGCCGGCGGGCCCGCCGGCAGGTG
CAGCGAAGATGAAGGTGGTGGAGGAGCCCAACGCGTTTGGGGTGAACAACCCGTTCTTGCCTCAGGCCAG
TCGCCTCCAGGCCAAGAGGGATCCTTACCCGTGTCTGGACCCGTGCATCTTCCGACTCTCGGGCAAG
TGCTTCAGCCTGGTGGAGTCCACGTACAAGTATGAGTTCTGCCCGTTCCACAACGTGACCCAGCAGCAGC
AGACCTTCGCTGGAACGCCTACAGTGGGATCCTCGGCATCTGGCAGAGTGGGAGATCGCCAACAACAC
CTTCACGGGCATGTGGATGAGGGACGGTGACGCCTGCCGTTCCCGGAGCCGGCAGAGCAAGTGGAGCTG
GCGTGTGGAAAAAGCAACCGGCTGGCCCATGTGTCCGAGCCGAGCACCTGCGTCTACGCGTGACGTTTCG
AGACCCCTCGTCTGCCACCCACGCCTTGCTAGTGTACCCAAACCTGCCAGAGGCCCTGCAGCGGCA
GTGGGACCAGGTAGAGCAGGACCTGGCCGATGAGCTGATCACCCCAAGGGCCATGAGAAGTTGCTGAGG
ACACTTTTGGAGGATGCTGGCTACTTAAAGACCCAGAAAATGAACCCACCCAGCTGGAGGGAGGTCCTG
ACAGCTTGGGGTTTGGAGCCCTGGAAAAGTGCAGGAAGGCTCATAAAGAAGTCTCAAAGGAGATCAAAG
GCTGAAAGGTTTGGCTCACCCAGCACGGCATCCCTACACGAGGCCACAGAAAAGTCCAAGTGGAGCAC
TTGGGCCACGAGACGCCAGAGCCAAGTCTCCAGAGCAGCTGCGGGGTGACCCAGGACTGCGTGGGAGTT
TG

AGCGGACCGACGCGTACGCGGCCGCTCGAG - GFP Tag - GTTTAA



[View online »](#)

Protein Sequence: >RG205280 representing NM_032520
Red=Cloning site Green=Tags(s)

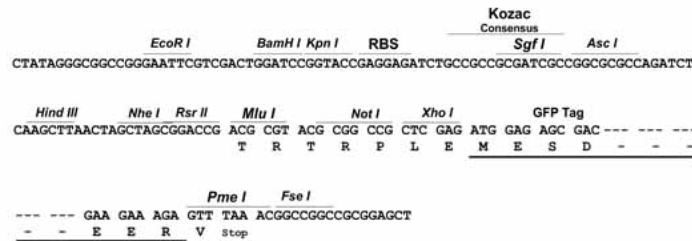
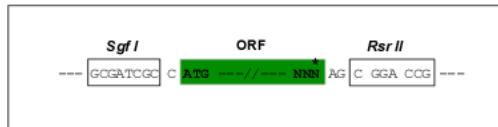
MAAGLARLLLLLGLSAGGPAPAGAAKMKVVEEPNAPFGVNNPFLPQASRLQAKRDPSPVSGPVHLFRLSGK
 CFSLVESTYKYEFCPFHNVTQHEQTFRWNAYSGILGIWHEWEIANNTFTGMWMRDGDACRSRSRQSKVEL
 ACGKSNRLAHVSEPSTCVYALTFETPLVCHPHALLVYPTLPEALQRQWDQVEQDLADELITPQGHEKLLR
 TLFEDAGYLKTPENEPTQLEGGPDSLGFETLENCRAKHKELSKKIKRLKGLLTQHGIPYTRPTETSNI
 LHETPRAKSPEQLRGDPGLRGS

SGPTRRRLE - GFP Tag - V

Restriction Sites: SgfI-RsrII

Cloning Scheme:

Cloning sites used for ORF Shuttling:



ACCN: NM_032520

ORF Size: 912 bp

OTI Disclaimer: The molecular sequence of this clone aligns with the gene accession number as a point of reference only. However, individual transcript sequences of the same gene can differ through naturally occurring variations (e.g. polymorphisms), each with its own valid existence. This clone is substantially in agreement with the reference, but a complete review of all prevailing variants is recommended prior to use. [More info](#)

OTI Annotation: This clone was engineered to express the complete ORF with an expression tag. Expression varies depending on the nature of the gene.

Components: The ORF clone is ion-exchange column purified and shipped in a 2D barcoded Matrix tube containing 10ug of transfection-ready, dried plasmid DNA (reconstitute with 100 ul of water).

Reconstitution Method:

1. Centrifuge at 5,000xg for 5min.
2. Carefully open the tube and add 100ul of sterile water to dissolve the DNA.
3. Close the tube and incubate for 10 minutes at room temperature.
4. Briefly vortex the tube and then do a quick spin (less than 5000xg) to concentrate the liquid at the bottom.
5. Store the suspended plasmid at -20°C. The DNA is stable for at least one year from date of shipping when stored at -20°C.

RefSeq: [NM_032520.3](#), [NP_115909.1](#)

RefSeq Size: 1228 bp

RefSeq ORF: 918 bp

Locus ID: 84572

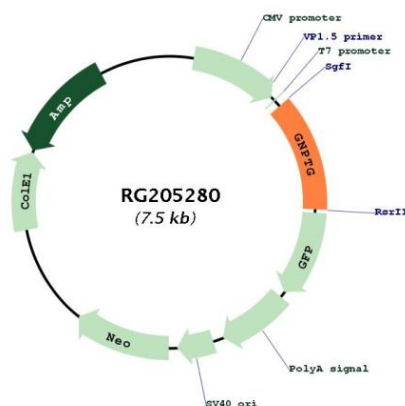
UniProt ID: [Q9UJJ9](#)

Cytogenetics: 16p13.3

Protein Families: Secreted Protein

Gene Summary: This gene encodes the gamma subunit of the N-acetylglucosamine-1-phosphotransferase complex. This hexameric complex, composed of alpha, beta and gamma subunits, catalyzes the first step in synthesis of a mannose 6-phosphate lysosomal recognition marker. This enzyme complex is necessary for targeting of lysosomal hydrolases to the lysosome. Mutations in the gene encoding the gamma subunit have been associated with mucopolipidosis IIIC, also known as mucopolipidosis III gamma.[provided by RefSeq, Feb 2010]

Product images:



Circular map for RG205280