

Product datasheet for **RG205268**

USP16 (NM_001001992) Human Tagged ORF Clone

Product data:

Product Type:	Expression Plasmids
Product Name:	USP16 (NM_001001992) Human Tagged ORF Clone
Tag:	TurboGFP
Symbol:	USP16
Synonyms:	UBP-M; UBPM
Mammalian Cell Selection:	Neomycin
Vector:	pCMV6-AC-GFP (PS100010)
E. coli Selection:	Ampicillin (100 ug/mL)



[View online »](#)

ORF Nucleotide Sequence:

>RG205268 representing NM_001001992
 Red=Cloning site Blue=ORF Green=Tags(s)

TTTTGTAATACGACTCACTATAGGGCGGCCGGGAATTCGTCGACTGGATCCGGTACCGAGGAGATCTGCC
 GCC**GCGATCGCC**

ATGGGAAAGAAACGGACAAAGGGAAAACTGTTCCAATCGATGATTCCTCTGAAACTTTAGAACCTGTGT
 GCAGACACATTAGAAAAGGATTGGAACAAGGTAATTTGAAAAAGGCTTTAGTGAATGTGGAATGGAATAT
 CTGCCAAGACTGTAAGACTGACAATAAAGTGAAAGATAAAGCTGAAGAAGAAACAGAAGAAAAGCCTTCA
 GTTTGGCTGTGTCTTAAATGTGGCCATCAGGGCTGTGGCAGAAATTCAGGAGCAGCATGCCTTGAAGC
 ACTATCTGACGCCAAGATCTGAACCTCACTGTCTGTTCTTAGTTTGGCAACTGGAGTGTATGGTGTTA
 CGTATGTGATAATGAGGTCCAGTATTGTAGTTCAAACCAGTTGGGTCAAGTGGTTGATTATGTCAGAAAA
 CATGCCAGCATTACAACCCAAAGCCAGAGAAAGATAATGAAAAATTGAACTTGAAAAATAAAAAATTAG
 AAAAGAGAGTAAGAATGAACAAGAGAGAGAAAAGAAGGAAAACATGGCTAAAGAGAATCCTCCCATGAA
 TTCTCCTTGCCAAATAACCGTGAAGGACTCAGTAATTTGGGAAACACATGTTTCTCAATGCAGTTATG
 CAGAACTTGTCAAAACACCAAGTCTTAGAGAACTACTAAAAGAAGTGAAGTGTCTGGAACAATTTGTA
 AAATTGAACCACCTGATTTGGCATTAAACAGAACATTAGAAATAAACCTTGAGCCTCCAGGCCCTCTTAC
 TTTAGCCATGAGCCAGTTTCTTAATGAGATGCAAGAGACCAAAAAGGGGTTGTGACACCGAAAGAACTC
 TTTTCTCAGGTCTGTAAGAAAGCAGTGCAGTTTAAAGGCTATCAGCAGCAAGACGCCAGGAGCTGCTTC
 GCTACTTATTGGATGGGATGAGAGCAGAAGAACACCAAGAGTGAGTAAAGGAATACTTAAAGCATTGG
 TAATTCTACTGAAAAGTTGGATGAAGAACTAAAAATAAAGTTAAAGATTATGAGAAGAAAAATCAATG
 CCAAGTTTGTGACCGCATCTTGGTGGTGAACCTAAGTAGTATGATCATGTGTGATCAATGCAGAACTG
 TCTCCTTGGTTCATGAATCTTTCCTTGATTTGTCCCTCCAGTTTATAGATGATCAGAGGTAAGAAAAAG
 TGTAAATGATAAAAACTGAAAAAGACAGTGGAGGATGAAGATCAAGATAGTGAGGAAGAAAAAGATAAC
 GACAGTTACATAAAGAGAGAAGTGATATTCTTCTGGAACAAGTAAGCACTTACAGAAAAAAGCAAGA
 AACAAAGCCAAAAAGCAAGCAAGAACCAACGAAGACAACAAAAAATCAAGGAAAAGTTCTTCAATTTAA
 TGATATTTGTAATGACCATCTGAAGACAGTATAATGAAGCTGAAATGTCACCTTCAAGGAGAAGTA
 AATATTAATCCAACCATTTTCAAGAGGGTGTATGCATAAAGAATATTGTGCAACCAAGAAAGATT
 TGAATGGCCAAGCAAAAATGATCGAAAGTGAACCTGACAATCAAAAATCCACAGAGGAAGTAGATATGAA
 AAATATCAACATGGATAATGATCTGGAGGTTTTAACATCTTCTCCCACTAGGAATTTAAATGGTGCCTAC
 CTAAACGGAAGGGAGCAATGGAGAAGTGGACATTTCCAATGGTTTCAAAAACCTAAATTTGAATGCTGCTC
 TTCATCCTGATGAAATAATATAGAGATTCTGAATGATAGTCATACTCCTGGAACAAGGTGTATGAGGT
 TGTAAATGAAGATCCAGAACTGCTTCTGTACTCTTGCAAACAGGGAAGTTTTCAATACTGATGAGTGT
 TCAATCCAACATTGTTTATATCAGTTACCCCGTAATGAGAACTTCGAGATGCGAATAAACTGCTTTGTG
 AAGTATGCACACGGAGACAGTGTAAATGGACCAAGGCAAAATAAAAAGGTGAAAGGAAGCATGTTTACAC
 CAATGCCAAAAAGCAGATGCTAATTTCTTGTCTCTCTGTTCTTACTTTCATTTAAAGAGATTTTCA
 CAGGCTGGTTTTAACCTACGCAAAGTTAACAAACATAAAGTTTCCGGAATCTTAGATTTGGCTCCTT
 TTTGCACCCTTAAATGTAAGAATGTTGCAGAAGAAAATAACAAGGGTACTCTATTCCTTATATGGAGTTGT
 TGAACACAGTGGTACTATGAGGTGCGGGCATTACACTGCCTATGCCAAGGCAAGAACCAGCAAAATAGTCAT
 CTCTTAATCTTGTCTTACGGTGATATCCACAAGATTTTGAATGGAATCAAAAAGGGCAGTGGTTTC
 ACATCAGCGACACATGTGCAAGCTGTGCCTACAACCTAAAGTACTAAACTCACAAGCGTACCTCCTATT
 TTATGAGAGAATACTG

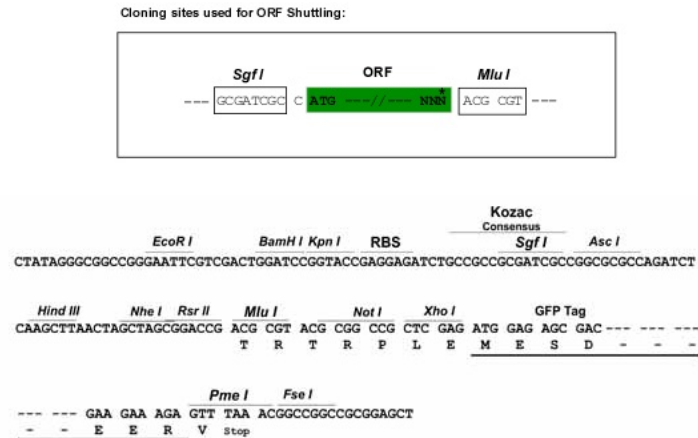
ACGCGTACGCGGCCGCTCGAG – GFP Tag – GTTTAA

Protein Sequence: >RG205268 representing NM_001001992
Red=Cloning site Green=Tags(s)

MGKKRTKGKTVPIDDSSETLEPVCRRHIRKGLEQGNLKKALVNVEWNICQDCKTDNKVKDKAEETEETEEKPS
VWLCLKCGHQGCGRNSQEQHALKHYLTPRSEPHCLVLSLDNWSVWCYVCDNEVQYCSSNQLGQVVDYVRK
HASITTPKPEKDNGNIELENKKLEKESKNEQEREKKNMAKENPPMNSPCQITVKGLSNLGNTCFFNAVM
QNLSTQTPVLRRELLKEVKMSGTIVKIEPPDLALTEPLEINLEPPGPLTLAMSQFLNEMQETKKGVVTPKEL
FSQVCKKAVRFKGYQQDSQELLRYLLDGMRAEEHQRVSKGILKAFGNSTEKLDEELKNKVKDYEKKS
PSFVDRIFGGELTSMIMCDQCRTVSLVHESFLDLSLPVLDQSGKKS VNDK NLKKTVEDEDQDSEEEKDN
DSYIKERSDIPSGTSKHLQKKAKKQAKKQAKNQRQKIQGKVLHLNDICTIDHPEDSDNEAEMSLQGEV
NIKSNHISQEGVMHKEYCVNQDLNGQAKMIESVTDNQKSTEEVDMKNINMDNDLEVLTSPPTRNLNGAY
LTEGSNGEVDISNGFKNLNLNAALHPDEINIEILNDSHTPGTKVYEVVNEDEPETAFTLANREVFNTDEC
SIQHCLYQFTRNEKLRDANKLLCEVCTRRQCNGPKANIKGERKHVYTNAKKQMLISLAPPVLT LHLKRFQ
QAGFNLRKVNKHIFPEILDLPFCTLCKNVAEENTRVLYSLYGVVEHSGTMRSGHYTA YAKARTANSH
LSNLVLHGDI PQDFEMESKGQWFHISDTHVQAVPTTKVLNSQAYLLFYERIL

TRTRPLE - GFP Tag - V

Restriction Sites: Sgfl-MluI

Cloning Scheme:


ACCN: NM_001001992

ORF Size: 2466 bp

OTI Disclaimer: The molecular sequence of this clone aligns with the gene accession number as a point of reference only. However, individual transcript sequences of the same gene can differ through naturally occurring variations (e.g. polymorphisms), each with its own valid existence. This clone is substantially in agreement with the reference, but a complete review of all prevailing variants is recommended prior to use. [More info](#)

OTI Annotation: This clone was engineered to express the complete ORF with an expression tag. Expression varies depending on the nature of the gene.

Components: The ORF clone is ion-exchange column purified and shipped in a 2D barcoded Matrix tube containing 10ug of transfection-ready, dried plasmid DNA (reconstitute with 100 ul of water).

Reconstitution Method:

1. Centrifuge at 5,000xg for 5min.
2. Carefully open the tube and add 100ul of sterile water to dissolve the DNA.
3. Close the tube and incubate for 10 minutes at room temperature.
4. Briefly vortex the tube and then do a quick spin (less than 5000xg) to concentrate the liquid at the bottom.
5. Store the suspended plasmid at -20°C. The DNA is stable for at least one year from date of shipping when stored at -20°C.

RefSeq: [NM_001001992.1](#), [NP_001001992.1](#)

RefSeq Size: 2986 bp

RefSeq ORF: 2469 bp

Locus ID: 10600

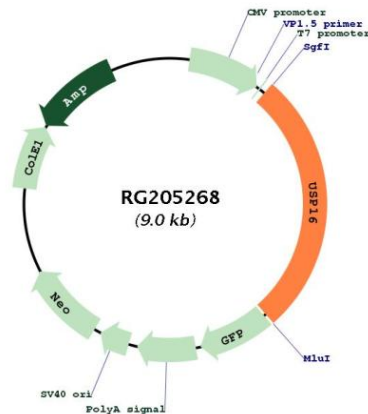
UniProt ID: [Q9Y5T5](#)

Cytogenetics: 21q21.3

Protein Families: Protease

Gene Summary: This gene encodes a deubiquitinating enzyme that is phosphorylated at the onset of mitosis and then dephosphorylated at the metaphase/anaphase transition. It can deubiquitinate H2A, one of two major ubiquitinated proteins of chromatin, in vitro and a mutant form of the protein was shown to block cell division. Alternate transcriptional splice variants, encoding different isoforms, have been characterized. [provided by RefSeq, Jul 2008]

Product images:



Circular map for RG205268