

## Product datasheet for **RG205260**

### ABHD2 (NM\_007011) Human Tagged ORF Clone

#### Product data:

Product Type:	Expression Plasmids
Product Name:	ABHD2 (NM_007011) Human Tagged ORF Clone
Tag:	TurboGFP
Symbol:	ABHD2
Synonyms:	HS1-2; LABH2; PPHP1-2
Mammalian Cell Selection:	Neomycin
Vector:	pCMV6-AC-GFP (PS100010)
E. coli Selection:	Ampicillin (100 ug/mL)
ORF Nucleotide Sequence:	>RG205260 representing NM_007011 Red=Cloning site Blue=ORF Green=Tags(s)

TTTTGTAATACGACTCACTATAGGGCGCCGGGAATTCGTCGACTGGATCCGGTACCGAGGAGATCTGCC  
GCC**CGATCGCC**

ATGAATGCCATGCTGGAGACTCCCGAACTCCAGCCGTGTTTGTGGAGTGAAGCTGGCTGCAGTGGCTG  
CTGTGCTGTACGTGATCGTCCGGTGTGTTGAACCTGAAGAGCCCCACAGCCCCACCTGACCTCTACTTCCA  
GGACTCGGGGCTCTCACGCTTTCTGCTCAAGTCTGTCTCTTCTGACCAAAGAATACATTCCACCGTTG  
ATCTGGGGGAAAAGTGGACACATCCAGACAGCCTTGTATGGGAAGATGGGAAGGGTGAAGTGCACATC  
CTTATGGGCACCGGAAGTTCATCACTATGTCTGATGGAGCCACTTCTACATTCGACCTCTTCGAGCCCTT  
GGCTGAGCACTGTGTTGGAGATGATATCCCATGGTCATCTGCCCTGGAATTGCCAATCAGACGAGAAG  
CAATACATCCGCACTTTGTTGACTACGCCAGAAAAATGGCTATCGGTGCGCCGTGCTGAACCACTGG  
GTGCCCTGCCCAACATTGAATTGACCTCGCCACGCATGTTACCTATGGCTGCAGTGGGAATTTGGAGC  
CATGGTGAACATCAAGAAGACATATCCCTGACCCAGCTGGTCGTCGTTGGGCTTCAGCTGGGTGGT  
AACATTGTGTGCAAACTTTGGGGGAGACTCAGGCAAACCAAGAGAAGGTCTGTGCTGCGTCAGCGTGT  
GCCAGGGTACAGTGCAGTGGGGCCAGGAACTTCATGCAATGGGATCAGTCCAGCGGTTCTACAA  
CTTCTCATGGCTGACAACATGAAGAAGATCATCTCTCGCACAGGCAAGCTCTTTTTGGAGACCATGTT  
AAGAAACCCAGAGCCTGGAAGACACGGACTTGGCCGCTCTACACAGCAACATCCCTGATGCAGATTG  
ATGACAATGTGATGAGGAAGTTTCACGGCTATAACTCCCTGAAGGAATACTATGAGGAAGAAAGTTGCAT  
GCGGTACCTGCACAGGATTTATGTTCTCTCATGCTGGTTAATGCAGCTGACGATCCGTTGGTGCATGAA  
AGTCTTCTAACCAATCCAAAATCTTTTCAGAGAAACGAGAGAACGTCATGTTTGTGCTGCCTCTGCATG  
GGGGCCACTTGGGCTTCTTTGAGGGCTCTGTGCTGTTCCCGAGCCCTGACATGGATGGATAAGCTGGT  
GGTGGAGTACGCCAACGCCATTTGCCAATGGGAGCGTAACAAGTTGCAGTGTCTGACACGGAGCAGGTG  
GAGGCCGACCTGGAG

**ACGCGT**ACGCGGCCGCTCGAG - GFP Tag - GTTTAA



[View online >](#)

**Protein Sequence:** >RG205260 representing NM\_007011  
Red=Cloning site Green=Tags(s)

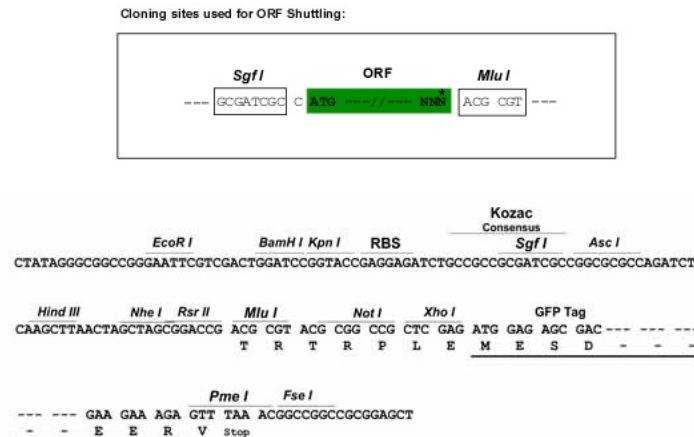
MNAMLETPELPAVFDGVKLAAVAALVYIVRCLNLKSPTAPPDLYFQDSGLSRFLKSCPLLKEYIPPL  
 IWGKSGHIQTALYGKMRVRSPPHYGHRKFITMSDGATSTFDLFEPLAEHCVGDDITMVICPGIANHSEK  
 QYIRTFVDYAQKNGYRCAVLNHLGALPNIELTSPRMFTYGCTWEFGAMVNYIKKTYPLTQLVVVGFSLGG  
 NIVCKYLGETQANQEKVLCCVSVCOGYSALRAQETFMQWDQCQRFFYNFLMADNMKKIILSHRQALFGDHV  
 KKPQSLEDTDL SRLYTATSLMQIDDNVMRKFHGYNSLKEYEYESCMRYLHRIYVPLMLVNAADDPVHE  
 SLLTIPKSLSEKRENVFVPLPHGGHGLGFFEGSVLFPEPLTWMDKLVVEYANAICQWERNKLQCSDETVQ  
 EADLE

TRTRPLE - GFP Tag - V

**Restriction Sites:**

SgfI-MluI

**Cloning Scheme:**



**ACCN:** NM\_007011

**ORF Size:** 1275 bp

**OTI Disclaimer:** The molecular sequence of this clone aligns with the gene accession number as a point of reference only. However, individual transcript sequences of the same gene can differ through naturally occurring variations (e.g. polymorphisms), each with its own valid existence. This clone is substantially in agreement with the reference, but a complete review of all prevailing variants is recommended prior to use. [More info](#)

**OTI Annotation:** This clone was engineered to express the complete ORF with an expression tag. Expression varies depending on the nature of the gene.

**Components:** The ORF clone is ion-exchange column purified and shipped in a 2D barcoded Matrix tube containing 10ug of transfection-ready, dried plasmid DNA (reconstitute with 100 ul of water).

**Reconstitution Method:**

1. Centrifuge at 5,000xg for 5min.
2. Carefully open the tube and add 100ul of sterile water to dissolve the DNA.
3. Close the tube and incubate for 10 minutes at room temperature.
4. Briefly vortex the tube and then do a quick spin (less than 5000xg) to concentrate the liquid at the bottom.
5. Store the suspended plasmid at -20°C. The DNA is stable for at least one year from date of shipping when stored at -20°C.

**RefSeq:** [NM\\_007011.2](#)

**RefSeq Size:** 9085 bp

**RefSeq ORF:** 1278 bp

**Locus ID:** 11057

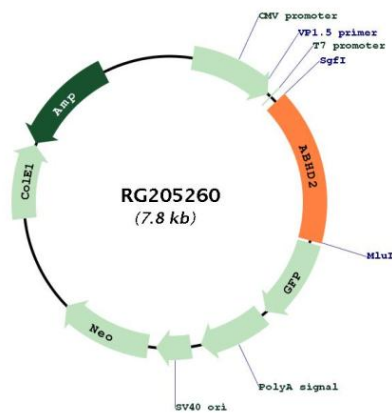
**UniProt ID:** [P08910](#)

**Cytogenetics:** 15q26.1

**Domains:** abhydrolase

**Gene Summary:** This gene encodes a protein containing an alpha/beta hydrolase fold, which is a catalytic domain found in a wide range of enzymes. The encoded protein is an acylglycerol lipase that catalyzes the hydrolysis of endocannabinoid arachidonoylglycerol from the cell membrane. This leads to activation of the sperm calcium channel CatSper, which results in sperm activation. Alternative splicing of this gene results in two transcript variants encoding the same protein. [provided by RefSeq, Jan 2017]

## Product images:



Circular map for RG205260