

## Product datasheet for **RG205253**

### HPCAL4 (NM\_016257) Human Tagged ORF Clone

#### Product data:

**Product Type:** Expression Plasmids  
**Product Name:** HPCAL4 (NM\_016257) Human Tagged ORF Clone  
**Tag:** TurboGFP  
**Symbol:** HPCAL4  
**Synonyms:** HLP4  
**Mammalian Cell Selection:** Neomycin  
**Vector:** pCMV6-AC-GFP (PS100010)  
**E. coli Selection:** Ampicillin (100 ug/mL)  
**ORF Nucleotide Sequence:** >RG205253 representing NM\_016257  
 Red=Cloning site Blue=ORF Green=Tags(s)

TTTTGTAATACGACTCACTATAGGGCGCCGGGAATTCGTCGACTGGATCCGGTACCGAGGAGATCTGCC  
 GCC**CGATCGCC**

ATGGGGAAGACCAACAGCAAGCTGGCCCCGAGGTGCTGGAGGACCTTGTTTCAGAACACTGAGTTCAGCG  
 AGCAGGAGCTGAAGCAGTGGTACAAGGGCTTCTGAAGGACTGCCCCAGCGGCATCCTCAACCTGGAGGA  
 GTTTCAGCAGCTACATCAAGTTCTTCCCTACGGCGACGCCTCCAAGTTCGCGCAGCAGCCTTCCGC  
 ACCTTCGACAAGAACGGCGACGGCACCATCGACTTCGGGAGTTCATCTGCGCCCTGTCGGTCACTCCC  
 GCGGCAGCTTCGAGCAGAAGCTCAACTGGGCTTTGAGATGTACGACCTGGACGGCGACGGGCGCATCAC  
 GCGCTGGAGATGCTGGAGATCATCGAGGCAATCTACAAGATGGTGGCACCGTGATCATGATGCGCATG  
 AACCAGGACGGGCTCACGCCAGCAGCGTGTGGACAAGATCTTCAAGAAGATGGACCAGGATAAGGACG  
 ACCAGATTACATTGGAGGAGTCAAGGAGGCAGCCAAGAGTGACGCATCCATTGTGTTGCTGCTGCAGTG  
 TGACATGCAGAAG

**ACGCGTACGCGGCCGCTCGAG** - GFP Tag - GTTTAA

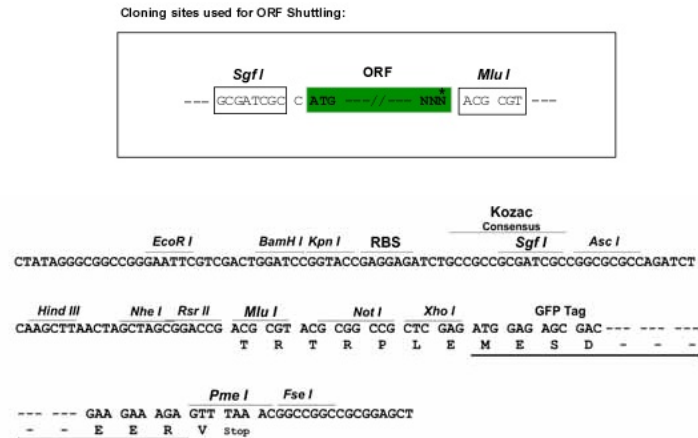
**Protein Sequence:** >RG205253 representing NM\_016257  
 Red=Cloning site Green=Tags(s)

MGKTNKLAPEVLEDLVQNTFSEQELKQWKGLKDCPSGILNLEEFQQLYIKFFPYGDASKFAQHAFR  
 TFDKNGDGTIDFREFICALSVTSRGSFEQKLNWAFEMYDLGDGRITRLEMLEIEIAIYKMGVTVIMMRM  
 NQDGLTPQQRVDKIFKKMDQKDDQITLEEFKEAAKSDASIVLLLQCDMQK

**TRTRPLE** - GFP Tag - V

**Restriction Sites:** Sgfl-MluI



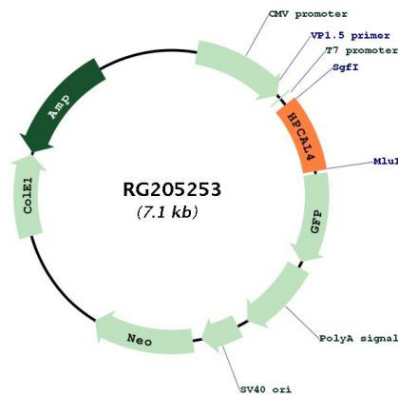
**Cloning Scheme:**


- ACCN:** NM\_016257
- ORF Size:** 573 bp
- OTI Disclaimer:** The molecular sequence of this clone aligns with the gene accession number as a point of reference only. However, individual transcript sequences of the same gene can differ through naturally occurring variations (e.g. polymorphisms), each with its own valid existence. This clone is substantially in agreement with the reference, but a complete review of all prevailing variants is recommended prior to use. [More info](#)
- OTI Annotation:** This clone was engineered to express the complete ORF with an expression tag. Expression varies depending on the nature of the gene.
- Components:** The ORF clone is ion-exchange column purified and shipped in a 2D barcoded Matrix tube containing 10ug of transfection-ready, dried plasmid DNA (reconstitute with 100 ul of water).
- Reconstitution Method:**
1. Centrifuge at 5,000xg for 5min.
  2. Carefully open the tube and add 100ul of sterile water to dissolve the DNA.
  3. Close the tube and incubate for 10 minutes at room temperature.
  4. Briefly vortex the tube and then do a quick spin (less than 5000xg) to concentrate the liquid at the bottom.
  5. Store the suspended plasmid at -20°C. The DNA is stable for at least one year from date of shipping when stored at -20°C.
- RefSeq:** [NM\\_016257.2](#), [NP\\_057341.1](#)
- RefSeq Size:** 4277 bp
- RefSeq ORF:** 576 bp
- Locus ID:** 51440
- UniProt ID:** [Q9UM19](#)
- Cytogenetics:** 1p34.2

**Domains:** EFh

**Gene Summary:** The protein encoded by this gene is highly similar to human hippocalcin protein and hippocalcin like-1 protein. It also has similarity to rat neural visinin-like Ca<sup>2+</sup>-binding protein-type 1 and 2 proteins. This encoded protein may be involved in the calcium-dependent regulation of rhodopsin phosphorylation. The transcript of this gene has multiple polyadenylation sites. Alternatively spliced transcript variants encoding different isoforms have been found for this gene. [provided by RefSeq, Sep 2013]

**Product images:**



Circular map for RG205253