

## Product datasheet for **RG205248**

### TM4SF2 (TSPAN7) (NM\_004615) Human Tagged ORF Clone

#### Product data:

**Product Type:** Expression Plasmids  
**Product Name:** TM4SF2 (TSPAN7) (NM\_004615) Human Tagged ORF Clone  
**Tag:** TurboGFP  
**Symbol:** TM4SF2  
**Synonyms:** A15; CCG-B7; CD231; DXS1692E; MRX58; MXS1; TALLA-1; TM4SF2; TM4SF2b  
**Mammalian Cell Selection:** Neomycin  
**Vector:** pCMV6-AC-GFP (PS100010)  
**E. coli Selection:** Ampicillin (100 ug/mL)  
**ORF Nucleotide Sequence:** >RG205248 representing NM\_004615  
Red=Cloning site Blue=ORF Green=Tags(s)

TTTTGTAATACGACTCACTATAGGGCGGCCGGAATTCGTCGACTGGATCCGGTACCGAGGAGATCTGCC  
 GCCCGATCGCC

ATGGCATCGAGGAGAATGGAGACCAAACCTGTGATAACCTGTCTCAAACCCCTCATCATCTACTCCT  
 TCGTCTTCTGGATCACTGGGGTATCCTGCTGGCTGTTGGAGTCTGGGGCAAACCTACTCTGGGCACCTA  
 TATCTCCCTTATTGCCAAGAATCCACAAATGCTCCCTATGTGCTCATCGGAAGTGGCACCCTATTGTT  
 GTCTTTGGCCTGTTGGATGCTTTGCTACATGTCGTGGTAGCCCATGGATGCTGAACTGTATGCCATGT  
 TTCTGTCCCTGGTTCCTGGCTGAGCTCGTAGCTGGCATTTCAGGGTTTGTGTTTCGTCATGAGATCAA  
 GGACACCTTCTGAGGACTTACACGGACTATGCAGACTTACAATGGCAATGATGAGAGGAGCCGGGCA  
 GTGGACCATGTGCAGCGCAGCCTGAGCTGCTGTGGTGTGCAGAACTACACCAACTGGAGCACCAGCCCT  
 ACTTCTGGAGCATGGCATCCCCCAGCTGCTGCATGAACGAAACTGATTGTAATCCCCAGGATCTACA  
 CAATCTGACTGTGGCCGCCACCAAAGTTAACCAGAAGGGTTGTTATGATCTGGTAACTAGTTTCATGGAG  
 ACTAACATGGGAATCATCGCTGGAGTGGCGTTTGGAAATCGCATTCTCCAGTTAATTGGCATGCTGCTGG  
 CCTGCTGTCTGTCCGGTTCATCAGGCCAATCAGTATGAGATGGTG

ACGCGTACGCGGCCGCTCGAG - GFP Tag - GTTTAA



[View online »](#)

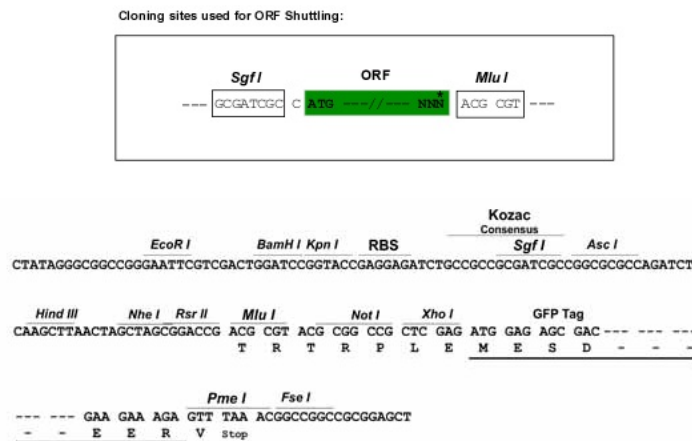
**Protein Sequence:** >RG205248 representing NM\_004615  
 Red=Cloning site Green=Tags(s)

MASRRMETKPVITCLKTLLIIYSFVFWITGVILLAVGVWGLTLGTYISLIAKNSTNAPYVLIGTGTTIV  
 VFGLFGCFATCRGSPWMLKLYAMFLSLVFLAELVAGISGFVFRHEIKDTFLRITYDTMQTYNGNDERSRA  
 VDHVQRSLSCCGVQNYTNWSTSPYFLEHGIPPSCCMNETDCNPQDLHNLVAATKVNQKGCYDLVTSFME  
 TNMGIAGVAFGIAFSQLIGMLLACCLSRFITANQYEMV

TRTRPLE - GFP Tag - V

**Restriction Sites:** SgfI-MluI

**Cloning Scheme:**



**ACCN:** NM\_004615

**ORF Size:** 747 bp

**OTI Disclaimer:** The molecular sequence of this clone aligns with the gene accession number as a point of reference only. However, individual transcript sequences of the same gene can differ through naturally occurring variations (e.g. polymorphisms), each with its own valid existence. This clone is substantially in agreement with the reference, but a complete review of all prevailing variants is recommended prior to use. [More info](#)

**OTI Annotation:** This clone was engineered to express the complete ORF with an expression tag. Expression varies depending on the nature of the gene.

**Components:** The ORF clone is ion-exchange column purified and shipped in a 2D barcoded Matrix tube containing 10ug of transfection-ready, dried plasmid DNA (reconstitute with 100 ul of water).

**Reconstitution Method:**

1. Centrifuge at 5,000xg for 5min.
2. Carefully open the tube and add 100ul of sterile water to dissolve the DNA.
3. Close the tube and incubate for 10 minutes at room temperature.
4. Briefly vortex the tube and then do a quick spin (less than 5000xg) to concentrate the liquid at the bottom.
5. Store the suspended plasmid at -20°C. The DNA is stable for at least one year from date of shipping when stored at -20°C.

**RefSeq:** [NM\\_004615.2](#), [NP\\_004606.2](#)

**RefSeq Size:** 1813 bp

**RefSeq ORF:** 750 bp

**Locus ID:** 7102

**UniProt ID:** [P41732](#)

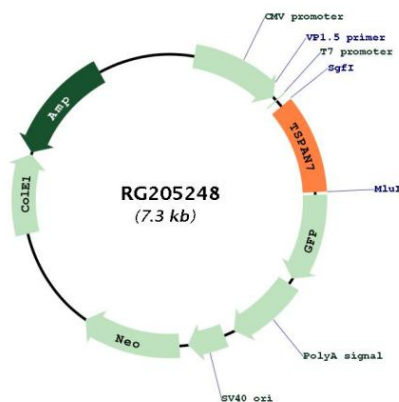
**Cytogenetics:** Xp11.4

**Domains:** transmembrane4

**Protein Families:** Druggable Genome, Transmembrane

**Gene Summary:** The protein encoded by this gene is a member of the transmembrane 4 superfamily, also known as the tetraspanin family. Most of these members are cell-surface proteins that are characterized by the presence of four hydrophobic domains. The proteins mediate signal transduction events that play a role in the regulation of cell development, activation, growth and motility. This encoded protein is a cell surface glycoprotein and may have a role in the control of neurite outgrowth. It is known to complex with integrins. This gene is associated with X-linked cognitive disability and neuropsychiatric diseases such as Huntington's chorea, fragile X syndrome and myotonic dystrophy. [provided by RefSeq, Jul 2008]

## Product images:



Circular map for RG205248