

Product datasheet for **RG205228**

KLHL11 (NM_018143) Human Tagged ORF Clone

Product data:

Product Type:	Expression Plasmids
Product Name:	KLHL11 (NM_018143) Human Tagged ORF Clone
Tag:	TurboGFP
Symbol:	KLHL11
Mammalian Cell Selection:	Neomycin
Vector:	pCMV6-AC-GFP (PS100010)
E. coli Selection:	Ampicillin (100 ug/mL)



[View online »](#)

**ORF Nucleotide
Sequence:**

>RG205228 representing NM_018143
 Red=Cloning site Blue=ORF Green=Tags(s)

TTTTGTAATACGACTCACTATAGGGCGGCCGGGAATTCGTCGACTGGATCCGGTACCGAGGAGATCTGCC
 GCC**CGCATCGC**C

ATGGCGGCTGCGGCAGTGGCGGCGCGGCGGCGGCGGCGGCTGCATCTCTTCAGGTACTGGAGATGG
 AGAGCATGGAGACGGCCCGCCGGCTCGGCAGGACTGGCCGCCGAGGTCCGAGGCAGCGGCACGGTGGA
 CTTGCGGCCTGGCCGGGGATCTCTGCAATGGAGGCGAGCGGGGCGATCCGGGCCAGAAAGCCGAGGAT
 TTCGAGTGCAGCTCTCACTGCTCAGAGCTGTCTGGCGGCAGAACGAGCAGCGGCCAGGGCCTCTTCT
 GCGACATTACCTGTGCTTCGGCGGGGCTGGAGGCCGCGAGTTCGGGCCACCGCTCGGTACTGGCTGC
 CGCCACCGAGTACTTCACGCCCTGTCTCGGGCCAGTTTCCGAGTCCCGCTCGGGACGGGTGGAGATG
 CGCAAGTGGAGTCCGAGCCGGGCCCCAACCAGACACAGTGAAGCCGTAATCGAGTACATGTACACCG
 GCGCATCCGCTCAGCACGGGCGAGTGCACGAGGTGCTGGAGTTGGCCGACAGGTTCTACTCATTTCG
 TTTAAAGAATTTGTGGAGAATTTCTCAAGAAAAAATTCATCTCTCAAATTGTGTGGCAATTCATAGC
 TTAGCACACATGTACACCTGAGCCAATCTGCTCTGAAGGCTGCTGATATGATACGGAGAAATTTCCACA
 AAGTGATTGAGGATGAAGAATTTATACGTTACCTTTCCATCTCATTAGAGACTGGCTTTGAGATTTGGA
 AATTACTGTTGATTCTGAAGAGTTCTCTTTGAAACCGTTTTGAAATGGGTTTCAGAGAAATGCTGAAGAG
 AGAGAGAGATACTTTGAAGAATTTTAAATTGCTCAGGTTGTCCAGATGAAACCTACCTACTCTC
 GACATGTCAAACCAGAGAGGCTGGTAGCCAATAATGAAGTTTGTGTCAAGTTGGTCGCTGACGCAGTGGA
 GAGACATGCTCTGAGAGCTGAGAATATACAATCTGGCAGATGCCAGCACCCCACTTCTCATGTGCTACTA
 TTGCTCGTTATGGGCAAAACATGGATGTGATCATGGTTATTGGAGGTGTGTGAGAAGGAGGGGACTATT
 TAAGTGAATGTGTGGGATATTTTGTGATGAGGACAGATGGGTAATCTGCCACATATTCATAATCACCT
 CGATGGACATGCTGTTGCAGTAACAGAATCCTACGTGTATGTTGCTGGATCAATGGAGCCAGGGTTTGCT
 AAAACTGTAGAAAGGTATAACCCAAATTTGAATACATGGGAACATGTTTGTAGTCTGATGACAAGAAAGC
 ATTCTTTTGGACTAACAGAAGTCAAAGGGAAGCTCTATAGCATTGGAGGACACGGCAACTTTAGTCCTGG
 TTTTAAAGATGTGACTGTTTATAATCCTGAGCTTGATAAATGGCACAACCTGGAATCGGCACCAAAGATT
 CTTGAGATGTCAAAGCACTAGCCATTGAAGACCGGTTTGTATACATTGCCGCCCGCACTCCTGTAGACC
 GGGACACTGAAGATGGATTAAAGGCTGTAATTACTTGCTATGATACAGAGACTCGACAGTGGCAAGATGT
 GGAATCTTTGCCGCTTATTGACAATTACTGCTTTTCCAAATGTCTGTGGTCAATTCAAACCTTTATCAG
 ACAGCATCATGTTGTCCAAGAGTTATTGTTTAGAAAACGAAGAGGCAGTAAGAAAAATTGCCAGCCAAG
 TGTCTGATGAGATCCTTGAAAGCTTGCCTCCAGAAGTCCTAAGCATCGAAGGAGCAGCCATTTGCTATTA
 CAAAGATGATGTCTTATTATAGGAGGCTGAAAAACAGTGATGATATTGATAAACAGTATCGGAAAGAA
 GCCTACCGATATTGTGCGGAGAGGAAGAGGTGGATGCTTCTTCTCCTATGCCACAACCTCGTTGTAGAG
 CCACTGCTTGTACGTGAGGATCCCGTACCGGTACTTGCATGGCACACAGAGATACCCTATGCCTCAAAA
 CCTGATGTGGCAGAAGGACCGCATCAGACAGATGCAAGAGATACATCGTCACGCCCTGAACATGAGGCGA
 GTGCCAAGCTCTCAGATTGAATGC

ACGCGTACGCGGCCGCTCGAG – GFP Tag – GTTTAA

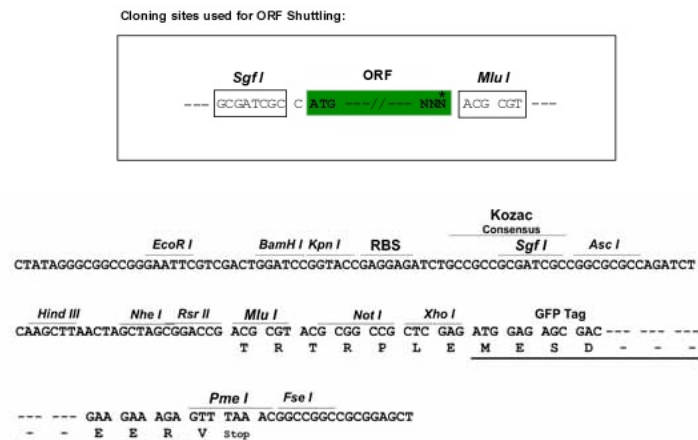
Protein Sequence: >RG205228 representing NM_018143
 Red=Cloning site Green=Tags(s)

MAAAVAAAAAAAAAASLQVLEMESMETAAAGSAGLAAEVRSGTVDFGPGPGISAMEASGGDPGPEAED
 FECSSHSEL SWRQNEQRRQGL FCDITL CFGGAGGREFRAHRSVLAATEYFTPLL SGQFSESRSGRVEM
 RKWSSEPGPEPDTVEAVIEYMYTGRI RVSTGSVHEVLELADRLLIRLKEFCGEFLKKKLHLSNCVAIHS
 LAHMYTLSQLALKAADMIRRNHFHKVIQDEEFYTL PPHLIRDWLSDEITVDSEEVLFETVLKWWQRNAEE
 RERYFEELFKLLRLSQMKPTYL TRHVKPERLVANNEVCVKLVADAVERHALRAENIQSGTCQHPTSHVSL
 LPRYGQNM DVIMVIGGVSEGGDYLSECVGYFVDEDRWVNLPHIHNHLDGHAVAVTESYVVYAGSMEPGFA
 KTVRYNP NLNTWEHVCSLMTRKHSFGLTEVKGKLYSIGGHGNFSPGFKDVTVYNPEL DKWHNLESAPKI
 LRDVKALAIEDRFVYIAARTPVDRDTEGLKAVITCYDTETRQWQDVESLPLIDNYCFFQM SVVNSNFYQ
 TASCCPKSYCLENEEAVRKIASQVSDEILESLPPEVLSIEGAAICYKDDVFIIGWKNSDDIDKQYRKE
 AYRYCAERKRWMLLPPMPQPRCRATACHVRIPYRYLHGTQRYPM PQNLMWQKDRIRQM QEIHRHALNMRR
 VPSSQIEC

TRTRPLE – GFP Tag – V

Restriction Sites: SgfI-MluI

Cloning Scheme:



ACCN: NM_018143

ORF Size: 2124 bp

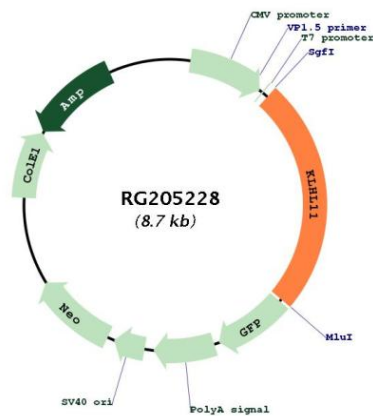
OTI Disclaimer: The molecular sequence of this clone aligns with the gene accession number as a point of reference only. However, individual transcript sequences of the same gene can differ through naturally occurring variations (e.g. polymorphisms), each with its own valid existence. This clone is substantially in agreement with the reference, but a complete review of all prevailing variants is recommended prior to use. [More info](#)

OTI Annotation: This clone was engineered to express the complete ORF with an expression tag. Expression varies depending on the nature of the gene.

Components: The ORF clone is ion-exchange column purified and shipped in a 2D barcoded Matrix tube containing 10ug of transfection-ready, dried plasmid DNA (reconstitute with 100 ul of water).

Reconstitution Method:	<ol style="list-style-type: none"> 1. Centrifuge at 5,000xg for 5min. 2. Carefully open the tube and add 100ul of sterile water to dissolve the DNA. 3. Close the tube and incubate for 10 minutes at room temperature. 4. Briefly vortex the tube and then do a quick spin (less than 5000xg) to concentrate the liquid at the bottom. 5. Store the suspended plasmid at -20°C. The DNA is stable for at least one year from date of shipping when stored at -20°C.
RefSeq:	<u>NM_018143.1, NP_060613.1</u>
RefSeq Size:	2326 bp
RefSeq ORF:	2127 bp
Locus ID:	55175
UniProt ID:	<u>Q9NVR0</u>
Cytogenetics:	17q21.2
Domains:	BTB, Kelch
Protein Families:	Secreted Protein
Gene Summary:	Component of a cullin-RING-based BCR (BTB-CUL3-RBX1) E3 ubiquitin-protein ligase complex that mediates the ubiquitination of target proteins, leading most often to their proteasomal degradation.[UniProtKB/Swiss-Prot Function]

Product images:



Circular map for RG205228