

Product datasheet for **RG205206**

TLL4 (NM_014640) Human Tagged ORF Clone

Product data:

Product Type: Expression Plasmids
Product Name: TLL4 (NM_014640) Human Tagged ORF Clone
Tag: TurboGFP
Symbol: TLL4
Mammalian Cell Selection: Neomycin
Vector: pCMV6-AC-GFP (PS100010)
E. coli Selection: Ampicillin (100 ug/mL)
ORF Nucleotide Sequence: >RG205206 representing NM_014640
Red=Cloning site Blue=ORF Green=Tags(s)

TTTTGTAATACGACTCACTATAGGGCGGCCGGAATTCGTCGACTGGATCCGGTACCGAGGAGATCTGCC
GCC**CGATCGCC**

ATGGCCTCAGCAGGAACACAGCACTATAGTATTGGCCTCCGCCAGAAAAGCAGCTTCAAGCAGAGTGGTC
CCTCAGGCACAGTACCTGCCACGCCACCTGAGAAAACCTCGGAGGGCAGAGTCTGGCCTCAGGCCATCA
GCAAGTGAAGCCAATCTGGAAGCTGGAAAAGAAGCAAGTGGAGACACTGTCAGCAGGGTTGGGCCAGGC
CTCTTGGGCGTCCCACCCAGCCAGCATATTTCTTTGCCCGAGCACTTATGTAGCTCTGGGACCAGG
CTGTCAATTGCAGGCCACAGCAGTTCCTGTTACCTACACTCTCTCCGGACTTGTTCAACAGCACCTGCT
ATACCGCCGCTCCAGCTATAGGCAAAAACCGTACCAGCAACTGGAGTCTTTCTGCTTGCCTTCGAGCCG
TCAGAAAAAGCCCTTTTCTCTCCCTCAAAGAGCCTCCCTGTCAGTCTCACTGCCAACAGGCCACTT
CTTCCATGGTCTTCTCCATGGCCAGCCCATGGCCTCCTCATCCACAGAACCATACTCTGCTTGGCAGC
GGCTGGGAAAACCTTCAGGGAAGAGCCTGGCCTCTGCCATCTCAGGGAAGATCCCATCTCCACTCTCT
TCCTCTATAAGCCCATGCTGAATAATAATTCTTCATGTGGCCAATAGCACGCCAGTGCCTTTATTGC
AGACCACACAGGGCCTGAAGCCAGTATCGCCACCAAGATCCAGCCTGTCTCTGGCATCATTAGGGGG
TACTGGAGACTGTGCACCGCAGCCTGTTGACCATAAGGTGCCAAAAGCATTGGCACTGTCCAGCTGAT
GCCAGTGCCCATATCGCCTTGTCTACCGCTAGCTCCCACGACACATCCACCACAGTGTTCCTCTTCT
GGTATAACCGGAATAACTTAGCCATGAGGGCAGAGCCACTTTCCTGTGCTCTGGATGACAGCTCTGATTC
CCAGGATCCAACCTAAGGAGATTCGGTTCCTGAGGCCGTGAGGAAATTGACCGCAAGAGGCTTTGAGAAG
ATGCCGAGGCAAGGCTGCCAGCTTGAACAGTCTAGTTTCTGAACCCAGCTTCCAGTGGAAATGCTCTCA
ACAGGAGCAGGGCGGTGAAAACCTCCTGCGGTAAATCAGCAGTTTCTCAGGAGGATGCTGGATCGGTGAG
GCGGGTCTCCCTGGTGCCTCAGATACCTTGGGTTGGACAATACAGTCTTCTGTACCAAGCGTATCAGC
ATTCACCTCCTTGCCATGCCAGTGGGCTCAATCACAAACCTGCCTGTGAATCTGTAATTGACTCCT
CAGCATTTGGAGAAGGCAAAGCTCCAGTCCCCCTTTTCTCAAACCTCTGGCATAGCCAACGTGGCCAC
CGCCTCTTTCCATCCAGCTGGCCAGTCTGAGAAGGAGAGACCTGAGGAGGCCAGGGAGCTGGACTCA
TCTGATAGGGATATTAGTTCAGCTACTGACCTCCAGCCAGATCAGGCTGAGACTGAAGATACAGAAGAAG
AACTAGTAGATAGTTTGAAGACTGTTGTGGCCGTGATGAGAATGAAGAGGAGGAGGGAGACTCAGAGTG



[View online >](#)

CTCCTCATTAAGTGTCTCTCCCCAGCGAATCGGTGGCCATGATCTCTAGAAGCTGTATGGAAATCTG
ACCAAACCCCTTTCCAATCATGAGAAAGTTGTCCGACCAGCCCTCATCTACAGTCTCTTTCCCAACGTTCC
CCCCTACCATCTATTTTGGCACTCGGGATGAGAGAGTGGAGAACTTCCCTGGGAACAGAGGAAGTTGCT
CCGATGGAAGATGAGCACAGTGACCCCCAACATTGTCAAGCAGACCATTGGACGGTCCCACCTTCAAATC
AGCAAAAGAAACGATGACTGGCTGGGCTGCTGGGGTACCACATGAAGTCTCCTAGTTCCGATCCATTC
GAGAGCATCAGAAGCTAAACCATTTCCAGGCTCATTCCAGATTGGGAGGAAGGACCCGGCTATGGCGGAA
CCTGTACGTATGCAGAGCCGCTTTGGCAAGAAGGAGTTCAGTTTCTTCCCCCAGTCTTTATCCTGCCC
CAGGACGCCAAGCTCCTGCGCAAAGCGTGGGAGAGCAGCAGCCGCCAAAAGTGGATTGTGAAGCCACCAG
CATCAGCTCGAGGCATTGGCATCCAGGTTATTCACAAGTGGAGTCAAGTCTCCCCAAGCGAAGGCCCTCCT
GGTACAGAGGTATCTACACAAACCTACCTCATCAGCGGCAGCAAGTTTGACCTGCGGATCTATGTTTAT
GTCACCTTCTACGATCTCTGCGGATTTACCTCTTTTCAGATGGACTGGTCCGCTTTGCCAGTTGCAAGT
ATTCGCTTCCATGAAGAGCCTTGGCAATAAGTTCATGCACCTGACCAACTACAGTGTCAATAAAAAAGAA
TGCCGAGTACCAGGCCAATGCAGATGAAATGGCTTCCAGGGCCACAAATGGGCACTGAAGGCTTTGTGG
AACTACCTGAGCCAGAAGGGAGTCAATAGCGACTCCATCTGGGAGAAGATAAAGGATGTTGTTGCAAAA
CTATCATCTCGTACAGCCCTATGTGACCAGCCTGCTCAAGATGTATGTGCGACGGCCCTATAGCTGCCA
TGAAGTCTTTGGTTTTGACATCATGCTAGACGAAAACCTCAAGCCCTGGGTCCTGGAAAGTCAACATTTCC
CCAAGCCTCCACTCCAGCTCTCCACTGGATATCAGCATCAAAGGCCAGATGATTCGTGACCTTCTGAATC
TGGCAGGTTTTGTCTGCCAATGCAGAGGATATCATTTCAGCCCCAGCAGCTGCAGCAGCTCCACCAC
CAGCCTGCCACCTCCCCTGGGGACAAATGTCGAATGGCTCCAGAGCATGTCACCTGCACAGAAGTGAAG
AAAGCCTATTATCTGACCCAGAAAATCCTGATCAGGACTTCTATGCATCTGTGCTGGATGTCCTGACAC
CAGATGATGTTTCGGATTCTGGTTGAGATGGAAGATGAGTTTTCTCGCCGTGGTCAGTTTGAACGAATTTT
TCCTTCTCATATCTCCTCTCGCTATCTCCGCTTTTTTGGCAGCCACGATATTTCAACATTTCTACCACC
CAATGGGAACAGAAATACCATGGCAACAAGCTTAAAGGAGTAGATCTGCTCCGGAGTTGGTGTACAAAG
GGTTCACATGGGAGTTGTCTCTGATTCTGCTCCAGTGTGGTCTCTCCCGACATCACTTCTGACTATCTC
AAAGGATGACGTGATACTCAATGCCTTCAGCAAATCAGAGACTAGCAAGCTGGGAAAAACAAGCTCCTGT
GAGGTTAGCCTACTACTCTGAAGACGGGACCACGCCAAATCCAAGAAGACTCAAGCTGGCCTCTCCC
CTTATCCCAGAAACCCAGTTCCCTCAAAGGACAGTGAGGACACCAGCAAAGAGCCAGCCTTTCTACCCA
GACGTTACCTGTGATCAAGTCTCTGGGACAGCTTCAAGACTTTCTGCTTCTCCACTTTCCAGTCAATC
AGTGACTCCCTCTGGCTGTGAGCCCA

ACGCGTACGCGGCCGCTCGAG - GFP Tag - GTTTAA

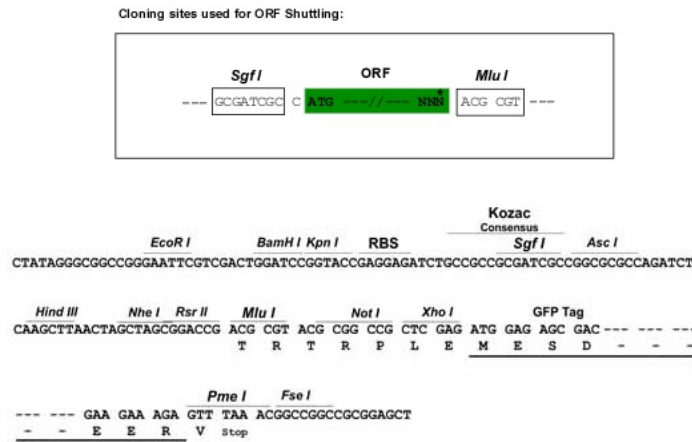
Protein Sequence: >RG205206 representing NM_014640
 Red=Cloning site Green=Tags(s)

MASAGTQHYSIGLRQKSSFKQSGPSGTVPATPPEKPSEGRVWPQAHQVVKPIWKLEKKQVETLSAGLGPG
 LLGVPPQPAYFFCPSTLCSSGTTAVIAGHSSCYLHSLPDLFNSTLLYRRSSYRQKPYQQLESFCLRSSP
 SEKSPFSLPQKSLPVSLTANKATSSMVFSMAQPMASSTEPYLCAAAAGENPSGKSLASAI SGKIPSPLS
 SSYKMLNNSFMWPNSTPVPLLQTTQGLKPVSPPKIQPVSWHHSGGTGDCAQPQVDHKVPKSI GTV PAD
 ASAHIALSTASSHDTSTTSVASSWYNRNLMRAEPLSCALDSSSDSQDPTKEIRFTEAVRKL TARGFEK
 MPRQGCQLEQSSFLNPSFQWNVLNRSRRWKPPAVNQFPQEDAGSVRRVLP GASDTLGLDNTVFCTKRIS
 IHLLASHASGLNHN PACESVIDSSAFGEKGAPGPPFPQTLGIANVATRLSSIQLGQSEKERPEEARELDS
 SDRDISSATDLQPDQAETEDTEEELVDSLEDCCGRDENEEEEEGDSECSLSAVSPSESVAMISRSCMEIL
 TKPLSNHEKVVRPALIYSLFPNVPTIYFGRDERVEKLPWEQRKLLRWKMSTVTPNIVKQTI GRSHFKI
 SKRNDWLGCWGHMKSFSFRSIREHQKLNHPGFSQIGRKDRLWRNLSRMQSRFGKKEFSFFPQSFILP
 QDAKLLRKAWESSRQKWIWKPPASARGIGIQVIHKWSQLPKRRPLL VQRYLHKPYLISGSKFDLRIYVY
 VTSYDPLRIYLFSDGLVRFASCKYSPSMKSLGNKFMHL TNYSVNKKNAEYQANADEMACQGHKWKALW
 NYLSQKGVNSDSIWEKIKDVVVKTIISSEPYVTSLLKMYVRRPYSCHELF GFDIMLDENLKPWVLEVNIS
 PSLHSSSPLDISIKGQMIRDLLNLAGFVLPNAEDIISSPSSCSSSTTSLPTSPGDKCRMAPEHVT AQKMK
 KAYYL TQKIPDQDFYASVLDVLPD D V R I L V E M E D E F S R R Q F E R I F P S H I S S R Y L R F F E Q P R Y F N I L T T
 QWEQKYHGKLGVDLLRSWCYKGFHMGVVSDSAPVWSLPTSLLTISKDDVILNAFSKSETSKLGKQSSC
 EVSLLLEDGTTPKSKTQAGLSPYPQKPSSSKDSEDTSKESLSTQTLPIKCSGQTSRLSASSTFQSI
 SDSLLAVSP

TRTRPLE - GFP Tag - V

Restriction Sites: SgfI-MluI

Cloning Scheme:

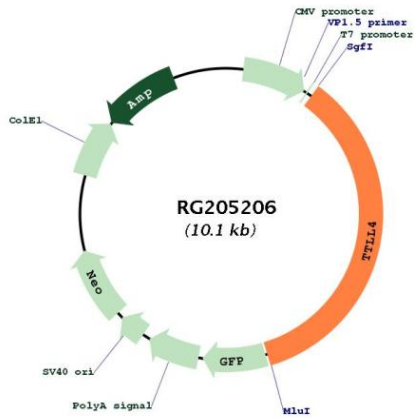


ACCN: NM_014640

ORF Size: 3597 bp

OTI Disclaimer:	<p>Due to the inherent nature of this plasmid, standard methods to replicate additional amounts of DNA in E. coli are highly likely to result in mutations and/or rearrangements. Therefore, OriGene does not guarantee the capability to replicate this plasmid DNA. Additional amounts of DNA can be purchased from OriGene with batch-specific, full-sequence verification at a reduced cost. Please contact our customer care team at custsupport@origene.com or by calling 301.340.3188 option 3 for pricing and delivery.</p> <p>The molecular sequence of this clone aligns with the gene accession number as a point of reference only. However, individual transcript sequences of the same gene can differ through naturally occurring variations (e.g. polymorphisms), each with its own valid existence. This clone is substantially in agreement with the reference, but a complete review of all prevailing variants is recommended prior to use. More info</p>
OTI Annotation:	<p>This clone was engineered to express the complete ORF with an expression tag. Expression varies depending on the nature of the gene.</p>
Components:	<p>The ORF clone is ion-exchange column purified and shipped in a 2D barcoded Matrix tube containing 10ug of transfection-ready, dried plasmid DNA (reconstitute with 100 ul of water).</p>
Reconstitution Method:	<ol style="list-style-type: none">1. Centrifuge at 5,000xg for 5min.2. Carefully open the tube and add 100ul of sterile water to dissolve the DNA.3. Close the tube and incubate for 10 minutes at room temperature.4. Briefly vortex the tube and then do a quick spin (less than 5000xg) to concentrate the liquid at the bottom.5. Store the suspended plasmid at -20°C. The DNA is stable for at least one year from date of shipping when stored at -20°C.
RefSeq:	NM_014640.3
RefSeq Size:	4208 bp
RefSeq ORF:	3600 bp
Locus ID:	9654
UniProt ID:	Q14679
Cytogenetics:	2q35
Domains:	TTL
Gene Summary:	<p>Glutamylase which preferentially modifies beta-tubulin and non-tubulin proteins, such as NAP1L1, NAP1L4 and CGAS. Involved in the side-chain initiation step of the polyglutamylation reaction rather than in the elongation step. Involved in formation of short side-chains. Mediates initiation of polyglutamylation of nucleosome assembly proteins NAP1L1 and NAP1L4. Also acts as a monoglutamylase: generates monoglutamylation of CGAS, leading to impair the nucleotidyltransferase activity of CGAS.[UniProtKB/Swiss-Prot Function]</p>

Product images:



Circular map for RG205206