

Product datasheet for **RG205173**

MANSC1 (NM_018050) Human Tagged ORF Clone

Product data:

Product Type:	Expression Plasmids
Product Name:	MANSC1 (NM_018050) Human Tagged ORF Clone
Tag:	TurboGFP
Symbol:	MANSC1
Synonyms:	9130403P13Rik; LOH12CR3
Mammalian Cell Selection:	Neomycin
Vector:	pCMV6-AC-GFP (PS100010)
E. coli Selection:	Ampicillin (100 ug/mL)
ORF Nucleotide Sequence:	>RG205173 representing NM_018050 Red=Cloning site Blue=ORF Green=Tags(s)

TTTTGTAATACGACTCACTATAGGGCGGCCGGAATTCGTCGACTGGATCCGGTACCGAGGAGATCTGCC
GCC**CGATCGCC**

ATGTTCTTCGGGGGAGAAGGGAGCTTGACTTACACTTTGGTAATAATTTGCTTCTGACACTAAGGCTGT
CTGCTAGTCAGAATTGCCTCAAAAAGAGCTAGAAGATGTTGTCATTGACATCCAGTCATCTTTCTAA
GGGAATCAGAGGCAATGAGCCATATACTTCAACTCAAGAAGACTGCATTAATTTCTTGCTGTTCAACA
AAAAACATATCAGGGGACAAAGCATGTAACCTTGATGATCTTCGACACTCGAAAAACAGCTAGACAACCCA
ACTGCTACCTATTTTTCTGTCCCAACGAGGAAGCCTGTCCATTGAAACCAGCAAAAGGACTTATGAGTTA
CAGGATAATTACAGATTTTCCATCTTTGACCAGAAATTTGCCAAGCCAAGAGTTACCCAGGAAGATTCT
CTCTTACATGGCCAATTTTCACAAGCAGTCACTCCCTAGCCCATCATCACAGATTATTCAAAGCCCA
CCGATATCTCATGGAGAGACACACTTTCTCAGAAGTTGGATCCTCAGATCACTTGGAGAAACTATTTAA
GATGGATGAAGCAAGTGCCAGCTCCTTGCTTATAAGGAAAAAGGCCATTCTCAGAGTTCACAATTTTCC
TCTGATCAAGAAATAGCTCATCTGCTGCCTGAAAATGTGAGTGCCTCCAGCTACGGTGGCAGTTGCTT
CTCCACATACCACCTCGGCTACTCAAAGCCCGCCACCCTTCTACCCACCAATGCTTCAGTGACACCTTC
TGGGACTTCCCAGCCACAGCTGGCCACCACAGCTCCACCTGTAACTGTCACCTTCTCAGCCTCCCAGC
ACCTCATTCTACAGTTTTTACACGGGCTGCGCTACACTCAAAGCAATGGCTACAACAGCAGTTCTGA
CTACCACCTTTCAGGCCTACGGACTCGAAAGGCAGCTTAGAAACCATACCGTTTTACAGAAATCTCCAA
CCTAACTTTGAACACAGGAATGTGTATAACCCTACTGCACTTTCTATGTCAAATGTGGAGTCTTCCACT
ATGAATAAAACTGCTTCTGGAAGGTAGGGAGGCCAGTCCAGGCAGTTCCTCCAGGGCAGTGTCCAG
AAAATCAGTACGGCCTTCCATTTGAAAAATGGCTTCTTATCGGGTCCCTGCTTTTTGGTGTCTGTCTCT
GGTATAGGCCTCGTCTCCTGGGTAGAATCCTCTCGAATCACTCCGCAGGAAACGTTACTCAAGACTG
GATTATTTGATCAATGGGATCTATGTGGACATC

ACGCGTACGCGGCCGCTCGAG - GFP Tag - GTTTAA



[View online »](#)

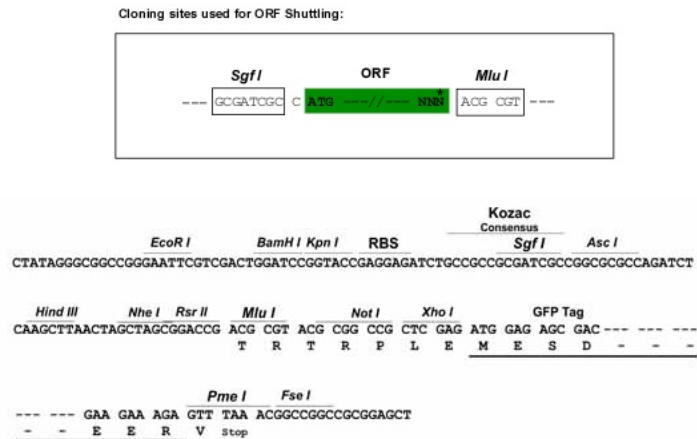
Protein Sequence: >RG205173 representing NM_018050
 Red=Cloning site Green=Tags(s)

MFFGGEGSLTYTLVIICFLTRLRLSASQNCLKKSLEDVVIDIQSSLSKGIKNEPIYTSTQEDCINSCCST
 KNISGDKACNLMIFDTRKTARQPNCYLFFCPNEEACPLKPAKGLMSYRIITDFPSLTRNLPSQELPQEDS
 LLHGQFSQAVTPLAHHTDYDKPTDISWRDTLSQKFGSSDHLEKLFKMDEASAQLLAYKEKGSQSSQFS
 SDQEIAHLLPENVSALPATVAVASPHHTSATPKPATLLPTNASVTPSGTSQPQLATTAPPVTTVTSQPPT
 TLIISTVFTRAAATLQAMATTAVLTTTFQAPTDSKGSLETIPFTEISNLTLNTGNVYNPTALSMSNVESST
 MNKTASWEGREASPGSSSQGSVPENQYGLPFKWLIIIGSLLFGVLFVIGLVLLGRILSESLRRKRYRSL
 DYLINGIYVDI

TRTRPLE – GFP Tag – V

Restriction Sites: SgfI-MluI

Cloning Scheme:



ACCN: NM_018050

ORF Size: 1293 bp

OTI Disclaimer: The molecular sequence of this clone aligns with the gene accession number as a point of reference only. However, individual transcript sequences of the same gene can differ through naturally occurring variations (e.g. polymorphisms), each with its own valid existence. This clone is substantially in agreement with the reference, but a complete review of all prevailing variants is recommended prior to use. [More info](#)

OTI Annotation: This clone was engineered to express the complete ORF with an expression tag. Expression varies depending on the nature of the gene.

Components: The ORF clone is ion-exchange column purified and shipped in a 2D barcoded Matrix tube containing 10ug of transfection-ready, dried plasmid DNA (reconstitute with 100 ul of water).

Reconstitution Method:

1. Centrifuge at 5,000xg for 5min.
2. Carefully open the tube and add 100ul of sterile water to dissolve the DNA.
3. Close the tube and incubate for 10 minutes at room temperature.
4. Briefly vortex the tube and then do a quick spin (less than 5000xg) to concentrate the liquid at the bottom.
5. Store the suspended plasmid at -20°C. The DNA is stable for at least one year from date of shipping when stored at -20°C.

RefSeq: [NM_018050.2](#), [NP_060520.2](#)

RefSeq Size: 2297 bp

RefSeq ORF: 1296 bp

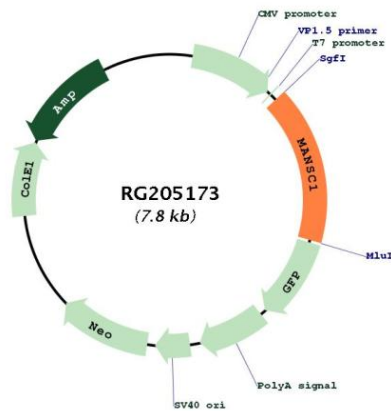
Locus ID: 54682

UniProt ID: [Q9H8J5](#)

Cytogenetics: 12p13.2

Protein Families: Transmembrane

Product images:



Circular map for RG205173