



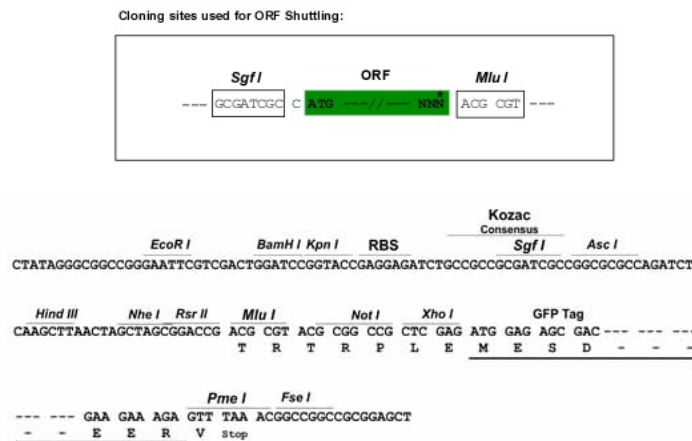
**Protein Sequence:** >RG205144 representing NM\_080626  
 Red=Cloning site Green=Tags(s)

MGARASGGPLARAGLLLLLLLLLLLLLGLLAPGAQGARGRGGAEKNSYRRTVNTFSQSVSSLFGEDNVRAAQ  
 KFLARLTERFVLGDMFVETLWKVWTELLDVLGLDVSNSLQYFSPASVSSSPARALLLVGVLLAYWFLS  
 LTLGFTFVSLHVVFGRFFWIVRVVLFMSVCVYILHKYEGEPENAVLPLCFVVAVYFMTGPMGFYWRSSPS  
 GPSNPSNPSVEEKLEHLEKQVRLLNIRLNRVLESLDRSKDK

TRTRPLE - GFP Tag - V

**Restriction Sites:** SgfI-MluI

**Cloning Scheme:**



**ACCN:** NM\_080626

**ORF Size:** 753 bp

**OTI Disclaimer:** The molecular sequence of this clone aligns with the gene accession number as a point of reference only. However, individual transcript sequences of the same gene can differ through naturally occurring variations (e.g. polymorphisms), each with its own valid existence. This clone is substantially in agreement with the reference, but a complete review of all prevailing variants is recommended prior to use. [More info](#)

**OTI Annotation:** This clone was engineered to express the complete ORF with an expression tag. Expression varies depending on the nature of the gene.

**Components:** The ORF clone is ion-exchange column purified and shipped in a 2D barcoded Matrix tube containing 10ug of transfection-ready, dried plasmid DNA (reconstitute with 100 ul of water).

**Reconstitution Method:**

1. Centrifuge at 5,000xg for 5min.
2. Carefully open the tube and add 100ul of sterile water to dissolve the DNA.
3. Close the tube and incubate for 10 minutes at room temperature.
4. Briefly vortex the tube and then do a quick spin (less than 5000xg) to concentrate the liquid at the bottom.
5. Store the suspended plasmid at -20°C. The DNA is stable for at least one year from date of shipping when stored at -20°C.

**RefSeq:** [NM\\_080626.6](#)

**RefSeq Size:** 1272 bp

**RefSeq ORF:** 756 bp

**Locus ID:** 140707

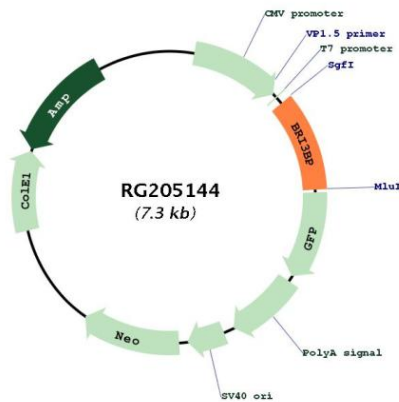
**UniProt ID:** [Q8WY22](#)

**Cytogenetics:** 12q24.31

**Protein Families:** Transmembrane

**Gene Summary:** Involved in tumorigenesis and may function by stabilizing p53/TP53.[UniProtKB/Swiss-Prot Function]

**Product images:**



Circular map for RG205144