

Product datasheet for **RG205116**

C9orf41 (CARNMT1) (NM_152420) Human Tagged ORF Clone

Product data:

Product Type: Expression Plasmids
Product Name: C9orf41 (CARNMT1) (NM_152420) Human Tagged ORF Clone
Tag: TurboGFP
Symbol: C9orf41
Synonyms: C9orf41; UPF0586
Mammalian Cell Selection: Neomycin
Vector: pCMV6-AC-GFP (PS100010)
E. coli Selection: Ampicillin (100 ug/mL)
ORF Nucleotide Sequence: >RG205116 representing NM_152420
 Red=Cloning site Blue=ORF Green=Tags(s)

TTTTGTAATACGACTCACTATAGGGCGGCCGGAATTCGTCGACTGGATCCGGTACCGAGGAGATCTGCC
 GCC**CGATCGCC**

ATGCAGCGACGGCGTCGCCCTCCGCCGCCACCTCCCGGCTGCCGAGGGCTGCGGGGGAGGAGCGGTG
 GCAGCGAGGAGGTGGAAGTGCAGTTTTCCGCCGGCGTTGGGGCTCGGCCGCGCGGTTTCGGCGGCAGC
 GCGCGGCCACGCGCAGCACCGAGGAGGAGGAGGAGGCTTGAGCGTGAGCACTTCTGGAAGATCATT
 AATGCCTCCGCTACTACGGCACCAGTATGCATGAGCGGGTGAACCGAACAGAAAGACAGTTTCGATCAC
 TTCCAGCTAACCAACAGAACTACTTCCCTCAGTTTCTTCTCACTTGACAAGATCCGGAATGCATTGA
 TCATAATCAAGAAATACTACTGACCATTGTGAATGATTGCATACATATGTTTGAAAATAAAGAAATGGA
 GAAGATGGGAATGAAAAGATTATGCCAGCATCTACATTTGACATGGATAAGTTAAAATCCACGCTGAAAC
 AGTTTGTGAGAGACTGGAGTGAACTGGGAAAGCAGAAAGGGATGCCTGTTACCAGCCAATCATTAAAGA
 AATTTTAAAAATTTTCCAAAAGAGAGATGGGATCCTTCTAAAGTAAATATTCTGGTACCTGGTCTGGA
 CTAGGAAGACTGGCCTGGGAAATAGCTATGCTAGGTTATGCTTGTCAAGGAAATGAATGGAGTTTTTTA
 TGCTCTTTTCTCCAACCTTGTACTCAACAGATGTTCTGAAATTAATAAATAAACTTTATCCTTGGAT
 CCATCAGTTTAGCAATAACCGGAGATCAGCTGATCAGATTCGACCCATCTTTTCCCTGATGTTGACCCC
 CACAGCTTCTCCTGGTTCTAACTTTTCTATGACAGCAGGAGATTTTCAAGAGATTTATTCAGAATGCA
 ATACCTGGGACTGTATTGCTACCTGTTTCTCATAGACACAGCTCACAATGTAATTGATTATATTGATAC
 AATATGAAAAATACTCAAGCCAGGTGGAATTTGGATAAATCTAGGTCCTGCTGTACCCTTTGAAAAAT
 CTGGCAATGAACTTTCCATAGAATTGAGCTATGAGGATATAAAAAACGTTGTTCTGCAGTATGGATTCA
 AGGTAGAGGTGAAAAAGAATCTGTATTGTCAACATATACTGTGAATGATCTCTATGATGAAATACTA
 CTATGAATGTGTCTTGTGTGGTCCGTAAGCCACAA

ACGCGTACGCGGCCGCTCGAG - GFP Tag - GTTTAA



[View online »](#)

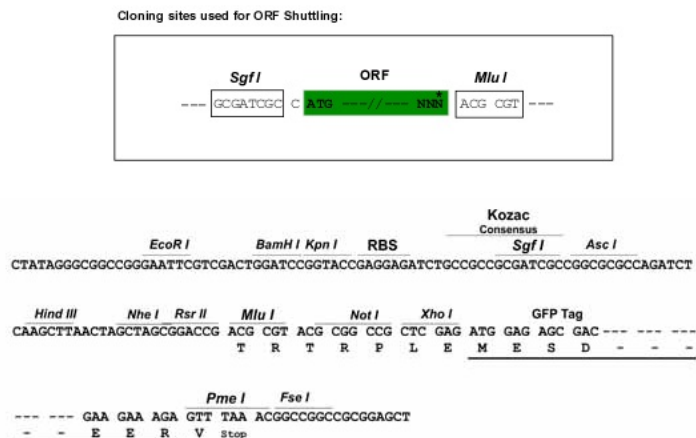
Protein Sequence: >RG205116 representing NM_152420
 Red=Cloning site Green=Tags(s)

MQRRRRPPPTSRLEPGCGGGGGSEEVQFSAGRWGSAAAVSAAAAAATRSTEEEEERLEREHFWKII
 NAFRYYGTSMHERVNRTERQFRSLPANQQKLLPQFLLHLDKIRKCIDHNQEILLTIVNDCIHMFFENKEYG
 EDGNGKIMPASTFMDMKLSTLKQFVRDWSSETGKAERDACYQPIIKEILKNFPERWDPKVNILVPGAG
 LGRLAWEIAMLGYACQGNWSFFMLFSSNFVLNRCSEINKYKLYPWIHQFSNNRRSADQIRPIFFPDVDP
 HSLPPGSNFSMTAGDFQEIYSECNTWDCIATCFFIDTAHNVIDYIDTIWKILKPGGIWINLGPLLYHFEN
 LANELSIELSYEDIKNVVLQYGFKVEVEKESVLSTYTVNDLSMMKYYYECVLFVVRKPKQ

TRTRPLE - GFP Tag - V

Restriction Sites: SgfI-MluI

Cloning Scheme:



ACCN: NM_152420

ORF Size: 1227 bp

OTI Disclaimer: The molecular sequence of this clone aligns with the gene accession number as a point of reference only. However, individual transcript sequences of the same gene can differ through naturally occurring variations (e.g. polymorphisms), each with its own valid existence. This clone is substantially in agreement with the reference, but a complete review of all prevailing variants is recommended prior to use. [More info](#)

OTI Annotation: This clone was engineered to express the complete ORF with an expression tag. Expression varies depending on the nature of the gene.

Components: The ORF clone is ion-exchange column purified and shipped in a 2D barcoded Matrix tube containing 10ug of transfection-ready, dried plasmid DNA (reconstitute with 100 ul of water).

Reconstitution Method:

1. Centrifuge at 5,000xg for 5min.
2. Carefully open the tube and add 100ul of sterile water to dissolve the DNA.
3. Close the tube and incubate for 10 minutes at room temperature.
4. Briefly vortex the tube and then do a quick spin (less than 5000xg) to concentrate the liquid at the bottom.
5. Store the suspended plasmid at -20°C. The DNA is stable for at least one year from date of shipping when stored at -20°C.

RefSeq: [NM_152420.3](#)

RefSeq Size: 2219 bp

RefSeq ORF: 1230 bp

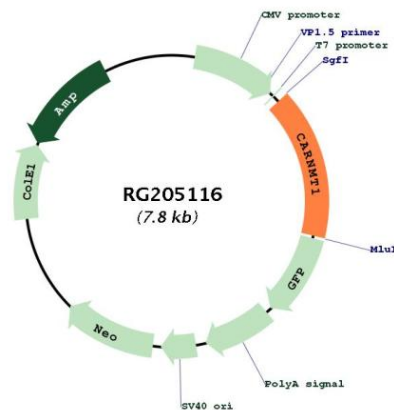
Locus ID: 138199

UniProt ID: [Q8N4J0](#)

Cytogenetics: 9q21.13

Gene Summary: The protein encoded by this gene is a methyltransferase that converts carnosine to anserine, a dipeptide found abundantly in skeletal muscle. The encoded protein can methylate other dipeptides as well. Three transcript variants encoding two different isoforms have been found for this gene. [provided by RefSeq, Feb 2016]

Product images:



Circular map for RG205116