

Product datasheet for **RG205089**

Endo G (ENDOG) (NM_004435) Human Tagged ORF Clone

Product data:

Product Type:	Expression Plasmids
Product Name:	Endo G (ENDOG) (NM_004435) Human Tagged ORF Clone
Tag:	TurboGFP
Symbol:	Endo G
Mammalian Cell Selection:	Neomycin
Vector:	pCMV6-AC-GFP (PS100010)
E. coli Selection:	Ampicillin (100 ug/mL)
ORF Nucleotide Sequence:	>RG205089 representing NM_004435 Red=Cloning site Blue=ORF Green=Tags(s)

TTTTGTAATACGACTCACTATAGGGCGGCCGGAATTCGTCGACTGGATCCGGTACCGAGGAGATCTGCC
GCC**CGATCGCC**

ATGCGGGCGCTGCGGGCCGGCCTGACCCTGGCGTTGGGCGCGGGGCTGGGTGCGGTGCTCGAGGGCTGGC
GGCGGGCGGGAGGACGCGGGCGGGCGCCGGGACTGCTGGGCCGGCTGCCCGTCTGCCCGTGGCGGC
GGCAGCCGAGTTGCCCTGTGCCCGGGGACCCCGGGCCGGGCGAGCTGGCCAAGTACGGGCTGCCG
GGGTGGCGCAGCTCAAGAGCCGCGAGTCGTACGTGCTGTGCTACGACCCGCGCACCCGCGCGCTCT
GGGTGGTGGAGCAGCTGCGACCCGAGCGTCTCCGCGGCAGCGGACCCGCGCGAGTGGACTTCCGCGA
GGACGACTCGGTGCACGGTACCACCGTCCACCAACCGCGACTACCGCGCAGTGGCTTCGACCGCGGT
CACCTGGCCGCCGCCAACCACCGCTGGAGCCAGAAGGCCATGGACGACACGTTCTACCTGAGCAACG
TCGCGCCCCAGGTGCCACCTCAACCAGAATGCCTGGAACAACCTGGAGAAATATAGCCGAGCTTGAC
CCGCGAGCTACAAAACGTCTATGTCTGCACAGGGCCACTTCTCCTGCCAGGACAGAGGCTGATGGGAAA
TCCTACGTAAAGTACCAGGTATCGGCAAGAACCAGTGGCAGTGCCACACACTTCTTCAAGGTGCTGA
TCCTGGAGGCAGCAGGTGGCAAATTGAGCTCCGCACCTACGTGATGCCAACGCACCTGTGGATGAGGC
CATCCCACTGGAGCGCTTCTGGTGCCATCGAGAGCATTGAGCGGGCTTCGGGGCTGCTTTTGCCCA
AACATCCTGGCGGGCAGGCAGCCTCAAGGCCATCACGGCGGGCAGTAAG

AG**CGGACCG**ACGCGTACGCGGCCGCTCGAG - GFP Tag - GTTTAA



[View online »](#)

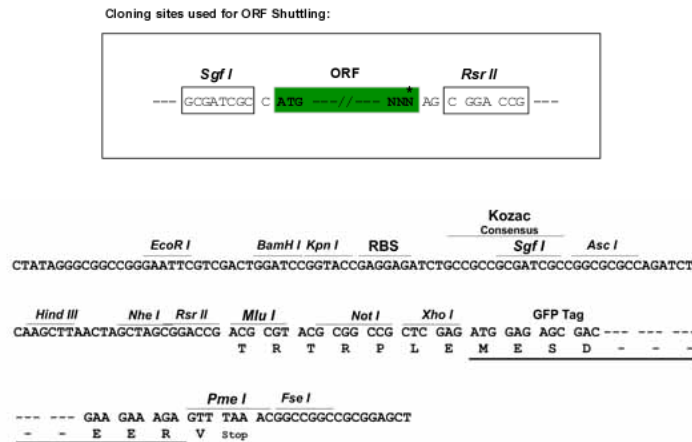
Protein Sequence: >RG205089 representing NM_004435
 Red=Cloning site Green=Tags(s)

MRALRAGLTLALGAGLGAVVEGWRRRRREDARAAPGLLGRLPVLPVAAAELPPVPGGPRGPGELAKYGLP
 GLAQLKSRESYVLCYDPRTRGALWVVEQLRPERLRGDGDRRECDFREDDSVHAYHRATNADYRGSGFDRG
 HLAAAAANHRWSQKAMDDTFYLSNVAPQVPHLNQNAWNLEKYSRSLTRSYQNYYVCTGPLFLPRTEADGK
 SYVKYQVIGKNHVAVPTHFFKVLILEAAGGQIELRITYVMPNAPVDEAIPLERFLVPIESIERASGLLFVP
 NILARAGSLKAITAGSK

SGPTRRRLE - GFP Tag - V

Restriction Sites: SgfI-RsrII

Cloning Scheme:



ACCN: NM_004435

ORF Size: 891 bp

OTI Disclaimer: The molecular sequence of this clone aligns with the gene accession number as a point of reference only. However, individual transcript sequences of the same gene can differ through naturally occurring variations (e.g. polymorphisms), each with its own valid existence. This clone is substantially in agreement with the reference, but a complete review of all prevailing variants is recommended prior to use. [More info](#)

OTI Annotation: This clone was engineered to express the complete ORF with an expression tag. Expression varies depending on the nature of the gene.

Components: The ORF clone is ion-exchange column purified and shipped in a 2D barcoded Matrix tube containing 10ug of transfection-ready, dried plasmid DNA (reconstitute with 100 ul of water).

Reconstitution Method:

1. Centrifuge at 5,000xg for 5min.
2. Carefully open the tube and add 100ul of sterile water to dissolve the DNA.
3. Close the tube and incubate for 10 minutes at room temperature.
4. Briefly vortex the tube and then do a quick spin (less than 5000xg) to concentrate the liquid at the bottom.
5. Store the suspended plasmid at -20°C. The DNA is stable for at least one year from date of shipping when stored at -20°C.

RefSeq: [NM_004435.2](#), [NP_004426.2](#)

RefSeq Size: 1145 bp

RefSeq ORF: 894 bp

Locus ID: 2021

UniProt ID: [Q14249](#)

Cytogenetics: 9q34.11

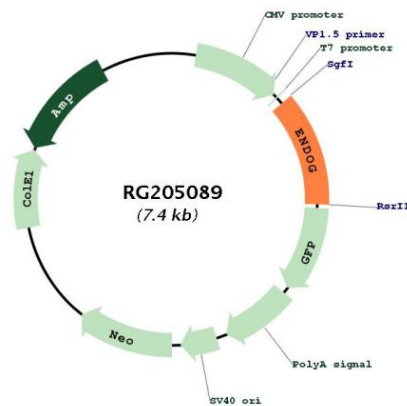
Domains: Endonuclease

Protein Families: Druggable Genome

Protein Pathways: Apoptosis

Gene Summary: The protein encoded by this gene is a nuclear encoded endonuclease that is localized in the mitochondrion. The encoded protein is widely distributed among animals and cleaves DNA at GC tracts. This protein is capable of generating the RNA primers required by DNA polymerase gamma to initiate replication of mitochondrial DNA. [provided by RefSeq, Jul 2008]

Product images:



Circular map for RG205089