

Product datasheet for **RG205041**

BTBD8 (NM_183242) Human Tagged ORF Clone

Product data:

Product Type:	Expression Plasmids
Product Name:	BTBD8 (NM_183242) Human Tagged ORF Clone
Tag:	TurboGFP
Symbol:	BTBD8
Synonyms:	BTB (POZ) domain containing 8; double BTB; OTTHUMP00000011945; POZ domain containing protein
Mammalian Cell Selection:	Neomycin
Vector:	pCMV6-AC-GFP (PS100010)
E. coli Selection:	Ampicillin (100 ug/mL)
ORF Nucleotide Sequence:	>RG205041 representing NM_183242 Red=Cloning site Blue=ORF Green=Tags(s)

TTTTGTAATACGACTCACTATAGGGCGGCCGGAATTCGTCGACTGGATCCGGTACCGAGGAGATCTGCC
GCC**CGATCGCC**

ATGGCTCGCTGTGGGAAGGCAGTGCGGCCCCATGGTACTTCTGGGGTCCGCTGGAGTTTGCAGTAAGG
GGTTGCAAAGGAAGGGCCGTGTGAGCGCGCCGGCTGAAGGCGACGGTGTGGAGCAGCTCAGCCAGGA
TTTGCTCAGGCTTCTAAGGGAAGAATTCATACAGATGTTACCTTCTGTGGTTGTACTTTGTTCAA
GCACACAAAGCAGTCCTTTAGCAAGAGTTCCTGACTTCTATTTTCATACTATTGGACAGACATCAAATA
GTTTAACAAATCAGGAGCCTATTGCTGTGGAGAATGTTGAAGCTTTAGAATTTAGAACGTTTTTACAGAT
TATATATTCATCAAACAGAAACATAAAAACTATGAAGAGGAAATTCCTAGGAAAAAGATAATGGAGATT
GGGATATCACAAAAGCAACTTGACATCAGTTTTCCAAAGTGTGAAAACCTCATCTGATTGTTCTCTCAGA
AGCATGAAATTCAGAGGATATCAGTGACAGAGATGATGATTTCAATTCATGATAATTGACTTGGA
GCCTGCATCTGAATTAGGAGAAGATTTATTGAAGCTTTATGTGAAACCTGGTTGCCAGATATTGATATT
TTTGTTGATGGAAAACGTTTTAAAGCTCACAGGGCCATTTGAGTGCCAGATCTAGTTATTTTGCTGCAA
TGCTGAGTGGCTGTTGGGCTGAAAGCTCCCAAGAGTACGTTACTCTTCAAGGTATAAGCCATGTAGAACT
GAATGTTATGATGCATTTTATATATGGAGGAACCTGGACATTCAGACAAAACCTAATGTTGGTCAGATA
CTCAATATGGCTGATATGATGGACTAGAAGGATTAAGAAGTAGCAATCTATATTTAAGAAGAGATT
ACTGTAATTTCTTTCAGAAGCCTGTTCCAGAACATTGACGTCTATACTAGAATGCCTGATTATTGCTCA
TTCAGTTGGAGTGGAAAGTCTTTTTGCTGACTGCATGAAGTGGATTGTAAGCATTGCAAGTTTTGG
TCTGAGAGAAGCTTTGCAAATATACCTCCTGAGATTCAGAAAAGTTGTCTTAATATGTTGATTGATCAGTCT
TAGTAAATATAACC

ACGCGTACGCGGCCGCTCGAG - GFP Tag - GTTTAA



[View online >](#)

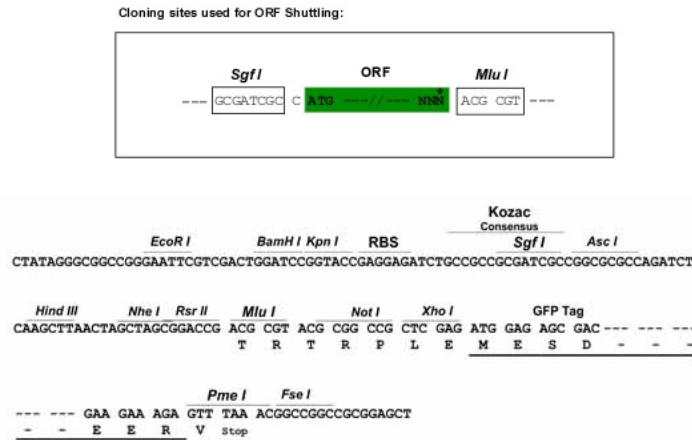
Protein Sequence: >RG205041 representing NM_183242
Red=Cloning site Green=Tags(s)

MARCGECSAAPMVLLGSAGVCSKGLQRKGPCERRRLKATVSEQLSQDLLRLLREEFHTDVTFSVGCTLFK
 AHKAVLLARVPDFYFHTIGQTSNSLTNQEP IAVENVEALEFRFTLQIIYSSNRNIKNYEEEEILRKKIMEI
 GISQKQLDISFPKCENSSDCSLQKHEIPEDISDRDDDFISNDNYDLEPA SELGEDLLKLYVKPGCPDIDI
 FVDGKRFKAHRAIL SARSSYFAAML SGCWAESSQEYVTLQGISHV ELNVMMHF IYGGTLDIPDKTNVQGI
 LNMADMYGLEGLKEVAIYLRRDYCNFFQKPVPRTLT SILECLI IAH SVGVE SLF ADCMKWIVKHF ARFW
 SERSFANIPPEIQK SCLNMLIQSLVNIT

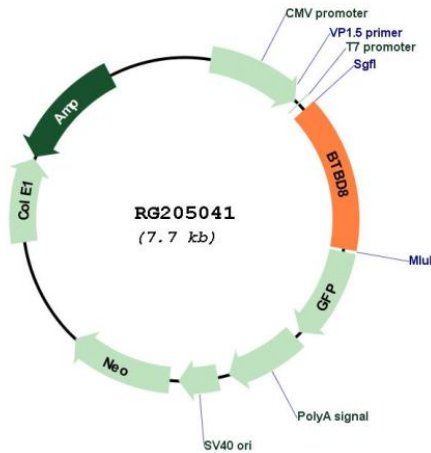
TRTRPLE - GFP Tag - V

Restriction Sites: SgfI-MluI

Cloning Scheme:



Plasmid Map:



ACCN: NM_183242

ORF Size:	1134 bp
OTI Disclaimer:	The molecular sequence of this clone aligns with the gene accession number as a point of reference only. However, individual transcript sequences of the same gene can differ through naturally occurring variations (e.g. polymorphisms), each with its own valid existence. This clone is substantially in agreement with the reference, but a complete review of all prevailing variants is recommended prior to use. More info
OTI Annotation:	This clone was engineered to express the complete ORF with an expression tag. Expression varies depending on the nature of the gene.
Components:	The ORF clone is ion-exchange column purified and shipped in a 2D barcoded Matrix tube containing 10ug of transfection-ready, dried plasmid DNA (reconstitute with 100 ul of water).
Reconstitution Method:	<ol style="list-style-type: none">1. Centrifuge at 5,000xg for 5min.2. Carefully open the tube and add 100ul of sterile water to dissolve the DNA.3. Close the tube and incubate for 10 minutes at room temperature.4. Briefly vortex the tube and then do a quick spin (less than 5000xg) to concentrate the liquid at the bottom.5. Store the suspended plasmid at -20°C. The DNA is stable for at least one year from date of shipping when stored at -20°C.
RefSeq:	NM_183242.2
RefSeq Size:	1438 bp
RefSeq ORF:	1137 bp
Locus ID:	284697
Cytogenetics:	1p22.1
Gene Summary:	Involved in clathrin-mediated endocytosis at the synapse. Plays a role in neuronal development and in synaptic vesicle recycling in mature neurons, a process required for normal synaptic transmission.[UniProtKB/Swiss-Prot Function]