

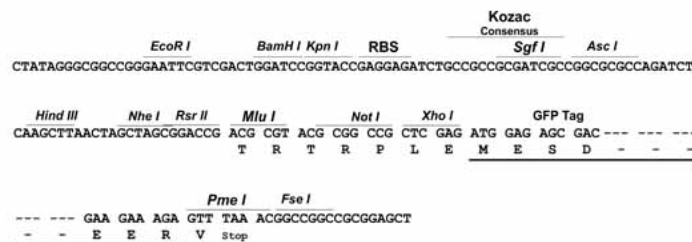
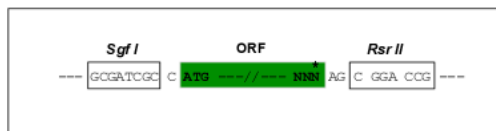
## Product datasheet for **RG205028**

### SDF4 (NM\_016176) Human Tagged ORF Clone

#### Product data:

Product Type:	Expression Plasmids
Product Name:	SDF4 (NM_016176) Human Tagged ORF Clone
Tag:	TurboGFP
Symbol:	SDF4
Synonyms:	Cab45; SDF-4
Mammalian Cell Selection:	Neomycin
Vector:	pCMV6-AC-GFP (PS100010)
E. coli Selection:	Ampicillin (100 ug/mL)
Restriction Sites:	Sgfl-RsrII
Cloning Scheme:	

Cloning sites used for ORF Shutting:



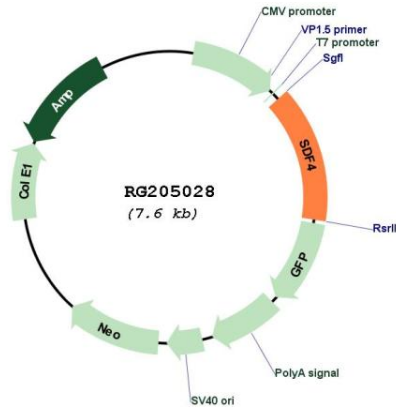
ACCN:	NM_016176
ORF Size:	1086 bp



[View online >](#)

<b>OTI Disclaimer:</b>	The molecular sequence of this clone aligns with the gene accession number as a point of reference only. However, individual transcript sequences of the same gene can differ through naturally occurring variations (e.g. polymorphisms), each with its own valid existence. This clone is substantially in agreement with the reference, but a complete review of all prevailing variants is recommended prior to use. <a href="#">More info</a>
<b>OTI Annotation:</b>	This clone was engineered to express the complete ORF with an expression tag. Expression varies depending on the nature of the gene.
<b>Components:</b>	The ORF clone is ion-exchange column purified and shipped in a 2D barcoded Matrix tube containing 10ug of transfection-ready, dried plasmid DNA (reconstitute with 100 ul of water).
<b>Reconstitution Method:</b>	<ol style="list-style-type: none"><li>1. Centrifuge at 5,000xg for 5min.</li><li>2. Carefully open the tube and add 100ul of sterile water to dissolve the DNA.</li><li>3. Close the tube and incubate for 10 minutes at room temperature.</li><li>4. Briefly vortex the tube and then do a quick spin (less than 5000xg) to concentrate the liquid at the bottom.</li><li>5. Store the suspended plasmid at -20°C. The DNA is stable for at least one year from date of shipping when stored at -20°C.</li></ol>
<b>RefSeq:</b>	<a href="#">NM_016176.3</a> , <a href="#">NP_057260.2</a>
<b>RefSeq Size:</b>	2051 bp
<b>RefSeq ORF:</b>	1068 bp
<b>Locus ID:</b>	51150
<b>UniProt ID:</b>	<a href="#">Q9BRK5</a>
<b>Cytogenetics:</b>	1p36.33
<b>Domains:</b>	EFh
<b>Protein Families:</b>	Transmembrane
<b>Gene Summary:</b>	This gene encodes a stromal cell derived factor that is a member of the CREC protein family. The encoded protein contains six EF-hand motifs and calcium-binding motifs. This protein localizes to the Golgi lumen and may be involved in regulating calcium dependent cellular activities. [provided by RefSeq, Sep 2011]

Product images:



Circular map for RG205028