

Product datasheet for **RG204986**

RNF126 (NM_194460) Human Tagged ORF Clone

Product data:

Product Type:	Expression Plasmids
Product Name:	RNF126 (NM_194460) Human Tagged ORF Clone
Tag:	TurboGFP
Symbol:	RNF126
Mammalian Cell Selection:	Neomycin
Vector:	pCMV6-AC-GFP (PS100010)
E. coli Selection:	Ampicillin (100 ug/mL)
ORF Nucleotide Sequence:	>RG204986 representing NM_194460 Red=Cloning site Blue=ORF Green=Tags(s)

TTTTGTAATACGACTCACTATAGGGCGGCCGGAATTCGTCGACTGGATCCGGTACCGAGGAGATCTGCC
GCC**CGATCGCC**

ATGGCCGAGGCGTCGCCGATCCCGACGGTACTTCTGCCACTGCTGCTCCGTGGAGATCGTCCCGCGCC
TGCCGGATTATATCTGTCCAAGATGCGAGTCTGGTTTTATCGAGGAGCTTCCGGAAGAGACCAGGAGCAC
AGAAAAATGGTTCTGCCCCCTCCACAGCTCCACAGACCAGAGCCGGCCACCGCTGGAGCACGTGGACCAG
CACCTGTTACGCTGCCGAGGGCTACGGACGTTTGTTCGGCATCTTCGATGACAGCTTCGAGATCC
CCACGTTCCCTCCTGGGGCGCAGGCTGACGACGGCAGGGACCTGAGAGCCGGCGGGAGAGACCATCC
GTCCCGGCACCGGTACGGCGCCGACAGCCCCGCGCCGCTCACACGCGGGCGGCCACCGCCGGCAC
GAAGGCGTCCCCACGCTGGAAGGGATCATCCAGCAGCTCGTCAACGGCATCATCACGCCGCCACCATCC
CCAGCCTGGGCCCTGGGGAGTCTGCACTCAAACCTATGGACTACGCCTGGGGGGCCAACGGCCTGGA
TGCCATCATCACAGCTCCTCAATCAGTTTAAAAACACAGGCCCCCCACCGGCAGATAAAGAGAAAATC
CAGGCCCTCCCCACCGTCCCCGTCAGTGGAGCAGCTAGGCTCCGGGCTCGAGTGCCCTGTGTCAAGG
ACGACTACGCGCTGGGTGAGCGTGTGCGGCAGTGCCTGCAACCACCTGTTCCACGACGGCTGCATCGT
GCCCTGGCTGGAGCAGCAGACAGCTGCCCGTCTGCCAAAAAGCCTCACGGGACAGAACCGGCCACG
AACCCCTGGCCTCACTGGGGTGAAGTCTCCTCCTCGTCATCGTCTCCTCCAGCTCGCCAGCA
ACGAGAACGCCACAAGCAACTCG

ACGCGTACGCGGCCGCTCGAG - GFP Tag - GTTTAA



[View online »](#)

Protein Sequence: >RG204986 representing NM_194460
Red=Cloning site Green=Tags(s)

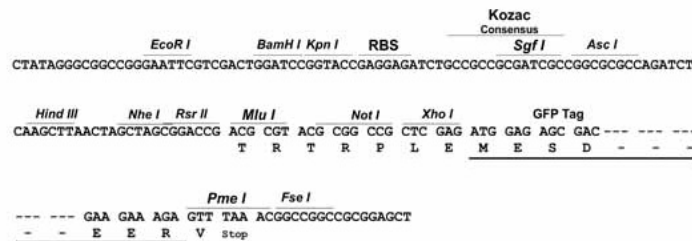
MAEASPHPGRYFCHCCSVEIVPRLPDYICPRCESGFIEELPEETRSTENGSA
 PSTAPTDQSRPPLEHVDQHLFTLPQGYGQFAFGIFDDSEIPTFP
 PGAQADDGRDPESRRERDHP
 SRHRYGARQPRARLTT
 RRATGRHEGVPTLEGIIQQLVNGIITPATIP
 SLGPWGVLHSNPMDYAWGANGLDA
 IITQLLNQFENTGPPPADKEKI
 QALPTVPVTEEHVGSLECPVCKDDYAL
 GERVRQLPCNHLFHDGCIVPWLE
 QHDSCPVCRKSLTGQNTAT
 NPPGLTGVSFSSSSSSSSSSSP
 NENATSNS

TRTRPLE - GFP Tag - V

Restriction Sites: SgfI-MluI

Cloning Scheme:

Cloning sites used for ORF Shuttling:



ACCN: NM_194460

ORF Size: 933 bp

OTI Disclaimer: The molecular sequence of this clone aligns with the gene accession number as a point of reference only. However, individual transcript sequences of the same gene can differ through naturally occurring variations (e.g. polymorphisms), each with its own valid existence. This clone is substantially in agreement with the reference, but a complete review of all prevailing variants is recommended prior to use. [More info](#)

OTI Annotation: This clone was engineered to express the complete ORF with an expression tag. Expression varies depending on the nature of the gene.

Components: The ORF clone is ion-exchange column purified and shipped in a 2D barcoded Matrix tube containing 10ug of transfection-ready, dried plasmid DNA (reconstitute with 100 ul of water).

Reconstitution Method:

1. Centrifuge at 5,000xg for 5min.
2. Carefully open the tube and add 100ul of sterile water to dissolve the DNA.
3. Close the tube and incubate for 10 minutes at room temperature.
4. Briefly vortex the tube and then do a quick spin (less than 5000xg) to concentrate the liquid at the bottom.
5. Store the suspended plasmid at -20°C. The DNA is stable for at least one year from date of shipping when stored at -20°C.

RefSeq: [NM_194460.1](#), [NP_919442.1](#)

RefSeq Size: 1658 bp

RefSeq ORF: 936 bp

Locus ID: 55658

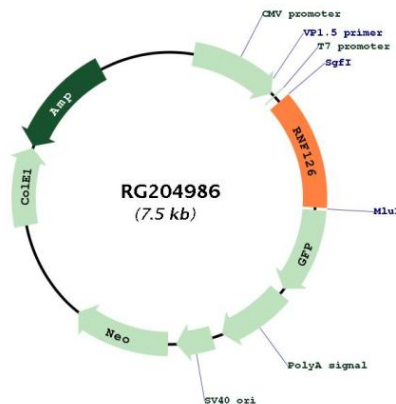
UniProt ID: [Q9BV68](#)

Cytogenetics: 19p13.3

Protein Families: Druggable Genome

Gene Summary: The protein encoded by this gene contains a RING finger domain, a motif present in a variety of functionally distinct proteins and known to be involved in protein-protein and protein-DNA interactions. [provided by RefSeq, Jul 2008]

Product images:



Circular map for RG204986