

## Product datasheet for **RG204962**

### **PCTAIRE1 (CDK16) (NM\_033018) Human Tagged ORF Clone**

#### **Product data:**

Product Type:	Expression Plasmids
Product Name:	PCTAIRE1 (CDK16) (NM_033018) Human Tagged ORF Clone
Tag:	TurboGFP
Symbol:	CDK16
Synonyms:	PCTAIRE; PCTAIRE1; PCTGAIRE; PCTK1
Mammalian Cell Selection:	Neomycin
Vector:	pCMV6-AC-GFP (PS100010)
E. coli Selection:	Ampicillin (100 ug/mL)



[View online »](#)

**ORF Nucleotide Sequence:**

>RG204962 representing NM\_033018  
 Red=Cloning site Blue=ORF Green=Tags(s)

TTTTGTAATACGACTCACTATAGGGCGGCCGGAATTCGTCGACTGGATCCGGTACCGAGGAGATCTGCC  
 GCC**CGGATCGCC**

ATGGATCGGATGAAGAAGATCAAACGGCAGCTGTCAATGACACTCCGAGGTGGCCGAGGCATAGACAAGA  
 CCAATGGTGCCCTGAGCAGATAGGCCTGGATGAGAGTGGTGGTGGCGCAGTGACCCTGGAGAGGC  
 CCCACACGTGCTCCTGGGGAATTCTGTTCTGCACGGGGCCCACTCAGCTCTGCACCAGAGATTGTG  
 CACGAGGACTTGAAGATGGGGTCTGATGGGGAGAGTGACCAGGCTTACGCCACGTCCTCGGATGAGGTGC  
 AGTCTCCAGTGAGAGTGCATGCGCAACCATCCCCACGAAGATCTCCACTGAGGACATCAACAAGCG  
 CCTACTACTACCAGTGACATCCGGCTGCCTGAGGGCTACCTGGAGAAGCTGACCCTCAATAGCCCCATC  
 TTTGACAAAGCCCTCAGCCGCCCTCCGTCGTGTCAGCCTATCTGAGATTGGCTTTGGGAACTGGAGA  
 CCTACATTAAGCTGGACAACTGGCGAGGGTACCTATGCCACCGTCTACAAAGGCAAAAGCAAGCTCAC  
 AGACAACCTTGTGGCACTCAAGGAGATCAGACTGGAACATGAAGAGGGGGCACCTGCACCGCCATCCGG  
 GAAGTGTCCCTGCTCAAGGACCTCAAACACGCCAACATCGTTACGCTACATGACATTATCCACACGGAGA  
 AGTCCCTCACCTTGTCTTTGAGTACCTGGACAAGGACCTGAAGCAGTACCTGGATGACTGTGGGAACAT  
 CATCAACATGCACAACGTGAAACTGTTCTGTTCCAGTGTCTCCGTGGCCTGGCCTACTGCCACCGGCAG  
 AAGGTGTACACCGAGACCTCAAGCCCCAGAACCTGCTCATCAACGAGAGGGGAGAGCTCAAGCTGGCTG  
 ACTTTGGCCTGGCCGAGCCAAGTCAATCCCAACAAGACATACTCCAATGAGGTGGTGACTGTGGTA  
 CCGGCCCTGACATCCTGCTGGGTCCACGACTACTCCACTCAGATTGACATGTGGGGTGTGGGCTGC  
 ATCTTCTATGAGATGGCCACAGCCGCTCCCTCTTTCCGGGCTCCACGGTGGAGGAACAGCTACACTTCA  
 TCTTCCGTATCTTAGGAACCCAACTGAGGAGACGTGGCCAGGCATCTGTCCAACGAGGAGTTCGAAG  
 ATACAACACCCCAAGTACCGAGCCGAGGCCCTTTTGGCCACGCACCCGACTTGATAGCGACCGGGGCC  
 GACCTCCTACCAAGCTGTTGCAGTTTGGGGTGAATCGGATCTCCGAGAGGATGCCATGAAACATC  
 CATTCTTCTCAGTCTGGGGGAGCGGATCCACAACTTCTGACACTACTTCCATATTTGCACTAAAGGA  
 GATTACAGTACAAAGGAGGCCAGCCTTCGGTCTTCGTCGATGCCTGACTCAGGCAGGCCAGCTTCCCG  
 GTGGTGGACACCGAGTTC

**ACGCGTACGCGGCCGCTCGAG** - GFP Tag - GTTTAA

**Protein Sequence:**

>RG204962 representing NM\_033018  
 Red=Cloning site Green=Tags(s)

MDRMKKIKRQLSMTLRGGRGIDKTNGAPEQIGLDESGGGGSDPGEAPTRAAPGELRSARGPLSSAPEIV  
 HEDLKMGSQDQASATSSDEVQSPVVRVVRMRNHPPRKISTEDINKRLSLPADIRLPEGYLEKLTLSNPI  
 FDKPLSRRLRRVSLSEIGFGKLETYIKLDKLGEGTYATVYKGSKSLTDNLVALKEIRLEHEEGAPCTAIR  
 EVSLLKDLKHANIVTLHDIHTEKSLTLVFEYLDKDLKQYLDCCGNIINMHNVKLFLFQLLRGLAYCHRQ  
 KVLHRDLKPQNLINERGELKLADFLARAKSIPTKYSNEVVTLYWRPPDILLGSTDYSTQIDMWGVGC  
 IFYEMATGRPLFPGSTVEEQLHFIFRILGTPTEETWPGILSNEEFKTYNYPKYRAEALLSHAPRLSDGA  
 DLLTKLLQFEGRNRISAEDAMKHPFFLSLGERIHKLPDTSIFALKEIQLQKEASLRSSMPDSGRPAFR  
 VVDETF

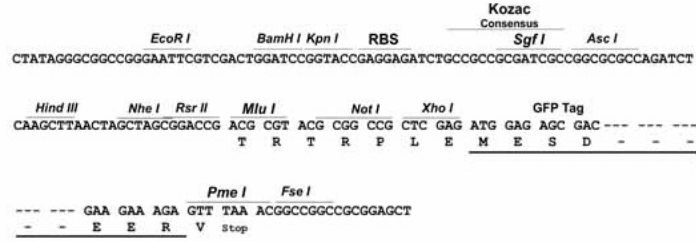
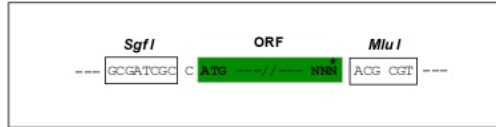
**TRTRPLE** - GFP Tag - V

**Restriction Sites:**

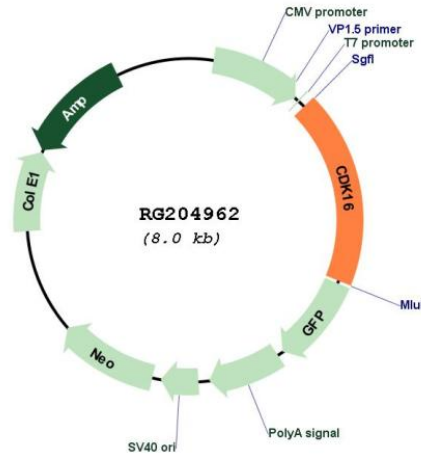
Sgfl-Mlul

Cloning Scheme:

Cloning sites used for ORF Shutting:



Plasmid Map:



ACCN: NM\_033018

ORF Size: 1488 bp

OTI Disclaimer: The molecular sequence of this clone aligns with the gene accession number as a point of reference only. However, individual transcript sequences of the same gene can differ through naturally occurring variations (e.g. polymorphisms), each with its own valid existence. This clone is substantially in agreement with the reference, but a complete review of all prevailing variants is recommended prior to use. [More info](#)

OTI Annotation: This clone was engineered to express the complete ORF with an expression tag. Expression varies depending on the nature of the gene.

Components: The ORF clone is ion-exchange column purified and shipped in a 2D barcoded Matrix tube containing 10ug of transfection-ready, dried plasmid DNA (reconstitute with 100 ul of water).

<b>Reconstitution Method:</b>	<ol style="list-style-type: none"><li>1. Centrifuge at 5,000xg for 5min.</li><li>2. Carefully open the tube and add 100ul of sterile water to dissolve the DNA.</li><li>3. Close the tube and incubate for 10 minutes at room temperature.</li><li>4. Briefly vortex the tube and then do a quick spin (less than 5000xg) to concentrate the liquid at the bottom.</li><li>5. Store the suspended plasmid at -20°C. The DNA is stable for at least one year from date of shipping when stored at -20°C.</li></ol>
<b>RefSeq:</b>	<a href="#">NM_033018.2</a> , <a href="#">NP_148978.1</a>
<b>RefSeq Size:</b>	3172 bp
<b>RefSeq ORF:</b>	1509 bp
<b>Locus ID:</b>	5127
<b>UniProt ID:</b>	<a href="#">Q00536</a>
<b>Cytogenetics:</b>	Xp11.3
<b>Domains:</b>	pkinase, TyrKc, S_TKc
<b>Protein Families:</b>	Druggable Genome, Protein Kinase
<b>Gene Summary:</b>	The protein encoded by this gene belongs to the cdc2/cdkx subfamily of the ser/thr family of protein kinases. It may play a role in signal transduction cascades in terminally differentiated cells; in exocytosis; and in transport of secretory cargo from the endoplasmic reticulum. This gene is thought to escape X inactivation. Alternative splicing results in multiple transcript variants encoding different isoforms. [provided by RefSeq, Dec 2009]