

Product datasheet for **RG204961**

FLCN (NM_144606) Human Tagged ORF Clone

Product data:

Product Type:	Expression Plasmids
Product Name:	FLCN (NM_144606) Human Tagged ORF Clone
Tag:	TurboGFP
Symbol:	FLCN
Synonyms:	BHD; DENND8B; FLCL
Mammalian Cell Selection:	Neomycin
Vector:	pCMV6-AC-GFP (PS100010)
E. coli Selection:	Ampicillin (100 ug/mL)
ORF Nucleotide Sequence:	>RG204961 representing NM_144606 Red=Cloning site Blue=ORF Green=Tags(s)

TTTTGTAATACGACTCACTATAGGGCGGCCGGAATTCGTCGACTGGATCCGGTACCGAGGAGATCTGCC
GCC**CGATCGCC**

ATGAATGCCATCGTGGCTCTCTGCCACTTCTGCGAGCTCCACGGCCCCGCACTCTTTCTGCACGGAGG
TGCTGCACGCCCCACTTCTCAAGGGGATGGGAATGAGGACAGTCCTGGCCAGGGTGAGCAGGCGGAAGA
AGAGGAAGGTGGCATTGAGTGAACAGTCGGATGCGTGCGCACAGCCCCGAGAGGGGGCCAGCGTCGAG
TCCAGCAGCCCCGGGGCCAAAAAGTCGGACATGTGCGAGGGCTGCCGGTCACTTGTGCAGGGCACCCGG
GATATATCAGCCATGATAAAGAGACCTCCATTAATACGTCAGCCACCAGCACCCAGCCACCCAGCT
CTTCAGCATTGTCCGCCAGGCCTGTGTCCGGAGCCTGAGCTGTGAGGTCTGCCCTGGCCGTGAAGGCCCC
ATCTTCTTCGGAGATGAGCAGCACGGCTTTGTGTTTCAGCCACACCTTCTTCATCAAGGACAGCCTGGCCA
GGGGCTTCACAGCCTGGTACAGCATCATCACCATCATGATGGACCGGATCTACCTCATCAACTCCTGGCC
CTTCTGCTGGGGAAGTCCGGGGAATCATCGATGAGCTCCAGGGCAAGGCGCTCAAGGTGTTTGAGGCA
GAGCAGTTTGGATGCCACAGCGTGTCTAGAGGATGAACACAGCCTTACGCCATTCTACACCAGAGGA
ACGGCAACGCCCGCCGCTCGCTGACATCGCTGACAAGTGTGACAACCTGTGGGCGTGCCTGCACACCTC
CTTTGCCCTGGCTCCTGAAGGCGTGTGGCAGCCGGCTGACCGAGAAGCTCCTGGAAGGTGCTCCGACCGAG
GATACCTTGGTCCAGATGGAGAAGCTCGCTGGTGAGGCAGGGGTGCTGTTGCCGGGCCTTGCCCGGAT
GGCCGTGGGGCGGTACCAGCTGTCTGCTCCTGGCAGGAATCGCTGAGGGAGGAAACGCGGCTCTGAA
TCAGCCAGAACGAGCCTTCGGGAAGCTCACCTCCGATCTCGGTG

ACGCGTACGCGGCCGCTCGAG - GFP Tag - GTTTAA



[View online »](#)

Protein Sequence: >RG204961 representing NM_144606
 Red=Cloning site Green=Tags(s)

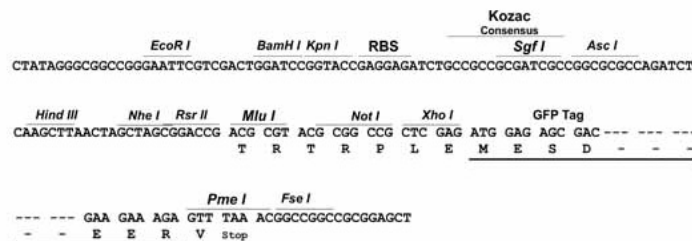
MNAIVALCHFCELHGPRTLFCTEVLHAPLPQGDGNEDSPGQGEQAEEEEEGGIQMNSRMRAHSPAEGASVE
 SSSPGPKKSDMCEGCRSLAAGHPGYISHDKETSIKYVSHQHPSHPQLFSIVRQACVRSLSCEVCPGREGP
 IFFGDEQHGFVFSHTFFIKDSLARGFQRWYSIITIMMDRIYLINSWPFLLGKVRGIIDELQKALKVFEA
 EQFGCPQRAQRMNTAFTPFLHQRNGNAARSLTSLTSDDNLWACLHTSFAWLLKACGSRLTEKLLEGAPTE
 DTLVQMEKLAGEAGVLLPGPWGPWPWGGTSCLLSWQESLREGNAALNQPRTSLREAHPPISV

TRTRPLE - GFP Tag - V

Restriction Sites: SgfI-MluI

Cloning Scheme:

Cloning sites used for ORF Shuttling:



ACCN: NM_144606

ORF Size: 1026 bp

OTI Disclaimer: The molecular sequence of this clone aligns with the gene accession number as a point of reference only. However, individual transcript sequences of the same gene can differ through naturally occurring variations (e.g. polymorphisms), each with its own valid existence. This clone is substantially in agreement with the reference, but a complete review of all prevailing variants is recommended prior to use. [More info](#)

OTI Annotation: This clone was engineered to express the complete ORF with an expression tag. Expression varies depending on the nature of the gene.

Components: The ORF clone is ion-exchange column purified and shipped in a 2D barcoded Matrix tube containing 10ug of transfection-ready, dried plasmid DNA (reconstitute with 100 ul of water).

Reconstitution Method:

1. Centrifuge at 5,000xg for 5min.
2. Carefully open the tube and add 100ul of sterile water to dissolve the DNA.
3. Close the tube and incubate for 10 minutes at room temperature.
4. Briefly vortex the tube and then do a quick spin (less than 5000xg) to concentrate the liquid at the bottom.
5. Store the suspended plasmid at -20°C. The DNA is stable for at least one year from date of shipping when stored at -20°C.

RefSeq: [NM_144606.7](#)

RefSeq Size: 1754 bp

RefSeq ORF: 1029 bp

Locus ID: 201163

UniProt ID: [Q8NFG4](#)

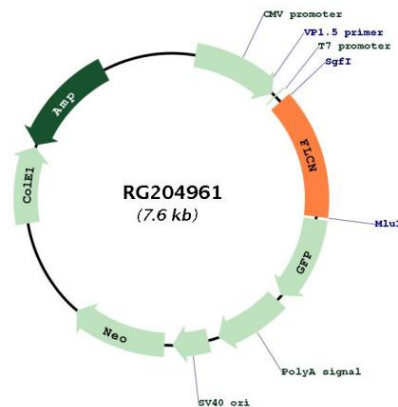
Cytogenetics: 17p11.2

Protein Families: Druggable Genome

Protein Pathways: Renal cell carcinoma

Gene Summary: This gene is located within the Smith-Magenis syndrome region on chromosome 17. Mutations in this gene are associated with Birt-Hogg-Dube syndrome, which is characterized by fibrofolliculomas, renal tumors, lung cysts, and pneumothorax. Alternative splicing of this gene results in two transcript variants encoding different isoforms. [provided by RefSeq, Jul 2008]

Product images:



Circular map for RG204961