

Product datasheet for **RG204950**

CBR1 (NM_001757) Human Tagged ORF Clone

Product data:

Product Type:	Expression Plasmids
Product Name:	CBR1 (NM_001757) Human Tagged ORF Clone
Tag:	TurboGFP
Symbol:	CBR1
Synonyms:	CBR; hCBR1; PG-9-KR; SDR21C1
Mammalian Cell Selection:	Neomycin
Vector:	pCMV6-AC-GFP (PS100010)
E. coli Selection:	Ampicillin (100 ug/mL)
ORF Nucleotide Sequence:	>RG204950 representing NM_001757 Red=Cloning site Blue=ORF Green=Tags(s)

TTTTGTAATACGACTCACTATAGGGCGGCCGGAATTCGTCGACTGGATCCGGTACCGAGGAGATCTGCC
GCC**CGATCGCC**

ATGTCGTCGGGCATCCATGTAGCGCTGGTACTGGAGGCAACAAGGGCATCGGCTTGCCATCGTGCGCG
ACCTGTGCCGGCTGTTCTCGGGGACGTGGTGCTCACGGCGCGGACGTGACGCGGGGCCAGGCGGCCGT
ACAGCAGCTGCAGGCGGAGGGCCTGAGCCCGCTTCCACCAGCTGGACATCGACGATCTGCAGAGCATC
CGCGCCCTGCGGACTTCTGCGCAAGGAGTACGGGGCCTGGACGTGCTGGTCAACAACGCGGGCATCG
CCTTCAAGTTGCTGATCCACACCCTTTCATATTCAAGCTGAAGTGACGATGAAAAAAATTTCTTTGG
TACCCGAGATGTGTGCACAGAATTACTCCTCTAATAAAACCCCAAGGGAGAGTGGTGAACGTATCTAGC
ATCATGAGCGTCAGAGCCCTTAAAAGCTGCAGCCAGAGCTGCAGCAGAAGTCCGCGAGTGCAGACCATCA
CTGAGGAGGAGCTGGTGGGGCTCATGAACAAGTTTGTGGAGGATACAAAGAAGGGAGTGCACCAGAAGGA
GGGCTGGCCAGCAGCGCATACGGGGTACGAAGATTGGCGTCACCGTTCTGTCCAGGATCCACGCCAGG
AAACTGAGTGAGCAGAGGAAAGGGGACAAGATCCTCCTGAATGCCTGCTGCCAGGTGGGTGAGAACTG
ACATGGCGGGACCCAAGGCCACCAAGAGCCAGAAGAAGTGCAGAGACCCTGTGACTTGGCCCTTTT
GCCCCAGATGCTGAGGGTCCCCATGGACAATTTGTTTCAGAGAAGAGAGTTGAACAGTGG

ACGCGTACGCGGCCGCTCGAG - GFP Tag - GTTTAA



[View online »](#)

Protein Sequence: >RG204950 representing NM_001757
Red=Cloning site Green=Tags(s)

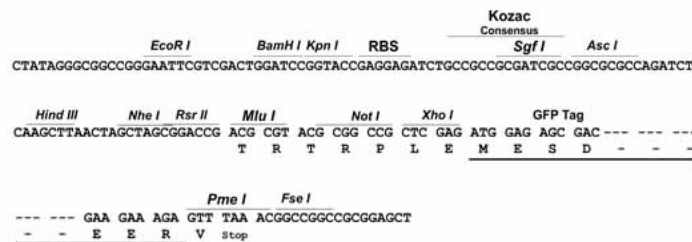
MSSGIHVALVTGGNKIGILAIVRDL CRLFSGDVVLTARDVTRGQAAVQQLQAEGLSPRFHQLDIDDLQSI
 RALRDFLRKEYGGLDVLVNNAGIAFKVADPTPFHIQAEVTMKTNFFGTRDVCTELLPLIKPQGRVVNVSS
 IMSVRALKSCSPELQKFRSETITEEELVGLMKNKFVEDTKKGVHQKEGWPSSAYGVTKIGVTVLSRIHAR
 KLSEQRKGDKILLNACCPGWVRTDMAGPKATKSPEEGAETPVYLALLPPDAEGPHGQFVSEKRVEQW

TRTRPLE - GFP Tag - V

Restriction Sites: SgfI-MluI

Cloning Scheme:

Cloning sites used for ORF Shutting:



ACCN: NM_001757

ORF Size: 831 bp

OTI Disclaimer: The molecular sequence of this clone aligns with the gene accession number as a point of reference only. However, individual transcript sequences of the same gene can differ through naturally occurring variations (e.g. polymorphisms), each with its own valid existence. This clone is substantially in agreement with the reference, but a complete review of all prevailing variants is recommended prior to use. [More info](#)

OTI Annotation: This clone was engineered to express the complete ORF with an expression tag. Expression varies depending on the nature of the gene.

Components: The ORF clone is ion-exchange column purified and shipped in a 2D barcoded Matrix tube containing 10ug of transfection-ready, dried plasmid DNA (reconstitute with 100 ul of water).

Reconstitution Method:

1. Centrifuge at 5,000xg for 5min.
2. Carefully open the tube and add 100ul of sterile water to dissolve the DNA.
3. Close the tube and incubate for 10 minutes at room temperature.
4. Briefly vortex the tube and then do a quick spin (less than 5000xg) to concentrate the liquid at the bottom.
5. Store the suspended plasmid at -20°C. The DNA is stable for at least one year from date of shipping when stored at -20°C.

RefSeq: [NM_001757.4](#)

RefSeq Size: 1245 bp

RefSeq ORF: 834 bp

Locus ID: 873

UniProt ID: [P16152](#)

Cytogenetics: 21q22.12

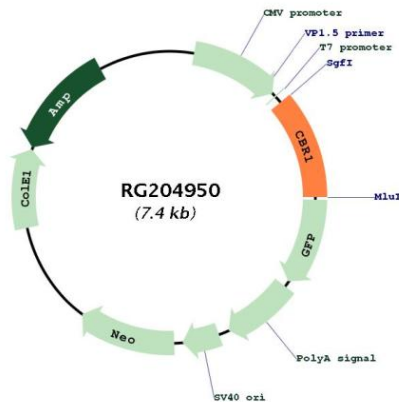
Domains: adh_short

Protein Families: Druggable Genome

Protein Pathways: Arachidonic acid metabolism, Metabolic pathways

Gene Summary: The protein encoded by this gene belongs to the short-chain dehydrogenases/reductases (SDR) family, which function as NADPH-dependent oxidoreductases having wide specificity for carbonyl compounds, such as quinones, prostaglandins, and various xenobiotics. Alternatively spliced transcript variants have been found for this gene. [provided by RefSeq, Nov 2013]

Product images:



Circular map for RG204950