

Product datasheet for **RG204942**

HPS6 (NM_024747) Human Tagged ORF Clone

Product data:

Product Type:	Expression Plasmids
Product Name:	HPS6 (NM_024747) Human Tagged ORF Clone
Tag:	TurboGFP
Symbol:	HPS6
Synonyms:	BLOC2S3
Mammalian Cell Selection:	Neomycin
Vector:	pCMV6-AC-GFP (PS100010)
E. coli Selection:	Ampicillin (100 ug/mL)



[View online »](#)

ORF Nucleotide Sequence:

>RG204942 representing NM_024747
 Red=Cloning site Blue=ORF Green=Tags(s)

TTTTGTAATACGACTCACTATAGGGCGGCCGGAATTCGTCGACTGGATCCGGTACCGAGGAGATCTGCC
 GCC**CGCATCGCC**

ATGAAGCGCTCGGGACTCTGCGGCTGCTCTCGGACCTGAGCGCCTTCGGCGGCGGGCGGGCTCCGGG
 AGCTGGTGGCCGGGACTCAGCGGTCCGAGTCCGTGGCAGTCCGACGGCCGCACTTGCTGCTCCTGCG
 ACCCCCTGGGGCGGTAGCCCCACAGCTGCTAGTCGCGTCGCGAGGGCCCGCGCGGAGCTAGAGCGGGCC
 TGGCCGGCCGGCAGCCCTCCCCGCTGGACGCCTTCTTCTGCGGTGGCCAGCGGGCCGGCGCTGGTGC
 TGGTGTGGGAGAGTGGCCTGGCCGAGGTGTGGGGCGGGCGTGGGGCCTGGCTGGCGGGCCTGCAGAG
 CACCGAGCTGTGTCGGGGCGGGGAGCCCGCTTGTGGCAGTGGCGGCGCTCCGAGGCCGCTGGTGTGG
 TGCAGAGGAGCGCAGGCCCGGGCCGAGGGCCCGTCAGGGTCGCCAGCAGCCGCTTTCAGCCACTGTGTG
 GCGTCCGACTCTGGAGCCAGCGGGGAAGCTAGCACCAGCCTGGGCCGACACACGTCCTGCTGCACCA
 CTGCCCTGCCTTCGGGCTGCTGGCTCCTGCAGACAACCTTCTGGTGGCCACTGCCACCCTGGCCT
 GCGGTGGCCACGTTCTACTCATCTGGAGCCAGGCAAGGGCAAAGTGATGGTGGCTGCCCCACGGCTTG
 GTCTCTCTACAGTAAGAGTCTGAATCCTGGACGAGGGGACACATGGGACTTCCGGACCCTGCTCCGAGG
 CCTTCTGGGTTGCTGTCCCCAGGGAGCCACTGGCTGTACACACCTGGGCCCAACTCCCAGGGCCTG
 CTGTTGCTTACTTCGGGGGACTGTGAGCCTATTGCAGTCCCACGGTGGTACGCGGGCTGTGGGACCC
 TGCAGGAGGCACCTGTAGGCCGTGGGGTCTGCAGCCCTAGGCACATTTAGGGCACTCTGGCCTGTGT
 GCTGGGCTCCACATTGAACTGCTGGACATGGGCAGTGGCAGCTGCTGGAGAGGAAGTCTAAGTACA
 GACAGGGTACATCTGCTAGAACCAGCCAGCCCCGGCATGGAGGATGAGGAAGAGCTGGAGACCCGAGGGA
 ATCTTCGCTGCTTTCAGCCTTGGTCTGTTTTGTGGGCTGGGAAGCCCCACAGGGTGTGAGTTGCC
 TTCAGCCAAGGATCTGGTGTGGTGGAGGCGCTGCGGGTACTACCAGCGGGGAGCCTGCGGGGTGCCAG
 CTCACTCCAGAAGAACTGAGACACAGCAGCACATTCGGGCACCTCAGGCTCTGGCCTCCATCCTCCAGG
 GCCACCTGCCCCATCTGCACTGCTGACCATGTTGAGGACCGAGCTTCGGGATTACCGAGGCTTAGAACA
 GCTGAAGGCCAGCTGGTGGCTGGGATGATGAGGAGGCTGGTTGGACTGAGCTGGCGGAGCAGGAAGTG
 GCACGCCTGCTGAGGACTGAGTTGATAGGAGACCAGCTAGCCAGCTCAACACCGTTTTTCAAGCCCTTC
 CTACAGCAGCCTGGGGTCCACCCTCAGGGCCCTGCAGCTCCAGCTAGATGGGAATGGCAAGCTGAGGTC
 CCAAGCACCCCTGATGTGTGGAAGAAAGTGTAGGGGAATAACCGCTGGAAGGAACCCCAATGGA
 ATACTGCCCCCTTTGAACTCCTGTGCCAGTGTCTGTGCCAGCTGGAGCCTCGATGGCTGCCACCCTTTG
 TGGAGCTGGCACAGCAGCAGGGCGGGCCGGCTGGGGGGCAGGGGCCAGGACTGCCCTGTATCGCCG
 AGCTCTGGCAGTCTAGGTGAGGAGGGGACCAGGCTGAGGCTCTGGAGCTAGAGCTGCTTTGAGCAGT
 GGGCGGCCTAAAGCTGTGCTCCAAGCTGTGGGACAGTGGTGAAAAGGAACAATGGGATCGGGCTCTGG
 ATGCTGGCCTGGCCCTCGGCCCTCCAGTCCCCTGCTTGAAGTGAATCTTCAAAGTGTGCTGGCCGA
 GTTTGCCAGCACCGCGGCTTGTGCTCACCTCCCCCTCTTTCGCCCTGTGCCACCAGAACTGGCT
 CCAGCTGAGCTCCTGCTTCTACTGAGGACATACCTCCAGATGAGGTGGGGCCCCAACCCCAATTCCTG
 AGCCTGGAGCAGAGCCCCCTCTACTGTGGCTTGCTCAAAGCCCTGCTGGAGCAGACTGGGGCTCAAGG
 ATGGCTGTGGGCCAGTTCTAAGCCATATGAGGACATCCTATGGGACCCAGCACTCCACCCCGACT
 CCACCTCGGGACCTA

ACGCGTACGCGGCCGCTCGAG - GFP Tag - GTTTAA

Protein Sequence: >RG204942 representing NM_024747
 Red=Cloning site Green=Tags(s)

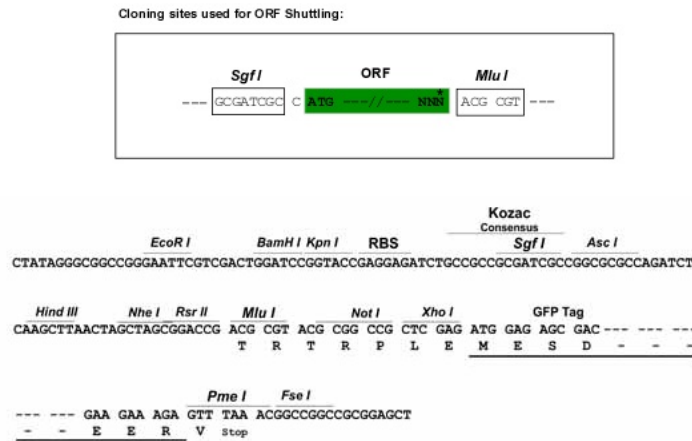
```

MKRSGTLRLLSDLFAFGGAARLREL VAGDSAVRVRGSPDGRHLLLLRPPGAVAPQLLVASRGPGAELERA
WPAGQPSPLDAFFLPWPARPALVLVWESGLAEVWGAGVGPWRPLQSTELCPGGGARVVAVALRGRLVW
CEERQARAEGPSGSPAAAFSHCVCVRTLEPSGEASTSLGRTHVLLHHCPAFGLLASCRLFLVPTATTWP
GVAHVLLIWSPGKGKVMVAAPRLGLSYKSLNPGRGDTWDFRTLLRGLPGLLSPREPLAVHTWAPTQGL
LLLDFFGGTVSLLQSHGGTRAVGTLQEAPVGPWGSAAALGTFQGTACVLGSTLELLDMGSGQLLERKVLST
DRVHLLLEPPAPGMEDEEELETRGNLRLLSALGLFCVGEAPQGVELPSAKDLVFEACGYQRRSLRGAQ
LTPEELRHSSTFRAPQALASILQGHLPSSALLTMLRTELRDYRGLQLKAQLVAGDDEEAGWTELAEQEV
ARLLRTELIGDQLAQLNTVFQALPTAAWGATLRALQLQLDNGKLRSQAPPDVWKKVVGGITAGKEPPNG
ILPPFELLQCLCQLEPRWLPFVELAQQQGGPGWGAGGPGPLPYRRALAVLGEETRPEALELELLSS
GRPKAVLQAVGQLVQKEQWDRALDAGLALGPSSPLLRSSEIFKLLLAFAQHRRLDAHLPLLRLCPPELA
PAELLLLLRTYLPDEVGPPTPFPEPGAEPPLTVGLLKALLEQTGAQGWLSPVLSYEDILWDPSTPPPT
PPRDL
  
```

TRTRPLE - GFP Tag - V

Restriction Sites: SgfI-MluI

Cloning Scheme:



ACCN: NM_024747

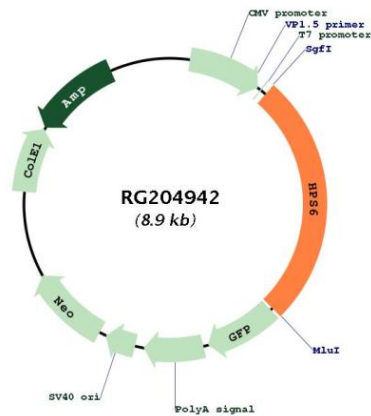
ORF Size: 2325 bp

OTI Disclaimer: The molecular sequence of this clone aligns with the gene accession number as a point of reference only. However, individual transcript sequences of the same gene can differ through naturally occurring variations (e.g. polymorphisms), each with its own valid existence. This clone is substantially in agreement with the reference, but a complete review of all prevailing variants is recommended prior to use. [More info](#)

OTI Annotation: This clone was engineered to express the complete ORF with an expression tag. Expression varies depending on the nature of the gene.

- Components:** The ORF clone is ion-exchange column purified and shipped in a 2D barcoded Matrix tube containing 10ug of transfection-ready, dried plasmid DNA (reconstitute with 100 ul of water).
- Reconstitution Method:**
1. Centrifuge at 5,000xg for 5min.
 2. Carefully open the tube and add 100ul of sterile water to dissolve the DNA.
 3. Close the tube and incubate for 10 minutes at room temperature.
 4. Briefly vortex the tube and then do a quick spin (less than 5000xg) to concentrate the liquid at the bottom.
 5. Store the suspended plasmid at -20°C. The DNA is stable for at least one year from date of shipping when stored at -20°C.
- RefSeq:** [NM_024747.6](#)
- RefSeq Size:** 2690 bp
- RefSeq ORF:** 2328 bp
- Locus ID:** 79803
- UniProt ID:** [Q86YV9](#)
- Cytogenetics:** 10q24.32
- Gene Summary:** This intronless gene encodes a protein that may play a role in organelle biogenesis associated with melanosomes, platelet dense granules, and lysosomes. This protein interacts with Hermansky-Pudlak syndrome 5 protein. Mutations in this gene are associated with Hermansky-Pudlak syndrome type 6. [provided by RefSeq, Jul 2008]

Product images:



Circular map for RG204942