

Product datasheet for **RG204931**

LENG1 (NM_024316) Human Tagged ORF Clone

Product data:

Product Type:	Expression Plasmids
Product Name:	LENG1 (NM_024316) Human Tagged ORF Clone
Tag:	TurboGFP
Symbol:	LENG1
Mammalian Cell Selection:	Neomycin
Vector:	pCMV6-AC-GFP (PS100010)
E. coli Selection:	Ampicillin (100 ug/mL)
ORF Nucleotide Sequence:	>RG204931 representing NM_024316 Red=Cloning site Blue=ORF Green=Tags(s)

TTTTGTAATACGACTCACTATAGGGCGGCCGGAATTCGTCGACTGGATCCGGTACCGAGGAGATCTGCC
GCC**CGATCGCC**

ATGAATATCTTGCCCAAGAAGAGCTGGCACGTCCGGAACAAGGACAATGTCGCCCGCGTGCGGCGTGACG
AGGCCAGGCCCGGGAGGAGGAGAAGGAGCGTGAGCGGAGGGTGCTGCTGGCTCAGCAAGAGGCCCGTAC
AGAATTCCTACGGAAGAAAGCCAGACATCAGAACTCACTGCCTGAGCTTGAAGCAGCAGAGGCGGGAGCC
CCAGGTTCTGGCCCTGTGGACCTGTTTCGGGAGCTGCTGGAGGAAGGAAAGGAGTGATCAGAGGCAATA
AAGAGTACGAGGAAGAAAAGCGACAGGAGAAAGAGAGGCAAGAGAAAGCTCTGGGCATCCTGACATACCT
GGGCCAGAGTGACGCGGAGGCACAGACTCAACCCCTTGGTACCAGCTACCCCGAGGCGAGGGGGCCCC
CCGCCCGGCCAGCCCCAGATGAGAAGATCAAGAGCCGTCTGGACCCTCTGCGGGAGATGCAGAAGCATC
TGGGGAAGAAGAGACAGCACGGCGGTGATGAAGGCAGTCGCAGCAGAAAGGAAAAGGAGGGGTCTGAGAA
GCAGCGACCCAAGGAGCCTCCATCCCTGGACCAGCTTCGAGCTGAACGTCTGCGGAGGGAAGCAGCTGAG
AGGTCTCGGGCAGAGGCCCTGCTGGCCCGGGTCCAAGGCCGGGCACTACAGGAGGGTCAGCCGGAAGAAG
ACGAGACGGATGACCGGCGGCGCGGTACAACCTCCAATTCAACCCCGAGCTGGCCCGGCGCCCCGCCA
GCAGGACCCTCACCTTACTCAC

ACGCGTACGCGGCGGCTCGAG - GFP Tag - GTTTAA



[View online »](#)

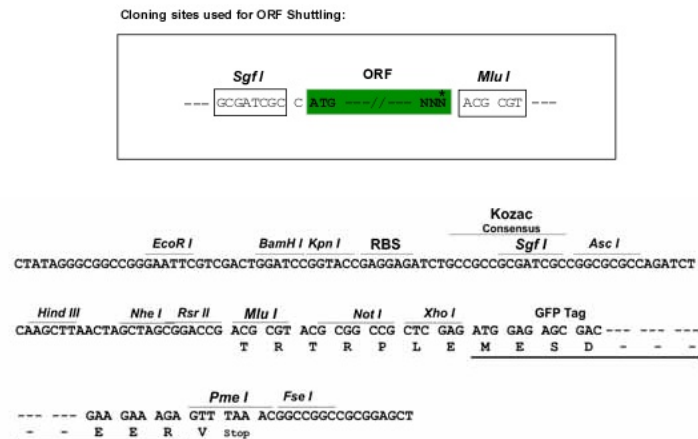
Protein Sequence: >RG204931 representing NM_024316
 Red=Cloning site Green=Tags(s)

MNILPKKSWHVRNKDNVARVRRDEAQAREEEKERERRVLLAQQEARTFLRKKARHQNSLPELEAAEAGA
 PGSGPVDLFRELLEEGKGVIRGNKEYEEERQKEKQEKALGILTYLGQSAAEAQTQPPWYQLPPGRGGP
 PPGPAPDEKIKSRLDPLREMQKHLGKKRQHGGDEGSRSRKEGSEKQRPKEPPSLDQLRAERLRREAAE
 RSRAEALLARVQGRALQEGQPEEDETDDRRTYNSQFNPQLARRPRQQDPHLTH

TRTRPLE – GFP Tag – V

Restriction Sites: SgfI-MluI

Cloning Scheme:



ACCN: NM_024316

ORF Size: 792 bp

OTI Disclaimer: The molecular sequence of this clone aligns with the gene accession number as a point of reference only. However, individual transcript sequences of the same gene can differ through naturally occurring variations (e.g. polymorphisms), each with its own valid existence. This clone is substantially in agreement with the reference, but a complete review of all prevailing variants is recommended prior to use. [More info](#)

OTI Annotation: This clone was engineered to express the complete ORF with an expression tag. Expression varies depending on the nature of the gene.

Components: The ORF clone is ion-exchange column purified and shipped in a 2D barcoded Matrix tube containing 10ug of transfection-ready, dried plasmid DNA (reconstitute with 100 ul of water).

Reconstitution Method:

1. Centrifuge at 5,000xg for 5min.
2. Carefully open the tube and add 100ul of sterile water to dissolve the DNA.
3. Close the tube and incubate for 10 minutes at room temperature.
4. Briefly vortex the tube and then do a quick spin (less than 5000xg) to concentrate the liquid at the bottom.
5. Store the suspended plasmid at -20°C. The DNA is stable for at least one year from date of shipping when stored at -20°C.

Note: Plasmids are not sterile. For experiments where strict sterility is required, filtration with 0.22um filter is required.

RefSeq: [NM_024316.1](#), [NP_077292.1](#)

RefSeq Size: 906 bp

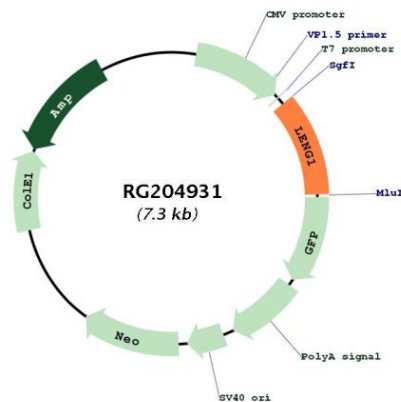
RefSeq ORF: 795 bp

Locus ID: 79165

UniProt ID: [Q96BZ8](#)

Cytogenetics: 19q13.42

Product images:



Circular map for RG204931