

Product datasheet for **RG204916**

ESRP2 (NM_024939) Human Tagged ORF Clone

Product data:

Product Type:	Expression Plasmids
Product Name:	ESRP2 (NM_024939) Human Tagged ORF Clone
Tag:	TurboGFP
Symbol:	ESRP2
Synonyms:	RBM35B
Mammalian Cell Selection:	Neomycin
Vector:	pCMV6-AC-GFP (PS100010)
E. coli Selection:	Ampicillin (100 ug/mL)



[View online »](#)

ORF Nucleotide Sequence:

>RG204916 representing NM_024939
 Red=Cloning site Blue=ORF Green=Tags(s)

TTTTGTAATACGACTCACTATAGGGCGGCCGGGAATTCGTCGACTGGATCCGGTACCGAGGAGATCTGCC
 GCC**CGCATCGCC**

ATGACTCCGCCGCCGCCGCCGCCCTCCCGGGCCCTGACCCCGCGGCGACCCGCCGCCGCCCT
 GCCCTGGCCCGGATCACTGGTCGTCTCTTCGGGGCTACGGCGGGTGGCTGGGACGGGACCTGGGCTC
 GGACGAGACCGACTTAATCCTCCTAGTTTGGCAAGTGGTTGAGCCGCGGAGCCGCCAGGTGGGGACGCTG
 CACAAATCGTGGTTCGTGCCGAGGCGGCCGACTGAGTACGAGTGGCGGAGGCGAGCGGCTGAGCG
 CCGACAGCCTGGCGGGGAGAGCCGCTGGACAAGGTGCTGCAGCAGTTCTCACAGCTGGTGAACGGGGA
 TGTGGCTTTGCTGGGCGGGGCCCTACATGCTCTGACTGATGGGCAGCAGCTATTGCGACAGGTCCTG
 CACCCCGAGGCCCTCAGGAAGAACCTGGTGTCCCGACATGTTCTTCTCCTTCTATGACCTCCGAAGAG
 AATTCCATATGCAGCATCAAGCACCTGCCCTGCCAGGGACCTCACTGTGGCCACCATGGCAGAGGTTT
 AGGACTGGAGACAGATGCCACAGAGGATGACTTTGGGGTCTGGGAAGTCAAGACAATGGTAGCTGTTATC
 CTCCATCTACTCAAAGAGCCAGCAGTCAATTGTTTTCGAAGCCCGAGGTGATAAAGCAGAAATACGAGA
 CGGGGCCCTTGAGCAAGGCTGATGTGGTGGACAGTGGACTGTGGTACGGGCTCGTGGGTTGCCGTGGCA
 GTCATCAGACCAGGACGTGGCTCGTCTTCAAAGGGCTCAACGTGGCCAGGGGTGGTGTAGCACTCTGC
 CTCAACGCCAGGGCCGAGAAATGGCGAGGCCCTCATCCGCTTGTGGACAGCGAGCAGCGGGACCTAG
 CGCTGCAGAGACACAAGCACCACATGGCGTCCGCTATATTGAGGTGTATAAAGCGACAGGGGAGGAGTT
 TGTAAGATTGCAGGGGGCACATCACTAGAGGTGGCTCGTTTCTGTACGGGAAGACCAAGTGATCCTG
 CGGCTGCGGGGACTGCCCTTCTCGGCTGGGCCAACGGACGTGCTTGGCTTCTGGGGCCAGAGTCCCGAG
 TGACTGGGGTACCGAGGGGCTGCTCTTGTGCCCATCCTGATGGCCGCGGACTGGTGTGCTTCCG
 CCTCTTTGCTTGTGAGGAGCTGGCACAGGCTGCACTGCGCAGGCACAAGGGCATGCTGGGTAAAGCATA
 ATTGAACTCTTCCGAGCACTGCAGCCGAAGTGCAGCAGGCTTGAACCGCTATGCATCCGGCCACTCC
 TTCTACTACTGACTGCCCACTGCTGCCATCCCTTCCCACTGGCACCTGGGACTGGGAGGACTGTGT
 ACGCCTCCGAGGCTGCCCTACACGGCCACCATGAAGACATCCTGAGCTTCTGGGGGAGGCAGCAGCT
 GACATTCGGCCCCACGGTGTACACATGGTGTCAACCAGCAGGGCCGGCCATCGGGCGATGCCTTCATTC
 AGATGACATCAGCAGAGCGAGCCCTAGCTGCTGCTCAGCGTTGCCATAAGAAGGTGATGAAGGAGCGTA
 CGTGGAGGTGGTCCCCTGTTCCACAGAGGAGATGAGCCGAGTGTGATGGGGGACCTTGGGCCGAGT
 GGCATGTCCCCTCCACCCTGCAAGCTGCCCTGCCTCTCACCACCTACCTACACCACCTTCAAGCCACCC
 CAACGCTCATTCCACGGAGACGGCAGCTCTATACCCCTTTCAGCACTGCTCCCAGCTGCCAGGGTGCC
 TGCTGCCCCACCCCTGTTGCCTACTATCCAGGGCCAGCCACTCAACTCTACCTGAACTACACAGCCTAC
 TACCCAAGCCCCCAGTCTCCCCACCACTGTGGGCTACCTCACTACACCACCTGCTGCCCTGGCCTCTG
 CTCCCACCTCAGTGTGTCCCAGTCAAGGAGCCTTGGTCCGCATGCAGGGTGTCCCATACACGGCTGGTAT
 GAAGGATCTGCTCAGCGTCTCCAGGCCTACCAGCTACCCGCTGATGACTACACCAGTCTGATGCCTGTT
 GGTGACCCACCTCGCACTGTGTTACAAGCCCCAAGGAATGGGTGTGTTT

ACGCGTACGCGGCCGCTCGAG - GFP Tag - GTTTAA

Protein Sequence: >RG204916 representing NM_024939
 Red=Cloning site Green=Tags(s)

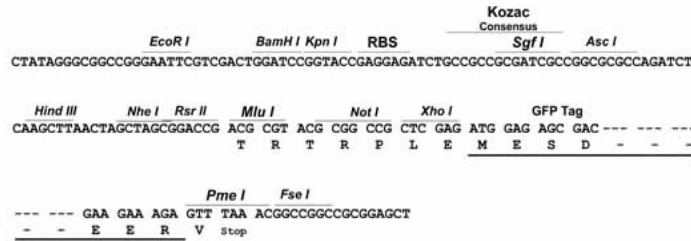
MTPPPPPPPPGPDPAADPAADPCWPWGSLLVLFGATAGALGRDLGSDETDLILLVWQVVEPRSRQVGTL
 HKSLVRAEAAALSTQCREASGLSADSLARAEPDKVLQQFSQLVNGDVALLGGGPYMLCTDGGQLLRQVL
 HPEASRKNLVL PDMFFSFYDLRREFHMQHPSTCPARDLTVATMAQGLGLETDATEDDFGVWEVKTMVAVI
 LHLLKEPSSQLFSKPEVIKQKYETGPCSKADVVDSETVVRARGLPWQSSDQDVARFFKGLNVARGGVALC
 LNAQGRNGEALIRFVDSEQRDLALQRHKHHMGVRYIEVYKATGEEFVKIAGGTSLEVARFLSREDQVIL
 RLRGLPFSAGPTDVLGFLGPECPVTGGTEGLLFVRHPDGRPTGDALFALFACEELAQAALRRHKGMLGKRY
 IELFRSTAAEVQVLNRYASGPLLPTLTAPLLIPFPLAPGTGRDCVRLRGLPYTATIEDILSFLGEEAAA
 DIRPHGVHMLNQGRPSGDAFIQMTSAERALAAAQRCHKVKMKERYVEVVPSTEEMSRVLMGGTLGRS
 GMSPPPCKLPCLSPPTYTTFQATPTLIPPTETAALYPSSALLPAARVPAAPTPVAYYPGPATQLYLNRYTAY
 YPSPPVSPPTTVGYLTTPTAALASAPTSVLSQSGALVRMQGVPYTAGMKDLLSVFQAYQLPADDYTSMPV
 GDPPTVQLQAPKEWVCL

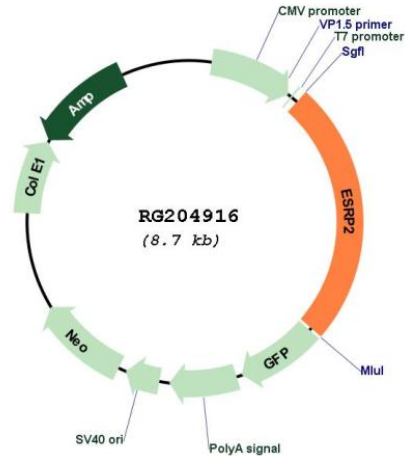
TRTRPLE - GFP Tag - V

Restriction Sites: SgfI-MluI

Cloning Scheme:

Cloning sites used for ORF Shutting:



Plasmid Map:


ACCN: NM_024939

ORF Size: 2151 bp

OTI Disclaimer: Due to the inherent nature of this plasmid, standard methods to replicate additional amounts of DNA in E. coli are highly likely to result in mutations and/or rearrangements. Therefore, OriGene does not guarantee the capability to replicate this plasmid DNA. Additional amounts of DNA can be purchased from OriGene with batch-specific, full-sequence verification at a reduced cost. Please contact our customer care team at custsupport@origene.com or by calling 301.340.3188 option 3 for pricing and delivery.

The molecular sequence of this clone aligns with the gene accession number as a point of reference only. However, individual transcript sequences of the same gene can differ through naturally occurring variations (e.g. polymorphisms), each with its own valid existence. This clone is substantially in agreement with the reference, but a complete review of all prevailing variants is recommended prior to use. [More info](#)

OTI Annotation: This clone was engineered to express the complete ORF with an expression tag. Expression varies depending on the nature of the gene.

Components: The ORF clone is ion-exchange column purified and shipped in a 2D barcoded Matrix tube containing 10ug of transfection-ready, dried plasmid DNA (reconstitute with 100 ul of water).

Reconstitution Method:

1. Centrifuge at 5,000xg for 5min.
2. Carefully open the tube and add 100ul of sterile water to dissolve the DNA.
3. Close the tube and incubate for 10 minutes at room temperature.
4. Briefly vortex the tube and then do a quick spin (less than 5000xg) to concentrate the liquid at the bottom.
5. Store the suspended plasmid at -20°C. The DNA is stable for at least one year from date of shipping when stored at -20°C.

RefSeq: [NM_024939.3](#)

RefSeq Size: 4021 bp

RefSeq ORF: 2154 bp

Locus ID: 80004

UniProt ID: [Q9H6T0](#)

Cytogenetics: 16q22.1

Gene Summary: ESPR2 is an epithelial cell-type-specific splicing regulator (Warzecha et al., 2009 [PubMed 19285943]).[supplied by OMIM, Aug 2009]