

## Product datasheet for **RG204886**

### CD160 (NM\_007053) Human Tagged ORF Clone

#### Product data:

**Product Type:** Expression Plasmids  
**Product Name:** CD160 (NM\_007053) Human Tagged ORF Clone  
**Tag:** TurboGFP  
**Symbol:** CD160  
**Synonyms:** BY55; NK1; NK28  
**Mammalian Cell Selection:** Neomycin  
**Vector:** pCMV6-AC-GFP (PS100010)  
**E. coli Selection:** Ampicillin (100 ug/mL)  
**ORF Nucleotide Sequence:** >RG204886 representing NM\_007053  
Red=Cloning site Blue=ORF Green=Tags(s)

TTTTGTAATACGACTCACTATAGGGCGGCCGGAATTCGTCGACTGGATCCGGTACCGAGGAGATCTGCC  
GCC**CGATCGCC**

ATGCTGTTGGAACCCGGCAGAGGCTGCTGTGCCCTGGCCATCCTGCTGGCAATTGTGGACATCCAGTCTG  
GTGGATGCATTAACATCACCAGCTCAGCTTCCAGGAAGGAACCGCGACTAACTTAATCTGTACTGTATG  
GCATAAGAAAGAAGAGGCTGAGGGTTTGTAGTGTTCGCAAGGACAGGTCTGGAGACTGTTCTCCT  
GAGACCAGTTAAACAGCTGAGACTTAAAGGGATCCTGGGATAGATGGTGTGGTAAATATCATCTC  
AGTTGATGTTACCATAAGCCAAGTCACACCGTTGCACAGTGGGACCTACAGTGTGTGCCAGAAGCCA  
GAAGTCAGGTATCCGCCTCAGGGCCATTTTTCTCCATTCTATTCACAGAGACAGGGAACCTACACAGTG  
ACGGGATTGAAACAAAGACAACACCTTGAGTTCAGCCATAATGAAGGCACTCTCAGTTCAGGCTTCTAC  
AAGAAAAGGTCTGGGTAATGCTGGTCACCAGCCTGTGGCCCTTCAAGCTTTG

**ACGCGT**ACGCGGCCGCTCGAG - GFP Tag - GTTTAA

**Protein Sequence:** >RG204886 representing NM\_007053  
Red=Cloning site Green=Tags(s)

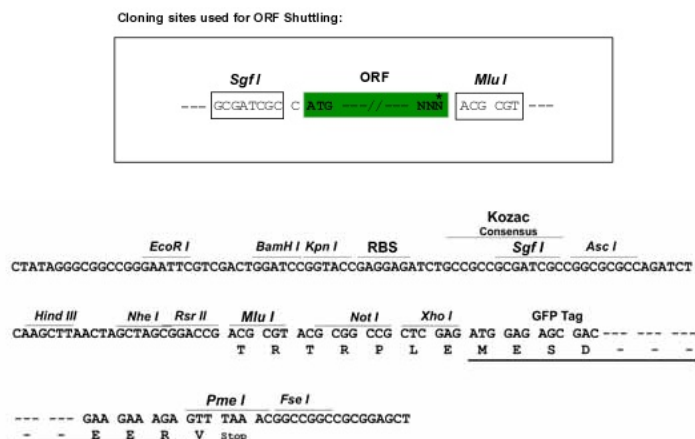
MLLEPGRGCCALAILLAIVDIQSGGCINITSSASQEGTRLNLICTVWHKKEEAEGFVFLCKDRSGDCSP  
ETSLKQLRLKRDPGIDGVGEISSQLMFTISQVTPHSGTYQCCARSQKSGIRLQGHFFSILFTETGNVTV  
TGLKQRQHLEFSHNEGTLSSGFLQEKVWVMLVTSLVALQAL

**TRTRPLE** - GFP Tag - V

**Restriction Sites:** Sgfl-MluI



[View online »](#)

**Cloning Scheme:**


**ACCN:** NM\_007053

**ORF Size:** 543 bp

**OTI Disclaimer:** The molecular sequence of this clone aligns with the gene accession number as a point of reference only. However, individual transcript sequences of the same gene can differ through naturally occurring variations (e.g. polymorphisms), each with its own valid existence. This clone is substantially in agreement with the reference, but a complete review of all prevailing variants is recommended prior to use. [More info](#)

**OTI Annotation:** This clone was engineered to express the complete ORF with an expression tag. Expression varies depending on the nature of the gene.

**Components:** The ORF clone is ion-exchange column purified and shipped in a 2D barcoded Matrix tube containing 10ug of transfection-ready, dried plasmid DNA (reconstitute with 100 ul of water).

**Reconstitution Method:**

1. Centrifuge at 5,000xg for 5min.
2. Carefully open the tube and add 100ul of sterile water to dissolve the DNA.
3. Close the tube and incubate for 10 minutes at room temperature.
4. Briefly vortex the tube and then do a quick spin (less than 5000xg) to concentrate the liquid at the bottom.
5. Store the suspended plasmid at -20°C. The DNA is stable for at least one year from date of shipping when stored at -20°C.

**RefSeq:** [NM\\_007053.4](#)

**RefSeq Size:** 1559 bp

**RefSeq ORF:** 546 bp

**Locus ID:** 11126

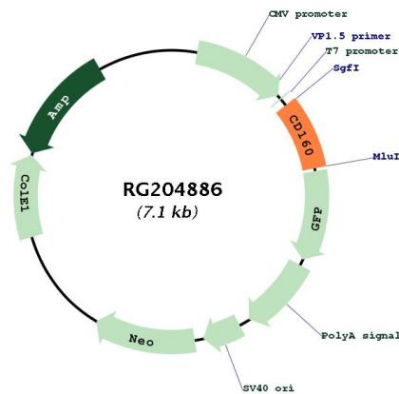
**UniProt ID:** [O95971](#)

**Cytogenetics:** 1q21.1

**Protein Families:** Druggable Genome

**Gene Summary:** CD160 is an 27 kDa glycoprotein which was initially identified with the monoclonal antibody BY55. Its expression is tightly associated with peripheral blood NK cells and CD8 T lymphocytes with cytolytic effector activity. The cDNA sequence of CD160 predicts a cysteine-rich, glycosylphosphatidylinositol-anchored protein of 181 amino acids with a single Ig-like domain weakly homologous to KIR2DL4 molecule. CD160 is expressed at the cell surface as a tightly disulfide-linked multimer. RNA blot analysis revealed CD160 mRNAs of 1.5 and 1.6 kb whose expression was highly restricted to circulating NK and T cells, spleen and small intestine. Within NK cells CD160 is expressed by CD56dimCD16+ cells whereas among circulating T cells its expression is mainly restricted to TCRgd bearing cells and to TCRab+CD8brightCD95+CD56+CD28-CD27-cells. In tissues, CD160 is expressed on all intestinal intraepithelial lymphocytes. CD160 shows a broad specificity for binding to both classical and nonclassical MHC class I molecules. [provided by RefSeq, Jul 2008]

**Product images:**



Circular map for RG204886