

Product datasheet for **RG204858**

PROCR (NM_006404) Human Tagged ORF Clone

Product data:

Product Type:	Expression Plasmids
Product Name:	PROCR (NM_006404) Human Tagged ORF Clone
Tag:	TurboGFP
Symbol:	PROCR
Synonyms:	CCCA; CCD41; EPCR
Mammalian Cell Selection:	Neomycin
Vector:	pCMV6-AC-GFP (PS100010)
E. coli Selection:	Ampicillin (100 ug/mL)
ORF Nucleotide Sequence:	>RG204858 representing NM_006404 Red=Cloning site Blue=ORF Green=Tags(s)

TTTTGTATACGACTCACTATAGGGCGCCGGAATTCGTCGACTGGATCCGGTACCGAGGAGATCTGCC
GCC**CGATCGC**

ATGTTGACAACATTGCTGCCGATACTGCTGCTGTCTGGCTGGGCCTTTTGTAGCCAAGACGCCTCAGATG
GCCTCAAAGACTTCATATGCTCCAGATCTCTACTTCCGCGACCCCTATCACGTGTGGTACCAGGGCAA
CGCGTCGCTGGGGGACACCTAACGCACGTGCTGGAAGGCCAGACCAACACCACGATCATTACGCTG
CAGCCCTTGCAGGAGCCGAGAGCTGGGCGCGCACGCAGAGTGGCCTGCAGTCTACCTGCTCCAGTTCC
ACGGCCTCGTGCGCCTGGTGCACCAGGAGCGGACCTTGGCCTTTCTCTGACCATCCGCTGCTTCCTGGG
CTGTGAGCTGCCTCCCGAGGGCTCTAGAGCCCATGTCTTCTTGAAGTGGCTGTGAATGGGAGCTCCTTT
GTGAGTTTCCGGCCGGAGAGAGCCTTGTGGCAGGCAGACCCAGGTACCTCCGGAGTGGTCACCTTCA
CCCTGCAGCAGCTCAATGCCTACAACCGCACTCGGTATGAACTGCGGGAATTCCTGGAGGACACCTGTGT
GCAGTATGTGCAGAAACATATTTCCGCGGAAAACACGAAAGGGAGCCAAACAAGCCGCTCTACACTTCG
CTGGTCCTGGGCGTCTGGTGGGCGTTTCATCATTGCTGGTGTGGCTGTAGGCATCTTCTGTGCACAG
GTGGACGGCGATGT

AG**CGGACCG**ACGCGTACGCGGCCGCTCGAG - GFP Tag - GTTTAA



[View online »](#)

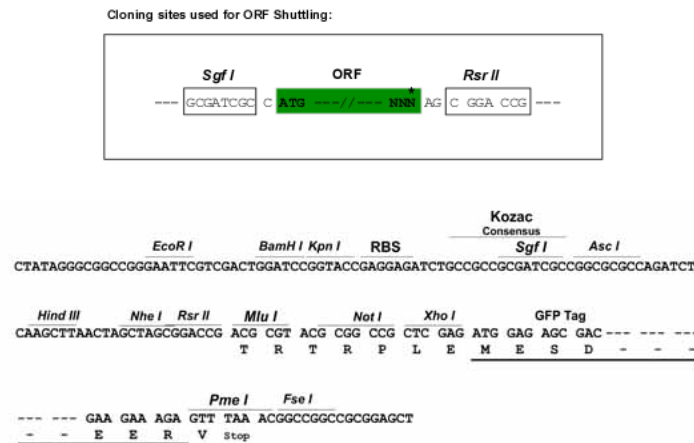
Protein Sequence: >RG204858 representing NM_006404
 Red=Cloning site Green=Tags(s)

MLTTLLPILLLSGWAFCSQDASDGLQRLHMLQISYFRDPYHVWYQGNASLGGHLTHVLEGPDTNTTIIQL
 QPLQEPESWARTQSGLSYLLQFHGLVRLVHQERTLAFPLTIRCFLGCELPPEGSRAHVFFEVAVNGSSF
 VSFRPERALWQADTQVTSGVVFTLQQLNAYNRTRYELREFLEDTCVQYVQKHISAENTKGSQTSRSYTS
 LVLGVLVGGFIIAGVAVGIFLCTGGRR

SGPTRRRLE - GFP Tag - V

Restriction Sites: SgfI-RsrII

Cloning Scheme:



ACCN: NM_006404

ORF Size: 714 bp

OTI Disclaimer: The molecular sequence of this clone aligns with the gene accession number as a point of reference only. However, individual transcript sequences of the same gene can differ through naturally occurring variations (e.g. polymorphisms), each with its own valid existence. This clone is substantially in agreement with the reference, but a complete review of all prevailing variants is recommended prior to use. [More info](#)

OTI Annotation: This clone was engineered to express the complete ORF with an expression tag. Expression varies depending on the nature of the gene.

Components: The ORF clone is ion-exchange column purified and shipped in a 2D barcoded Matrix tube containing 10ug of transfection-ready, dried plasmid DNA (reconstitute with 100 ul of water).

Reconstitution Method:

1. Centrifuge at 5,000xg for 5min.
2. Carefully open the tube and add 100ul of sterile water to dissolve the DNA.
3. Close the tube and incubate for 10 minutes at room temperature.
4. Briefly vortex the tube and then do a quick spin (less than 5000xg) to concentrate the liquid at the bottom.
5. Store the suspended plasmid at -20°C. The DNA is stable for at least one year from date of shipping when stored at -20°C.

RefSeq: [NM_006404.2](#)

RefSeq Size: 1483 bp

RefSeq ORF: 717 bp

Locus ID: 10544

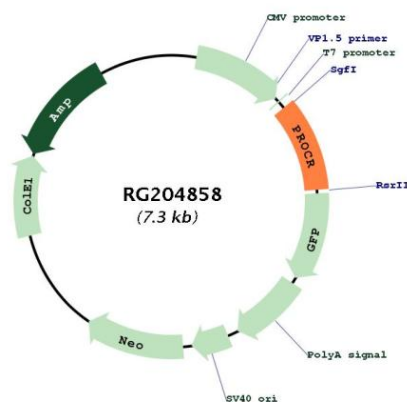
UniProt ID: [Q9UNN8](#)

Cytogenetics: 20q11.22

Protein Families: Druggable Genome, ES Cell Differentiation/IPS, Transmembrane

Gene Summary: The protein encoded by this gene is a receptor for activated protein C, a serine protease activated by and involved in the blood coagulation pathway. The encoded protein is an N-glycosylated type I membrane protein that enhances the activation of protein C. Mutations in this gene have been associated with venous thromboembolism and myocardial infarction, as well as with late fetal loss during pregnancy. The encoded protein may also play a role in malarial infection and has been associated with cancer. [provided by RefSeq, Jul 2013]

Product images:



Circular map for RG204858