

Product datasheet for **RG204840**

LILRB1 (NM_001081639) Human Tagged ORF Clone

Product data:

Product Type:	Expression Plasmids
Product Name:	LILRB1 (NM_001081639) Human Tagged ORF Clone
Tag:	TurboGFP
Symbol:	LILRB1
Synonyms:	CD85J; ILT-2; ILT2; LIR-1; LIR1; MIR-7; MIR7; PIR-B; PIRB
Mammalian Cell Selection:	Neomycin
Vector:	pCMV6-AC-GFP (PS100010)
E. coli Selection:	Ampicillin (100 ug/mL)



[View online »](#)

ORF Nucleotide Sequence:

>RG204840 representing NM_001081639
 Red=Cloning site Blue=ORF Green=Tags(s)

TTTTGTAATACGACTCACTATAGGGCGGCCGGGAATTCGTCGACTGGATCCGGTACCGAGGAGATCTGCC
 GCC**CGGATCGCC**

ATGACCCCATCCTCACGGTCTGATCTGTCTCGGGCTGAGTCTGGGCCCCCGACCCACGTGCAGGCAG
 GGCACCTCCCAAGCCACCCTCTGGGCTGAACCAAGGCTCTGTGATCACCCAGGGGAGTCCCTGTGACCCCT
 CAGGTGTAGGGGGGCCAGGAGACCCAGGAGTACCGTCTATATAGAGAAAAGAAAACAGCACCCCTGGATT
 ACACGGATCCCACAGGAGCTTGTGAAGAAGGGCCAGTTCCCCATCCCATCCATCACCTGGGAACATGCAG
 GGCGGTATCGCTGTTACTATGGTAGCGACTGCAGGCCGCTCAGAGAGCAGTGACCCCTGGAGCTGGT
 GGTGACAGGAGCCTACATCAAACCCACCCTCTCAGCCCAGCCAGCCCCGTGGAAGTCAAGGAGGGAAT
 GTAACCTCCAGTGTGACTCACAGGTGGCATTGATGGCTTCATTCTGTGAAGGAAGGAGAAGATGAAC
 ACCACAATGCCTGAACCCAGCCCCATGCCCGTGGGTCGTCCCGGCCATCTTCTCCGTGGGCCCGT
 GAGCCCGAGTCGAGGTGGTGGTACAGGTGCTATGCTTATGACTCGAAGTCTCCCTATGAGTGGTCTCTA
 CCCAGTGTCTCCTGGAGCTCCTGGTCTAGGTGTTTCTAAGAAGCCATCACTCTCAGTGCAGCCAGGTC
 CTATCGTGGCCCCGAGGAGACCCTGACTCTGCAGTGTGGCTCTGATGCTGGCTACAACAGATTTGTTCT
 GTATAAGGACGGGGAACGTGACTTCCTTCAGCTCGCTGGCGCACAGCCCAGGCTGGGCTCTCCAGGCC
 AACTTCACCTGGGCCCTGTGAGCCGCTCTACGGGGCCAGTACAGATGCTACGGTGCACACAACCTCT
 CCTCCGAGTGGTGGCCCCCAGCGACCCCTGGACATCCTGATCGCAGGACAGTTCTATGACAGAGTCTC
 CCTCTCGGTGCAGCCGGGCCACGGTGGCCTCAGGAGAGAAGTACCCCTGCTGTGTGAGTGCAGGGA
 TGGATGCAAACTTCTCTGACCAAGGAGGGGGCAGCTGATGACCCATGGCGTCAAGATCAACGTACC
 AATCTCAAAAATACCAGGCTGAATTCCTCATGGTCTGTGACCTCAGCCATGCGGGGACCTACAGGTG
 CTACGGCTCACAGAGCTCAAACCTACCTGCTGACTCACCCAGTGACCCCTGGAGCTCGTGGTCTCA
 GGACCGTCTGGGGCCCCAGTCCCCGACAACAGGCCCCACCTCCACATCTGGCCCTGAGGACCAGCCCC
 TCACCCACCAGGGTGGATCCCCAGAGTGGTCTGGGAAGGCACCTGGGGTTGTGATCGGCATCTTGGT
 GGCCGTACTCTACTGCTCCTCCTCCTCCTCCTCCTCCTCCTCCTCCTCCTCCTCCTCCTCCTCCTCCTC
 CACTGGACATCGACCCAGAGAAAGGCTGATTTCCAACATCCTGCAGGGGCTGTGGGGCCAGAGCCCACAG
 ACAGAGGCTGCAGTGGAGTCCAGCCAGTGGCGATGCCAGGAAGAAAACCTCTATGCTGCCGTGAA
 GCACACAGCCTGAGGATGGGGTGGAGATGGACTCGGAGCCACACGATGAAGACCCCAAGGACAGT
 ACGTATGCCGAGGTGAAACTCCAGACCTAGGAGAGAAATGGCCTCCTCCTCCTCCTCCTCCTCCTCCTC
 AATTCTGGACACAAAGGACAGACAGGGGAAGAGGACAGGCAGATGGACTGAGGCTGCATCTGA
 AGCCCCCAGGATGTGACCTACGCCAGCTGCACAGCTTGACCCTTAGACGGAAGGCAACTGAGCCTCCT
 CCATCCAGGAAGGGCCCTCTCCAGCTGTGCCAGCATCTACGCCACTCTGGCCATCCAC

ACGCGTACGCGGCCGCTCGAG - GFP Tag - GTTTAA

Protein Sequence:

>RG204840 representing NM_001081639
 Red=Cloning site Green=Tags(s)

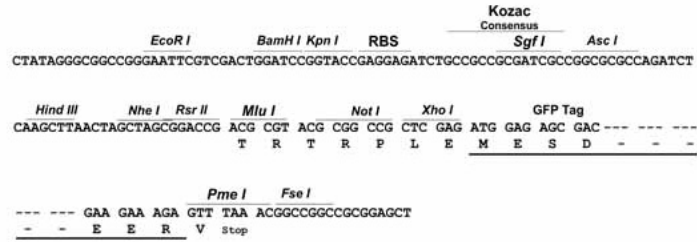
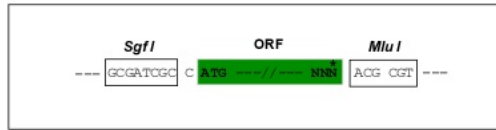
MTPILTVL ICLGSLGPRTHVQAGHLPKPTLWAEPSVITQGSPVTLRCQGGQETQEYRLYREKKTAPWI
 TRIPQELVKKGFPIPSITWEHAGRYRCYYGSDTAGRESSDPLELVVTGAYIKPTLSAQSPVNVNSGGN
 VTLQCDSQVAFDGFILCKEGEDHPQLNSQPHARGSSRAIFSVGPVSPSRRWWYRCYAYDSNSPYEWSL
 PSDLLELLVLVGSKKPSLSVQPGPIVAPEETLTLQCGSDAGYNRFVLKDGGERDFLQLAGAQPQAGLSQA
 NFTLGPVRSYGGQYRCYGAHNLSEWSAPSDPLDILIAQGFYDRVSLSVQPGPTVASGENVTLLCQSQG
 WMQTFLLTKEGAADDPWRLRSTYQSQKYQAEFPMGPVTSAHAGTYRCYGSQSSKPYLLTHPSDPLELVVS
 GPSSGSSPTTGPSTSGPEDQPLTPTGSDPQSGLGRHLGVVIGILVAVILLLLLLLLLLFLILRHRRQGK
 HWTSTQRKADFQHPAGAVGPEPTDRGLQWRSSPAADAQEENLYAAVKHTQPEDGVEMDTRSPHEDPQAV
 TYAEVKHSRPRREMASSPSLSGEFLDTKDRQAEEDRQMDTEAAASEAPQDVTYAQLHSLTLRRKATEPP
 PSQEGSPAVPSIYATLAIH

TRTRPLE - GFP Tag - V

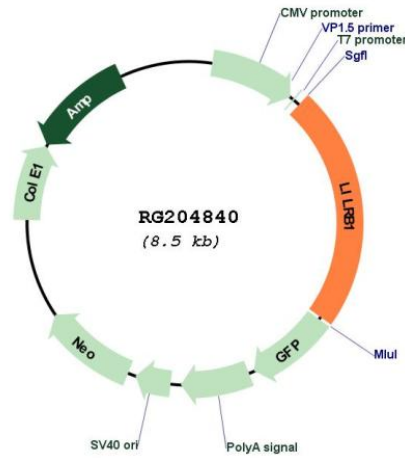
Restriction Sites: SgfI-MluI

Cloning Scheme:

Cloning sites used for ORF Shutting:



Plasmid Map:



ACCN: NM_001081639

ORF Size: 1953 bp

OTI Disclaimer:	The molecular sequence of this clone aligns with the gene accession number as a point of reference only. However, individual transcript sequences of the same gene can differ through naturally occurring variations (e.g. polymorphisms), each with its own valid existence. This clone is substantially in agreement with the reference, but a complete review of all prevailing variants is recommended prior to use. More info
OTI Annotation:	This clone was engineered to express the complete ORF with an expression tag. Expression varies depending on the nature of the gene.
Components:	The ORF clone is ion-exchange column purified and shipped in a 2D barcoded Matrix tube containing 10ug of transfection-ready, dried plasmid DNA (reconstitute with 100 ul of water).
Reconstitution Method:	<ol style="list-style-type: none">1. Centrifuge at 5,000xg for 5min.2. Carefully open the tube and add 100ul of sterile water to dissolve the DNA.3. Close the tube and incubate for 10 minutes at room temperature.4. Briefly vortex the tube and then do a quick spin (less than 5000xg) to concentrate the liquid at the bottom.5. Store the suspended plasmid at -20°C. The DNA is stable for at least one year from date of shipping when stored at -20°C.
RefSeq:	NM_001081639.1 , NP_001075108.1
RefSeq Size:	2859 bp
RefSeq ORF:	1956 bp
Locus ID:	10859
UniProt ID:	Q8NHL6
Cytogenetics:	19q13.42
Protein Families:	Transmembrane
Gene Summary:	This gene is a member of the leukocyte immunoglobulin-like receptor (LIR) family, which is found in a gene cluster at chromosomal region 19q13.4. The encoded protein belongs to the subfamily B class of LIR receptors which contain two or four extracellular immunoglobulin domains, a transmembrane domain, and two to four cytoplasmic immunoreceptor tyrosine-based inhibitory motifs (ITIMs). The receptor is expressed on immune cells where it binds to MHC class I molecules on antigen-presenting cells and transduces a negative signal that inhibits stimulation of an immune response. It is thought to control inflammatory responses and cytotoxicity to help focus the immune response and limit autoreactivity. Multiple transcript variants encoding different isoforms have been found for this gene. [provided by RefSeq, Jul 2008]