

Product datasheet for **RG204805**

ARL5B (NM_178815) Human Tagged ORF Clone

Product data:

Product Type: Expression Plasmids
Product Name: ARL5B (NM_178815) Human Tagged ORF Clone
Tag: TurboGFP
Symbol: ARL5B
Synonyms: ARL8
Mammalian Cell Selection: Neomycin
Vector: pCMV6-AC-GFP (PS100010)
E. coli Selection: Ampicillin (100 ug/mL)
ORF Nucleotide Sequence: >RG204805 representing NM_178815
Red=Cloning site Blue=ORF Green=Tags(s)

TTTTGTAATACGACTCACTATAGGGCGGCCGGAATTCGTCGACTGGATCCGGTACCGAGGAGATCTGCC
GCC**CGATCGCC**

ATGGGGCTGATCTTCGCCAACTGTGGAGCCTCTTCTGTAACCAAGAACACAAAGTAATTATAGTGGGAC
TGGATAATGCAGGGAAAACCACCATTCTTACCAATTCTTAATGAATGAAGTGGTTCATACTTCTCCAAC
CATAGGAAGCAATGTTGAAGAAATAGTTGTGAAGAACACTCATTTTCTTATGTGGGATATTGGTGGTCAG
GAGTCTCTGCGATCATCCTGGAACACATATTACTCAAATACAGAGTTCATCATTCTTGTGTTGATAGCA
TTGACAGGGAACGACTAGCTATTACAAAAGAAGAATTATACAGAATGTTGGCTCATGAGGATTTACGGAA
GGCTGCAGTCCTTATCTTTGCAAATAAACAGGATATGAAAGGGTGTATGACAGCAGCTGAAATCTCGAAA
TACCTCACCCCTTAGTTCAATTAAGGATCATCCATGGCACATTCAATCCTGCTGTGCTCTCACAGGAGAAG
GTTTATGCCAAGGTCTAGAGTGGATGACCTCCCGATTGGTGTGAGA

ACGCGTACGCGGCCGCTCGAG - GFP Tag - GTTTAA

Protein Sequence: >RG204805 representing NM_178815
Red=Cloning site Green=Tags(s)

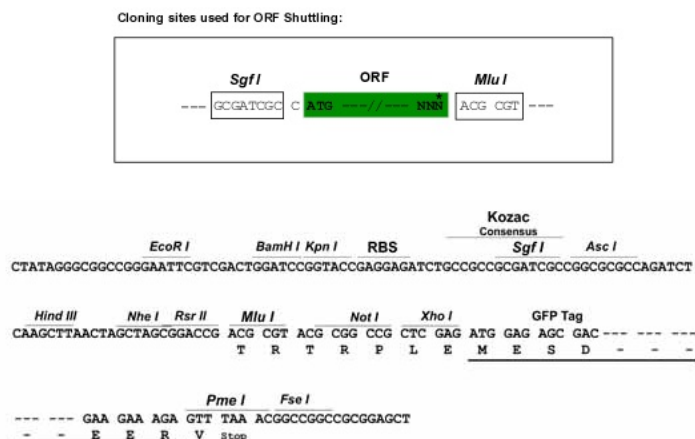
MGLIFAKLWLSFCNQEHKVIVGLDNAGKTTILYQFLMNEVVHTSPTIGSNVEEIVVKNTHFLMWDIGGQ
ESLRSSWNTYYSNTEFIIILVVDSIDRERLAIKKEELYRMLAHEDLRKAAVLIFANKQDMKGCMTAAEISK
YLTLSIIKDHPPWHIQSCCALTGEGLCQGLEWMTSRIGVR

TRTRPLE - GFP Tag - V

Restriction Sites: Sgfl-MluI



[View online >](#)

Cloning Scheme:


ACCN: NM_178815

ORF Size: 537 bp

OTI Disclaimer: The molecular sequence of this clone aligns with the gene accession number as a point of reference only. However, individual transcript sequences of the same gene can differ through naturally occurring variations (e.g. polymorphisms), each with its own valid existence. This clone is substantially in agreement with the reference, but a complete review of all prevailing variants is recommended prior to use. [More info](#)

OTI Annotation: This clone was engineered to express the complete ORF with an expression tag. Expression varies depending on the nature of the gene.

Components: The ORF clone is ion-exchange column purified and shipped in a 2D barcoded Matrix tube containing 10ug of transfection-ready, dried plasmid DNA (reconstitute with 100 ul of water).

Reconstitution Method:

1. Centrifuge at 5,000xg for 5min.
2. Carefully open the tube and add 100ul of sterile water to dissolve the DNA.
3. Close the tube and incubate for 10 minutes at room temperature.
4. Briefly vortex the tube and then do a quick spin (less than 5000xg) to concentrate the liquid at the bottom.
5. Store the suspended plasmid at -20°C. The DNA is stable for at least one year from date of shipping when stored at -20°C.

RefSeq: [NM_178815.5](#)

RefSeq Size: 3589 bp

RefSeq ORF: 540 bp

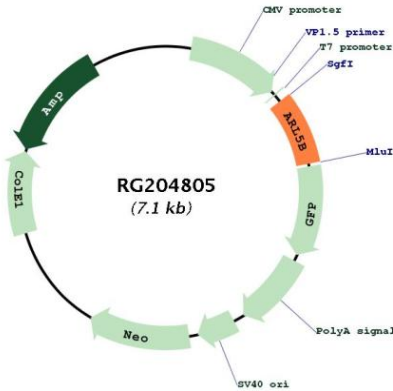
Locus ID: 221079

UniProt ID: [Q96KC2](#)

Cytogenetics: 10p12.31

Gene Summary: ARL5B (ARL8) belongs to a family of proteins that are structurally similar to ADP-ribosylation factors (ARFs; see MIM 103180). ARLs and ARFs are part of the RAS superfamily of regulatory GTPases.[supplied by OMIM, Nov 2010]

Product images:



Circular map for RG204805