

## Product datasheet for **RG204798**

### TCIM (NM\_020130) Human Tagged ORF Clone

#### Product data:

**Product Type:** Expression Plasmids  
**Product Name:** TCIM (NM\_020130) Human Tagged ORF Clone  
**Tag:** TurboGFP  
**Symbol:** TCIM  
**Synonyms:** C8orf4; TC-1; TC1  
**Mammalian Cell Selection:** Neomycin  
**Vector:** pCMV6-AC-GFP (PS100010)  
**E. coli Selection:** Ampicillin (100 ug/mL)  
**ORF Nucleotide Sequence:** >RG204798 representing NM\_020130  
Red=Cloning site Blue=ORF Green=Tags(s)

TTTTGTAATACGACTCACTATAGGGCGCCGGGAATTCGTCGACTGGATCCGGTACCGAGGAGATCTGCC  
GCC**CGGATCGCC**

ATGAAAGCAAAGCGAAGCCACCAAGCCATCATCATGTCCACGTCGCTACGAGTCAGCCCATCCATCCATG  
GCTACCACTTCGACACAGCCTCTCGTAAGAAAGCCGTGGGCAACATCTTTGAAAACACAGACCAAGAATC  
ACTAGAAAGGCTCTTCAGAACTCTGGAGACAAGAAAGCAGAGGAGAGACCAAGATCATTTTTGCCATA  
GATCAAGATGTGGAGGAGAAAACGCGTGCCTGATGGCCTGAAGAAGAGGACAAAAGACAAGCTTTTCC  
AGTTTCTGAAACTGCGGAAATATCCATCAAAGTTCAC

AG**CGGACCG**ACGCGTACGCGCCGCTCGAG - GFP Tag - GTTTAA

**Protein Sequence:** >RG204798 representing NM\_020130  
Red=Cloning site Green=Tags(s)

MKAKRSHQAIIMSTSLRVSPSIHGYPHFDASRKKAVGNIFENTDQESLERLFRNSGDKKAEERAKIIFAI  
DQDVEEKTRALMALKKRTKDKLFQFLKLRKYSIKVH

SGP**TRRRLE** - GFP Tag - V

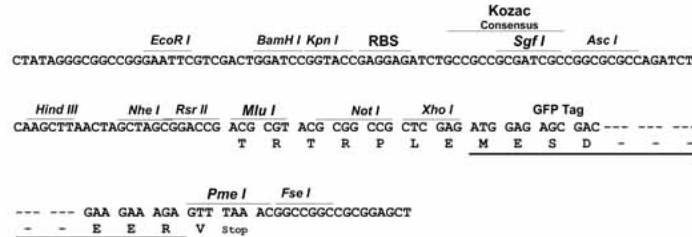
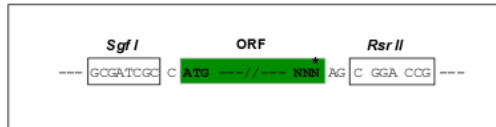
**Restriction Sites:** Sgfl-RsrII



[View online »](#)

**Cloning Scheme:**

Cloning sites used for ORF Shuttling:


**ACCN:** NM\_020130

**ORF Size:** 318 bp

**OTI Disclaimer:** The molecular sequence of this clone aligns with the gene accession number as a point of reference only. However, individual transcript sequences of the same gene can differ through naturally occurring variations (e.g. polymorphisms), each with its own valid existence. This clone is substantially in agreement with the reference, but a complete review of all prevailing variants is recommended prior to use. [More info](#)

**OTI Annotation:** This clone was engineered to express the complete ORF with an expression tag. Expression varies depending on the nature of the gene.

**Components:** The ORF clone is ion-exchange column purified and shipped in a 2D barcoded Matrix tube containing 10ug of transfection-ready, dried plasmid DNA (reconstitute with 100 ul of water).

**Reconstitution Method:**

1. Centrifuge at 5,000xg for 5min.
2. Carefully open the tube and add 100ul of sterile water to dissolve the DNA.
3. Close the tube and incubate for 10 minutes at room temperature.
4. Briefly vortex the tube and then do a quick spin (less than 5000xg) to concentrate the liquid at the bottom.
5. Store the suspended plasmid at -20°C. The DNA is stable for at least one year from date of shipping when stored at -20°C.

**RefSeq:** [NM\\_020130.4](#)
**RefSeq Size:** 1488 bp

**RefSeq ORF:** 321 bp

Locus ID: 56892

UniProt ID: [Q9NR00](#)

Cytogenetics: 8p11.21

**Gene Summary:** This gene encodes a small, monomeric, predominantly unstructured protein that functions as a positive regulator of the Wnt/beta-catenin signaling pathway. This protein interacts with a repressor of beta-catenin mediated transcription at nuclear speckles. It is thought to competitively block interactions of the repressor with beta-catenin, resulting in up-regulation of beta-catenin target genes. The encoded protein may also play a role in the NF-kappaB and ERK1/2 signaling pathways. Expression of this gene may play a role in the proliferation of several types of cancer including thyroid cancer, breast cancer and hematological malignancies. [provided by RefSeq, Nov 2011]

**Product images:**



Circular map for RG204798