

## Product datasheet for **RG204714**

### Apolipoprotein CIV (APOC4) (NM\_001646) Human Tagged ORF Clone

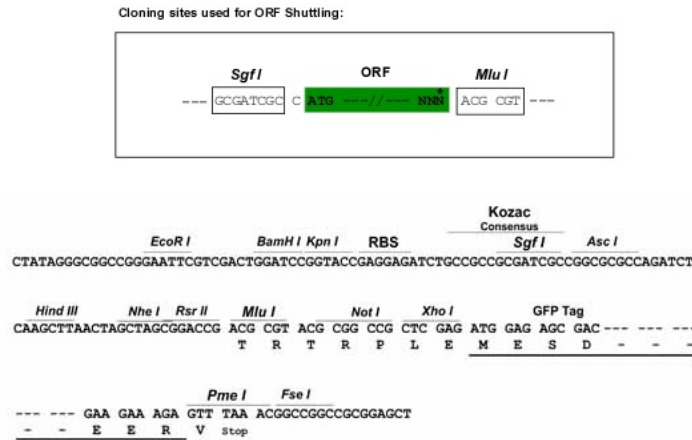
#### Product data:

Product Type:	Expression Plasmids
Product Name:	Apolipoprotein CIV (APOC4) (NM_001646) Human Tagged ORF Clone
Tag:	TurboGFP
Symbol:	APOC4
Synonyms:	APO-CIV; APOC-IV
Mammalian Cell Selection:	Neomycin
Vector:	pCMV6-AC-GFP (PS100010)
E. coli Selection:	Ampicillin (100 ug/mL)
ORF Nucleotide Sequence:	<p>&gt;RG204714 representing NM_001646  <b>Red</b>=Cloning site <b>Blue</b>=ORF <b>Green</b>=Tags(s)</p> <p>TTTTGTAATACGACTCACTATAGGGCGGCCGGAATTCGTCGACTGGATCCGGTACCGAGGAGATCTGCC  GCC<b>CGATCGCC</b></p> <p>ATGTCCCTCCTCAGAAACAGGCTCCAGGCCCTGCCTGCCCTGTGCTCTGCGTGCTGGTCTGGCCTGCA  TTGGGGCATGCCAGCCAGAGGCCAGGAAGAACCTGAGCCCCACCAAAGCTAAAGATGAGTCGCTG  GAGCCTGGTGAGGGCAGGATGAAGGAGCTGCTGGAGACAGTGGTGAACAGGACCAGAGACGGGTGGCAA  TGGTCTGGAGCCCGAGCACCTCCGGGGCTTCATGCAGACCTACTATGACGACCACCTGAGGGACCTGG  GTCCGCTACCAAGGCCGGTTCCTCGAATCCAAGACAGCCTCTGAAGAAGACCCACAGCCTGTGCC  CAGGCTTGTCTGTGGGACAAGGACCAGGT</p> <p><b>ACGCGTACGCGGCCGCTCGAG</b> - GFP Tag - GTTTAA</p>
Protein Sequence:	<p>&gt;RG204714 representing NM_001646  <b>Red</b>=Cloning site <b>Green</b>=Tags(s)</p> <p>MSLLRNRLQALPALCLCVLVLACIGACQPEAQEGLSPPPKMKMSRWSLVRGRMKELLETVVNRTRDQWQ  WFWSPTFRGMQTYDDHLRDLGPLTKAWFLESKDSLLKTHSLCPRLVCGDKDQG</p> <p><b>TRTRPLE</b> - GFP Tag - V</p>
Restriction Sites:	Sgfl-MluI

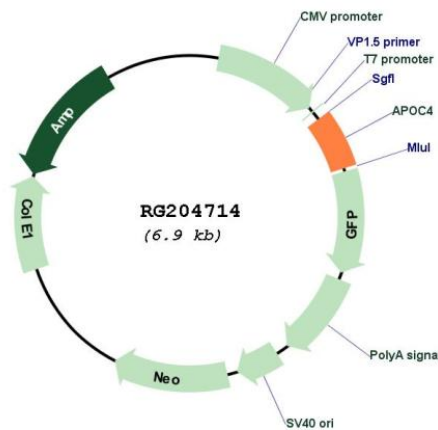


[View online »](#)

**Cloning Scheme:**



**Plasmid Map:**



**ACCN:** NM\_001646

**ORF Size:** 381 bp

**OTI Disclaimer:** The molecular sequence of this clone aligns with the gene accession number as a point of reference only. However, individual transcript sequences of the same gene can differ through naturally occurring variations (e.g. polymorphisms), each with its own valid existence. This clone is substantially in agreement with the reference, but a complete review of all prevailing variants is recommended prior to use. [More info](#)

<b>OTI Annotation:</b>	This clone was engineered to express the complete ORF with an expression tag. Expression varies depending on the nature of the gene.
<b>Components:</b>	The ORF clone is ion-exchange column purified and shipped in a 2D barcoded Matrix tube containing 10ug of transfection-ready, dried plasmid DNA (reconstitute with 100 ul of water).
<b>Reconstitution Method:</b>	<ol style="list-style-type: none"><li>1. Centrifuge at 5,000xg for 5min.</li><li>2. Carefully open the tube and add 100ul of sterile water to dissolve the DNA.</li><li>3. Close the tube and incubate for 10 minutes at room temperature.</li><li>4. Briefly vortex the tube and then do a quick spin (less than 5000xg) to concentrate the liquid at the bottom.</li><li>5. Store the suspended plasmid at -20°C. The DNA is stable for at least one year from date of shipping when stored at -20°C.</li></ol>
<b>RefSeq:</b>	<a href="#">NM_001646.3</a>
<b>RefSeq Size:</b>	613 bp
<b>RefSeq ORF:</b>	384 bp
<b>Locus ID:</b>	346
<b>UniProt ID:</b>	<a href="#">P55056</a>
<b>Cytogenetics:</b>	19q13.32
<b>Protein Families:</b>	Secreted Protein
<b>Gene Summary:</b>	This gene encodes a lipid-binding protein belonging to the apolipoprotein gene family. The protein is thought to play a role in lipid metabolism. Polymorphisms in this gene may influence circulating lipid levels and may be associated with coronary artery disease risk. This gene is present in a cluster with other related apolipoprotein genes on chromosome 19. Naturally occurring read-through transcription exists between this gene and the neighboring downstream apolipoprotein C-II (APOC2) gene. [provided by RefSeq, Mar 2011]