

Product datasheet for **RG204669**

Langerin (CD207) (NM_015717) Human Tagged ORF Clone

Product data:

Product Type:	Expression Plasmids
Product Name:	Langerin (CD207) (NM_015717) Human Tagged ORF Clone
Tag:	TurboGFP
Symbol:	Langerin
Synonyms:	CLEC4K
Mammalian Cell Selection:	Neomycin
Vector:	pCMV6-AC-GFP (PS100010)
E. coli Selection:	Ampicillin (100 ug/mL)
ORF Nucleotide Sequence:	>RG204669 representing NM_015717 Red=Cloning site Blue=ORF Green=Tags(s)

TTTTGTAATACGACTCACTATAGGGCGGCCGGAATTCGTCGACTGGATCCGGTACCGAGGAGATCTGCC
GCC**CGATCGCC**

ATGACTGTGGAGAAGGAGGCCCTGATGCGCACTTCACTGTGGACAAACAGAACATCTCCCTCTGGCCCC
GAGAGCCTCCTCCAAGTCCGGTCCATCTCTGGTCCCGGGGAAAACACCCACAGTCCGTGCTGCATTAAT
CTGCCTGACGCTGGTCTGGTCCCTCCGCTCTGCTGCAGGCCGCTTTATCCCGGTTTATGGGCACC
ATATCAGATGTAAGACCAATGTCCAGTTGCTGAAAGGTCGTGTGGACAACATCAGCACCTGGATTCTG
AAATTAAGAAAGTGTGACGGCATGGAGGCAGCTGGCGTTCAGATCCAGATGGTGAATGAGAGCCTGGG
TTATGTGCGTTCTCAGTTCTGAAGTAAAAACAGTGTGGAGAAGGCCAACGCACAGATCCAGATCTTA
ACAAGAAGTTGGGAAGAAGTCACTACCTTAAATGCCCAAATCCCAGAGTTAAAAAGTGATTTGGAGAAAG
CCAGTGTCTTAAATACAAAGATCCGGGCACTCCAGGGCAGCTTGGAGAATATGAGCAAGTTGCTCAAACG
ACAAAAATGATATTCTACAGGTGGTTTCTCAAGGCTGGAAGTACTTCAAGGGGAACCTTATTACTTTTCT
CTCATTCCAAAGACCTGGTATAGTGCCGAGCAGTTCTGTGTGTCCAGGAATTCACACCTGACCTCGGTGA
CCTCAGAGAGTGAGCAGGAGTTTCTGTATAAAACAGCGGGGGGACTCATCTACTGGATTGGCCTGACTAA
AGCAGGGATGGAAGGGGACTGGTCTGGGTGGATGACACGCCATTCAACAAGTCCAAAGTGGCAGGTTTC
TGGATTCCAGGTGAGCCCAACAATGCTGGGAACAATGAACACTGTGGCAATATAAAGGCTCCCTCACTTC
AGGCCTGGAATGATGCCCATGTGACAAAACGTTTCTTTTCATTTGTAAGCGACCCTATGTCCCATCAGA
ACCG

ACGCGTACGCGGCCGCTCGAG - GFP Tag - GTTTAA



[View online »](#)

Protein Sequence: >RG204669 representing NM_015717
Red=Cloning site Green=Tags(s)

MTVEKEAPDAHFTVDKQNISLWPREPPPKSGPSLVPGKTPTVRAALICLTLVLVASVLLQAVLYPRFMGT
 ISDVKTNVQLLKGRVDNISTLDSEIKKNSDGMEEAAGVQIQMVNESLGYVRSQFLKLT SVEKANAQIQIL
 TRSWEEVSTLNAQIPELKS DLEKASALNTKIRALQGSLENMSKLLKRQNDILQVVSQGWKYFKGNFYFYS
 LIPKTWYSAEQFCVSRNSHLTSVTSESEQEFLYKTAGGLIYWIGLTKAGMEGDWSWVDDTPFNKVQSARF
 WIPGEPNNAAGNEHCNLIKAPSLQAWNDAPCDKTFILICKRPYVPSEP

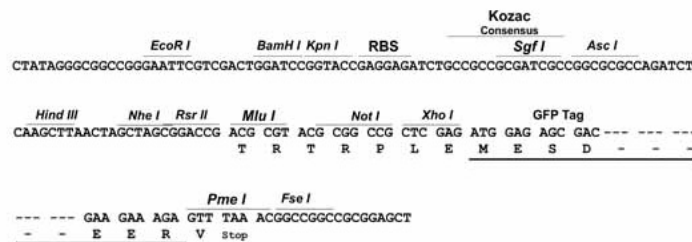
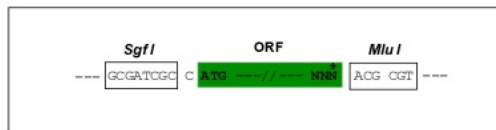
TRTRPLE - GFP Tag - V

Chromatograms: https://cdn.origene.com/chromatograms/ja3367_e07.zip

Restriction Sites: SgfI-MluI

Cloning Scheme:

Cloning sites used for ORF Shuttling:



ACCN: NM_015717

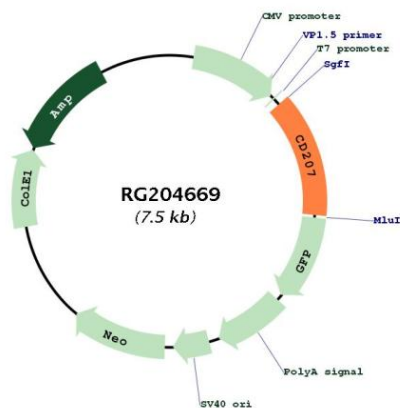
ORF Size: 984 bp

OTI Disclaimer: Due to the inherent nature of this plasmid, standard methods to replicate additional amounts of DNA in *E. coli* are highly likely to result in mutations and/or rearrangements. Therefore, OriGene does not guarantee the capability to replicate this plasmid DNA. Additional amounts of DNA can be purchased from OriGene with batch-specific, full-sequence verification at a reduced cost. Please contact our customer care team at custsupport@origene.com or by calling 301.340.3188 option 3 for pricing and delivery.

The molecular sequence of this clone aligns with the gene accession number as a point of reference only. However, individual transcript sequences of the same gene can differ through naturally occurring variations (e.g. polymorphisms), each with its own valid existence. This clone is substantially in agreement with the reference, but a complete review of all prevailing variants is recommended prior to use. [More info](#)

OTI Annotation:	This clone was engineered to express the complete ORF with an expression tag. Expression varies depending on the nature of the gene.
Components:	The ORF clone is ion-exchange column purified and shipped in a 2D barcoded Matrix tube containing 10ug of transfection-ready, dried plasmid DNA (reconstitute with 100 ul of water).
Reconstitution Method:	<ol style="list-style-type: none">1. Centrifuge at 5,000xg for 5min.2. Carefully open the tube and add 100ul of sterile water to dissolve the DNA.3. Close the tube and incubate for 10 minutes at room temperature.4. Briefly vortex the tube and then do a quick spin (less than 5000xg) to concentrate the liquid at the bottom.5. Store the suspended plasmid at -20°C. The DNA is stable for at least one year from date of shipping when stored at -20°C.
RefSeq:	NM_015717.3
RefSeq Size:	1886 bp
RefSeq ORF:	987 bp
Locus ID:	50489
UniProt ID:	Q9UJ71
Cytogenetics:	2p13.3
Protein Families:	Druggable Genome, Transmembrane
Gene Summary:	The protein encoded by this gene is expressed only in Langerhans cells which are immature dendritic cells of the epidermis and mucosa. It is localized in the Birbeck granules, organelles present in the cytoplasm of Langerhans cells and consisting of superimposed and zippered membranes. It is a C-type lectin with mannose binding specificity, and it has been proposed that mannose binding by this protein leads to internalization of antigen into Birbeck granules and providing access to a nonclassical antigen-processing pathway. Mutations in this gene result in Birbeck granules deficiency or loss of sugar binding activity. [provided by RefSeq, Aug 2010]

Product images:



Circular map for RG204669