

Product datasheet for **RG204647**

MRPL35 (NM_145644) Human Tagged ORF Clone

Product data:

Product Type: Expression Plasmids
Product Name: MRPL35 (NM_145644) Human Tagged ORF Clone
Tag: TurboGFP
Symbol: MRPL35
Synonyms: L35mt; MRP-L35
Mammalian Cell Selection: Neomycin
Vector: pCMV6-AC-GFP (PS100010)
E. coli Selection: Ampicillin (100 ug/mL)
ORF Nucleotide Sequence: >RG204647 representing NM_145644
Red=Cloning site Blue=ORF Green=Tags(s)

TTTTGTAATACGACTCACTATAGGGCGCCGGGAATTCGTCGACTGGATCCGGTACCGAGGAGATCTGCC
GCC**CGATCGCC**

ATGGCTGCCTCTGCCTTTGCTGGTGCAGTGAGAGCAGCTTCAGGAATCCTACGGTCCCTGAATATTTGACATCTTCAACCTACCGCAACTGTGTCAAGAATGCCTCTCTTATTTCTGCATTGTCCACTGGACGTTTTAGTCATATTCAGACACCAGTTGTTTCCTCCACTCCCAGACTTACCACATCTGAGAGAAACCTGACATGTGGGCATACCTCAGTGATCCTTAATAGAATGGCCCCGTGCTCCAAGTGTCTGAAGCTGCCAGTCAGATCTCTAACATACTTCAGTGAAGAAAAGCAAGAGAAAGACCGTGAAAGCTGTCATCGATAGGTTTCTTCGACTTCATTGTGGCCTTTGGGTGAGGAGAAAGGCTGGCTATAAGAAAAAATTATGGAAAAAGACACCTGCAAGGAAGAAGCGATTGAGGGAATTTGTATTCTGCAATAAAACCCAGAGTAAACTCTTAGATAAAATGACGACGTCCTTCTGGAAGAGGCGAAAC

ACGCGTACGCGGCCGCTCGAG - GFP Tag - GTTTAA

Protein Sequence: >RG204647 representing NM_145644
Red=Cloning site Green=Tags(s)

MAASAFAGAVRAASGILRSLNILTSSTYRNCVKNASLISALSTGRFSHIQTPVVSSTPRLTTSERNLTCGHTSVILNRMAPVLPVSLKLPVRSITYFSARKGKRKTVKAVIDRFLRLHCGLWVRRKAGYKKLWKKTPARKKRLREFVFCNKTQSKLLDKMTTSFWKRRN

TRTRPLE - GFP Tag - V

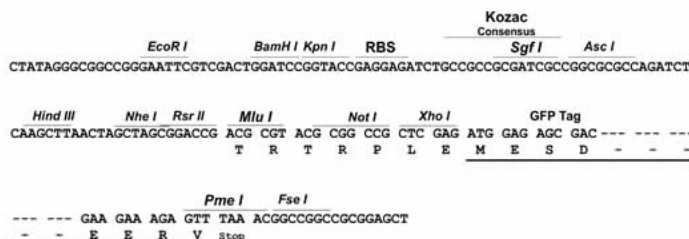
Restriction Sites: Sgfl-MluI



[View online »](#)

Cloning Scheme:

Cloning sites used for ORF Shutting:


ACCN: NM_145644

ORF Size: 510 bp

OTI Disclaimer: The molecular sequence of this clone aligns with the gene accession number as a point of reference only. However, individual transcript sequences of the same gene can differ through naturally occurring variations (e.g. polymorphisms), each with its own valid existence. This clone is substantially in agreement with the reference, but a complete review of all prevailing variants is recommended prior to use. [More info](#)

OTI Annotation: This clone was engineered to express the complete ORF with an expression tag. Expression varies depending on the nature of the gene.

Components: The ORF clone is ion-exchange column purified and shipped in a 2D barcoded Matrix tube containing 10ug of transfection-ready, dried plasmid DNA (reconstitute with 100 ul of water).

Reconstitution Method:

1. Centrifuge at 5,000xg for 5min.
2. Carefully open the tube and add 100ul of sterile water to dissolve the DNA.
3. Close the tube and incubate for 10 minutes at room temperature.
4. Briefly vortex the tube and then do a quick spin (less than 5000xg) to concentrate the liquid at the bottom.
5. Store the suspended plasmid at -20°C. The DNA is stable for at least one year from date of shipping when stored at -20°C.

RefSeq: [NM_145644.1](#), [NP_663619.1](#)
RefSeq Size: 997 bp

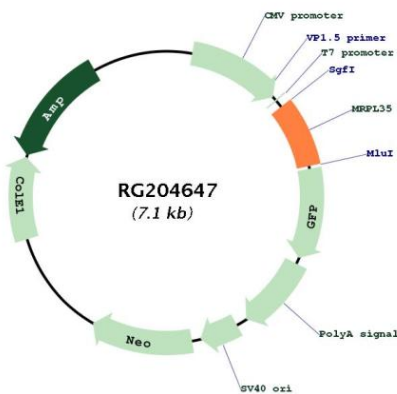
RefSeq ORF: 513 bp

Locus ID: 51318

UniProt ID: [Q9NZE8](#)

Cytogenetics:	2p11.2
Protein Families:	Druggable Genome
Gene Summary:	<p>Mammalian mitochondrial ribosomal proteins are encoded by nuclear genes and help in protein synthesis within the mitochondrion. Mitochondrial ribosomes (mitoribosomes) consist of a small 28S subunit and a large 39S subunit. They have an estimated 75% protein to rRNA composition compared to prokaryotic ribosomes, where this ratio is reversed. Another difference between mammalian mitoribosomes and prokaryotic ribosomes is that the latter contain a 5S rRNA. Among different species, the proteins comprising the mitoribosome differ greatly in sequence, and sometimes in biochemical properties, which prevents easy recognition by sequence homology. This gene encodes a 39S subunit protein. Sequence analysis identified three transcript variants. Pseudogenes corresponding to this gene are found on chromosomes 6p, 10q, and Xp. [provided by RefSeq, Jul 2008]</p>

Product images:



Circular map for RG204647