

Product datasheet for **RG204643**

TFB1M (NM_016020) Human Tagged ORF Clone

Product data:

Product Type:	Expression Plasmids
Product Name:	TFB1M (NM_016020) Human Tagged ORF Clone
Tag:	TurboGFP
Symbol:	TFB1M
Synonyms:	CGI-75; CGI75; mtTFB; mtTFB1
Mammalian Cell Selection:	Neomycin
Vector:	pCMV6-AC-GFP (PS100010)
E. coli Selection:	Ampicillin (100 ug/mL)
ORF Nucleotide Sequence:	>RG204643 representing NM_016020 Red=Cloning site Blue=ORF Green=Tags(s)

TTTTGTAATACGACTCACTATAGGGCGCCGGGAATTCGTCGACTGGATCCGGTACCGAGGAGATCTGCC
GCC**CGATCGCC**

ATGGCTGCCTCCGAAAACCTCAGCACTTGCCGTCTCCCTCCGTTGCCACGATTCGAGAAATCATTAAAGT
TGTTAAGACTGCAAGCAGCGAAGCAGCTATCACAGAATTCCTCCTGGACTTGAGGCTGACAGATAAGAT
TGTAAGGAAAGCTGGCAATCTGACAAATGCTTATGTTTACGAAGTGGCCCTGGCCAGGGGAATCACA
AGATCTATTCTTAATGCCGACGTCGCTGAACTTCTGGTGGTTGAAAAGGACACTCGATTTATTCCTGGAT
TACAGATGCTTTCTGATGCAGCACCTGGGAAACTGAGAATTGTTTCATGGAGATGTCTTGACATTTAAGGT
AGAAAAGGCTTTTTTCAGAAAGTCTTAAAAGACCTGGGAAGATGATCCTCAAATGTACATATTATTGGA
AATCTGCCTTTTAGTGTTTCAACTCCACTGATTATCAAGTGGCTTAAAAATTTTCTGTAGAGATGGAC
CTTTTGTTATGGCAGAAGCTCAGATGACTTTGACTTTTCAAAGGAAGTGGCAGAGAGACTTGCAGCCAA
TACAGGAAGCAACAGCGTAGTCGCCTCTCTGTTATGGCTCAGTACCTCTGCAATGTTTCGACACATCTTT
ACGATTCAGGACAAGCTTTGTCCCAAACCAGAGGTGGACGTGGGCGTGGTGCACCTCACTCCCTTGA
TACAGCCCAAGATAGAGCAGCCATTCAAGCTGGTGGAAAAAGTGGTTCAGAATGTATTTTCAGTCCGGAAG
GAAATACTGCCATCGAGGGCTCAGAATGTTATTCCTGAAGCGCAGCGCTTGGAAAGCACGGGCAGGCTG
TTAGAGTTGGCAGACATAGACCCTACTCTCGGCCCGCCAGCTCTCCATCTCACATTTAAGAGCCTCT
GTGATGTATACAGAAAAATGTTGATGAAGACCCACAACCTTTTGCATATAATTTTCAGAGAAGAACTCAA
GCGAAGAAAAAGCAAAAATGAAGAAAAAGAAGAGGATGACGCAGAGAATTACAGACTC

ACGCGTACGCGGCCGCTCGAG - GFP Tag - GTTTAA



[View online »](#)

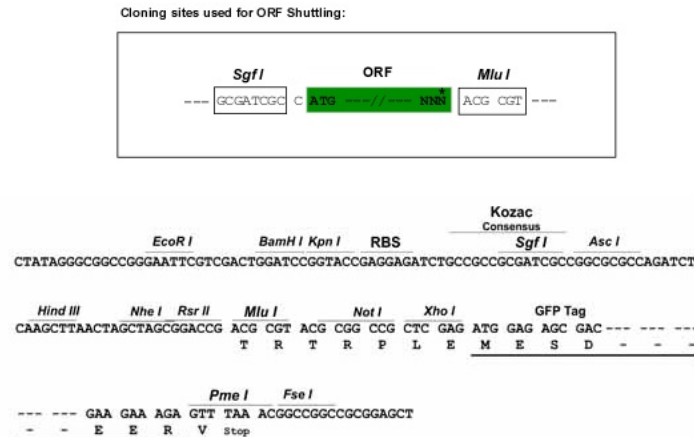
Protein Sequence: >RG204643 representing NM_016020
 Red=Cloning site Green=Tags(s)

MAASGKLSLCRLPPLPTIREIIKLLRLQAAKQLSQNFLDLRLTDKIVRKAGNL TNAVYVEVGPGGIT
 RSILNADVAELLVVEKDTRFIPGLQMLSDAAPGKLRIVHGDVLT FKVKEAFSESLKRPWEDDPPNVHIIG
 NLPFSVSTPLIIKWLENI SCRDPFVYGRQMTLTFQKEVAERLAANTGSKQRSLSVMAQYLCNVRHIF
 TIPGQAFVPKPEVDVGVVHFTPLIQPKIEQPFKLVKVVQNVVFQFRKYCHRGLRMLFPEAQRLESTGRL
 LELADIDPTLRPRQLSISHFKSLCDVYRKMCEDEPQLFAYNFREELKRRKSKNEEKEEDDAENYRL

TRTRPLE - GFP Tag - V

Restriction Sites: SgfI-MluI

Cloning Scheme:



ACCN: NM_016020

ORF Size: 1038 bp

OTI Disclaimer: The molecular sequence of this clone aligns with the gene accession number as a point of reference only. However, individual transcript sequences of the same gene can differ through naturally occurring variations (e.g. polymorphisms), each with its own valid existence. This clone is substantially in agreement with the reference, but a complete review of all prevailing variants is recommended prior to use. [More info](#)

OTI Annotation: This clone was engineered to express the complete ORF with an expression tag. Expression varies depending on the nature of the gene.

Components: The ORF clone is ion-exchange column purified and shipped in a 2D barcoded Matrix tube containing 10ug of transfection-ready, dried plasmid DNA (reconstitute with 100 ul of water).

Reconstitution Method:

1. Centrifuge at 5,000xg for 5min.
2. Carefully open the tube and add 100ul of sterile water to dissolve the DNA.
3. Close the tube and incubate for 10 minutes at room temperature.
4. Briefly vortex the tube and then do a quick spin (less than 5000xg) to concentrate the liquid at the bottom.
5. Store the suspended plasmid at -20°C. The DNA is stable for at least one year from date of shipping when stored at -20°C.

RefSeq: [NM_016020.4](#)

RefSeq Size: 1290 bp

RefSeq ORF: 1041 bp

Locus ID: 51106

UniProt ID: [Q8WVM0](#)

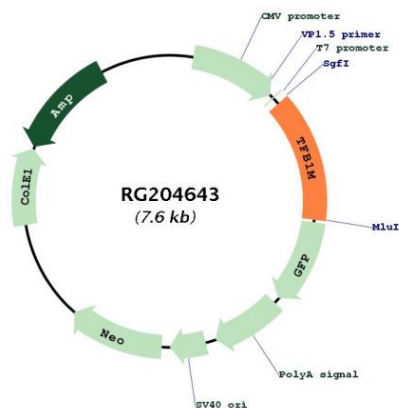
Cytogenetics: 6q25.3

Domains: rADc

Protein Families: Transcription Factors

Gene Summary: The protein encoded by this gene is a dimethyltransferase that methylates the conserved stem loop of mitochondrial 12S rRNA. The encoded protein also is part of the basal mitochondrial transcription complex and is necessary for mitochondrial gene expression. The methylation and transcriptional activities of this protein are independent of one another. Variations in this gene may influence the severity of aminoglycoside-induced deafness (AID). [provided by RefSeq, Aug 2010]

Product images:



Circular map for RG204643