

## Product datasheet for **RG204629**

### Alpha 1 Acid Glycoprotein (ORM1) (NM\_000607) Human Tagged ORF Clone

#### Product data:

**Product Type:** Expression Plasmids  
**Product Name:** Alpha 1 Acid Glycoprotein (ORM1) (NM\_000607) Human Tagged ORF Clone  
**Tag:** TurboGFP  
**Symbol:** Alpha 1 Acid Glycoprotein  
**Synonyms:** AGP-A; AGP1; HEL-S-153w; ORM  
**Mammalian Cell Selection:** Neomycin  
**Vector:** pCMV6-AC-GFP (PS100010)  
**E. coli Selection:** Ampicillin (100 ug/mL)  
**ORF Nucleotide Sequence:** >RG204629 representing NM\_000607  
 Red=Cloning site Blue=ORF Green=Tags(s)

TTTTGTAATACGACTCACTATAGGGCGCCGGGAATTCGTCGACTGGATCCGGTACCGAGGAGATCTGCC  
 GCC**CGATCGCC**

ATGGCGCTGTCTGGTTCTTACAGTCCTGAGCCTCTACCTCTGCTGGAAGCCAGATCCCATTGTGTG  
 CCAACCTAGTACCGGTGCCCATACCAACGCCACCCTGGACCGGATCACTGGCAAGTGGTTTTATATCGC  
 ATCGGCTTTTCAAACGAGGAGTACAATAAGTCGGTTCAGGAGATCCAAGCAACCTTCTTTTACTTCACC  
 CCCAACAGACAGAGGACAGCATCTTTCTCAGAGAGTACCAGACCCGACAGGACCAGTGCATCTATAACA  
 CCACCTACCTGAATGTCCAGCGGAAAAATGGGACCATCTCCAGATACGTGGGAGGCAAGAGCATTTCGC  
 TCACTTGCTGATCCTCAGGGACACCAAGACCTACATGCTTGTCTTTGACGTGAACGATGAGAAGAACTGG  
 GGGCTGTCTGTCTATGCTGACAAGCCAGAGACGACCAAGGAGCAACTGGGAGAGTTCTACGAAGCTCTCG  
 ACTGCTTGCGCATTCCCAAGTCAGATGTCGTGTACACCGATTGGAAAAAGGATAAGTGTGAGCCACTGGA  
 GAAGCAGCACGAGAAGGAGAGGAAACAGGAGGAGGGGGAATCC

**ACGCGTACGCGGCCGCTCGAG** - GFP Tag - GTTTAA

**Protein Sequence:** >RG204629 representing NM\_000607  
 Red=Cloning site Green=Tags(s)

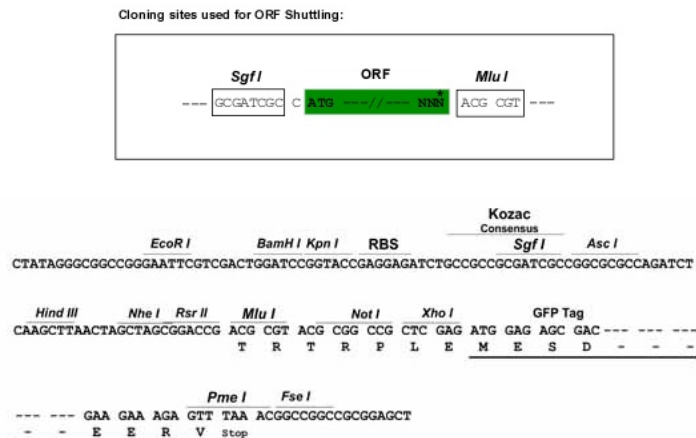
MALSWLTVLSLLPLLEAQIPLCANLVPVITNATLDRITGKWFYIASAFRNEEYKNSVQEIQATFFYFT  
 PNKTEDTIFLREYQTRQDQCIYNTTYLNVQRENGTISRYVGGQEHFAHLLILRDTKTYMLAFDVNDEKNW  
 GLSVYADKPETTKEQLGEFYEALDCLRIPKSDVVYTDWKKDKCEPLEKQHEKERKQEEGES

**TRTRPLE** - GFP Tag - V

**Restriction Sites:** SgfI-MluI



[View online »](#)

**Cloning Scheme:**


**ACCN:** NM\_000607

**ORF Size:** 603 bp

**OTI Disclaimer:** The molecular sequence of this clone aligns with the gene accession number as a point of reference only. However, individual transcript sequences of the same gene can differ through naturally occurring variations (e.g. polymorphisms), each with its own valid existence. This clone is substantially in agreement with the reference, but a complete review of all prevailing variants is recommended prior to use. [More info](#)

**OTI Annotation:** This clone was engineered to express the complete ORF with an expression tag. Expression varies depending on the nature of the gene.

**Components:** The ORF clone is ion-exchange column purified and shipped in a 2D barcoded Matrix tube containing 10ug of transfection-ready, dried plasmid DNA (reconstitute with 100 ul of water).

**Reconstitution Method:**

1. Centrifuge at 5,000xg for 5min.
2. Carefully open the tube and add 100ul of sterile water to dissolve the DNA.
3. Close the tube and incubate for 10 minutes at room temperature.
4. Briefly vortex the tube and then do a quick spin (less than 5000xg) to concentrate the liquid at the bottom.
5. Store the suspended plasmid at -20°C. The DNA is stable for at least one year from date of shipping when stored at -20°C.

**RefSeq:** [NM\\_000607.4](#)

**RefSeq Size:** 803 bp

**RefSeq ORF:** 606 bp

**Locus ID:** 5004

**UniProt ID:** [P02763](#)

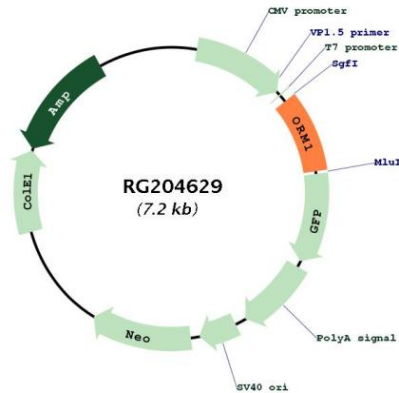
**Cytogenetics:** 9q32

**Domains:** lipocalin

**Protein Families:** Druggable Genome, Secreted Protein

**Gene Summary:** This gene encodes a key acute phase plasma protein. Because of its increase due to acute inflammation, this protein is classified as an acute-phase reactant. The specific function of this protein has not yet been determined; however, it may be involved in aspects of immunosuppression. [provided by RefSeq, Jul 2008]

**Product images:**



Circular map for RG204629