

Product datasheet for **RG204619**

Syndecan 4 (SDC4) (NM_002999) Human Tagged ORF Clone

Product data:

Product Type: Expression Plasmids
Product Name: Syndecan 4 (SDC4) (NM_002999) Human Tagged ORF Clone
Tag: TurboGFP
Symbol: Syndecan 4
Synonyms: SYND4
Mammalian Cell Selection: Neomycin
Vector: pCMV6-AC-GFP (PS100010)
E. coli Selection: Ampicillin (100 ug/mL)
ORF Nucleotide Sequence: >RG204619 representing NM_002999
Red=Cloning site Blue=ORF Green=Tags(s)

TTTTGTAATACGACTCACTATAGGGCGGCCGGAATTCGTCGACTGGATCCGGTACCGAGGAGATCTGCC
GCC**CGATCGCC**

ATGGCCCCGCCCGTCTGTTTCGGCTGCTGCTGTTCTTCGTAGGCGGAGTCGCCGAGTCGATCCGAGAGA
CTGAGGTCATCGACCCAGGACCTCCTAGAAGGCCGATACTTCTCCGGAGCCCTACCAGACGATGAGGA
TGTAGTGGGGCCGGCAGGAATCTGATGACTTTGAGCTGTCTGGCTCTGGAGATCTGGATGACTTGGAA
GACTCCATGATCGGCCCTGAAGTTGTCCATCCCTTGGTGCCTCTAGATAACCATATCCCTGAGAGGGCAG
GGTCTGGGAGCCAAGTCCCACCGAACCAAGAACTAGAGGAGAATGAGGTTATCCCCAAGAGAATCTC
ACCCGTTGAAGAGAGTGAGGATGTGTCCAACAAGGTGCAATGTCCAGCACTGTGCAGGGCAGCAACATC
TTTGAGAGAACGGAGGTCTGGCAGCTCTGATTGTGGGTGGCATCGTGGGCATCCTCTTTGCCGTCTTCC
TGATCCTACTGCTCATGTACCGTATGAAGAAGAAGGATGAAGGCAGCTATGACCTGGGCAAGAAACCCAT
CTACAAGAAAGCCCCACCAATGAGTTCTACGCG

AG**CGGACCG**ACGCGTACGCGGCCGCTCGAG - GFP Tag - GTTTAA

Protein Sequence: >RG204619 representing NM_002999
Red=Cloning site Green=Tags(s)

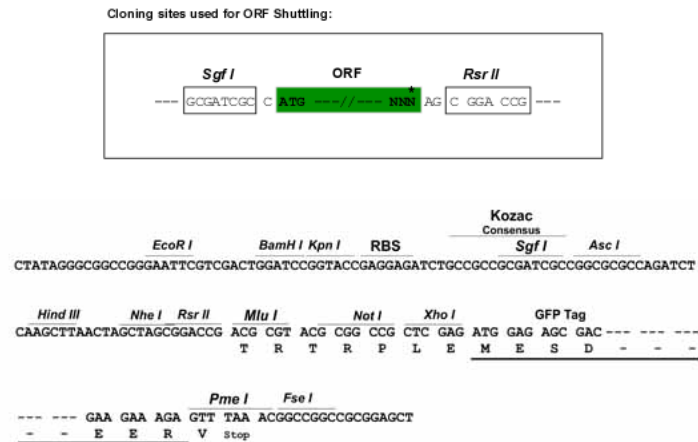
MAPARLFALLFFVGGVAESIRETEVIDPQDLLEGRYFSGALPDEEDVVGPGQESDDFELSGSGDLDDLE
DSMIGPEVVHPLVPLDNHUPERAGSGSQVPTPKKLEENEVIPKRISPVEESEDVSNKVSMSSTVQGSNI
FERTEVLAALIVGGIVGILFAVFLILLMYRMKKKDEGSYDLGKKPIYKKAPTNEFYA

SGP**TRRRLE** - GFP Tag - V

Restriction Sites: Sgfl-RsrII



[View online »](#)

Cloning Scheme:


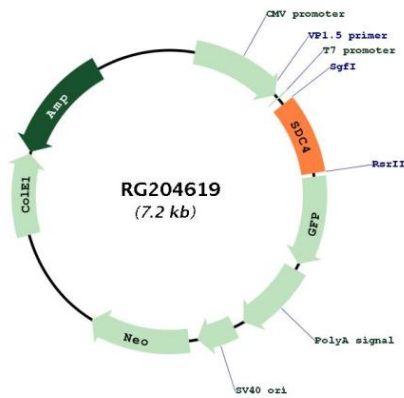
ACCN:	NM_002999
ORF Size:	594 bp
OTI Disclaimer:	The molecular sequence of this clone aligns with the gene accession number as a point of reference only. However, individual transcript sequences of the same gene can differ through naturally occurring variations (e.g. polymorphisms), each with its own valid existence. This clone is substantially in agreement with the reference, but a complete review of all prevailing variants is recommended prior to use. More info
OTI Annotation:	This clone was engineered to express the complete ORF with an expression tag. Expression varies depending on the nature of the gene.
Components:	The ORF clone is ion-exchange column purified and shipped in a 2D barcoded Matrix tube containing 10ug of transfection-ready, dried plasmid DNA (reconstitute with 100 ul of water).
Reconstitution Method:	<ol style="list-style-type: none"> 1. Centrifuge at 5,000xg for 5min. 2. Carefully open the tube and add 100ul of sterile water to dissolve the DNA. 3. Close the tube and incubate for 10 minutes at room temperature. 4. Briefly vortex the tube and then do a quick spin (less than 5000xg) to concentrate the liquid at the bottom. 5. Store the suspended plasmid at -20°C. The DNA is stable for at least one year from date of shipping when stored at -20°C.
RefSeq:	NM_002999.4
RefSeq Size:	2640 bp
RefSeq ORF:	597 bp
Locus ID:	6385
UniProt ID:	P31431
Cytogenetics:	20q13.12

Protein Families: Druggable Genome, Transmembrane

Protein Pathways: Cell adhesion molecules (CAMs), ECM-receptor interaction

Gene Summary: The protein encoded by this gene is a transmembrane (type I) heparan sulfate proteoglycan that functions as a receptor in intracellular signaling. The encoded protein is found as a homodimer and is a member of the syndecan proteoglycan family. This gene is found on chromosome 20, while a pseudogene has been found on chromosome 22. [provided by RefSeq, Jul 2008]

Product images:



Circular map for RG204619