

Product datasheet for **RG204573**

GCP2 (CXCL6) (NM_002993) Human Tagged ORF Clone

Product data:

Product Type: Expression Plasmids
Product Name: GCP2 (CXCL6) (NM_002993) Human Tagged ORF Clone
Tag: TurboGFP
Symbol: GCP2
Synonyms: CKA-3; GCP-2; GCP2; SCYB6
Mammalian Cell Selection: Neomycin
Vector: pCMV6-AC-GFP (PS100010)
E. coli Selection: Ampicillin (100 ug/mL)
ORF Nucleotide Sequence: >RG204573 representing NM_002993
Red=Cloning site Blue=ORF Green=Tags(s)

TTTTGTAATACGACTCACTATAGGGCGGCCGGAATTCGTCGACTGGATCCGGTACCGAGGAGATCTGCC
GCC**CGATCGCC**

ATGAGCCTCCCGTCCAGCCGCGCGGCCCGTGTCCCGGGTCTTCGGGCTCCTTGTCGCGCTGCTCGCGC
TGCTGCTCCTGCTGACGCCGCGGGGCCCTCGCCAGCGCTGGTCTGTCTGTGCTGACAGAGCT
GCGTTGCACTTGTACGCGTTACGCTGAGAGTAAACCCAAAACGATTGGTAACTGCAGGTGTTCCCC
GCAGGCCCGAGTCTCAAGGTGGAAGTGGTAGCCTCCCTGAAGAACGGGAAGCAAGTTTGTCTGGACC
CGGAAGCCCTTTCTAAAGAAAGTCATCCAGAAAATTTGGACAGTGGAAACAAGAAAAAC

AG**CGGACCG**ACGCGTACGCGGCCGCTCGAG - GFP Tag - GTTTAA

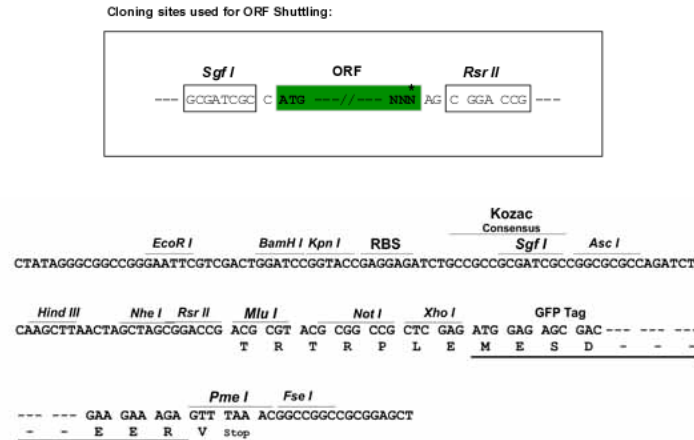
Protein Sequence: >RG204573 representing NM_002993
Red=Cloning site Green=Tags(s)
MSLPSSRAARVPGPSGLCALLALLLLLTPPGPLASAGPVSAVLTELRCTLRVTLRVNPKTIGKLQVFP
AGPQCSKVEVVASLKNKQVCLDPEAPFLKKVIQKILDSGNKKN

SGP**TRRRLE** - GFP Tag - V

Restriction Sites: Sgfl-RsrII



[View online »](#)

Cloning Scheme:


ACCN: NM_002993

ORF Size: 342 bp

OTI Disclaimer: The molecular sequence of this clone aligns with the gene accession number as a point of reference only. However, individual transcript sequences of the same gene can differ through naturally occurring variations (e.g. polymorphisms), each with its own valid existence. This clone is substantially in agreement with the reference, but a complete review of all prevailing variants is recommended prior to use. [More info](#)

OTI Annotation: This clone was engineered to express the complete ORF with an expression tag. Expression varies depending on the nature of the gene.

Components: The ORF clone is ion-exchange column purified and shipped in a 2D barcoded Matrix tube containing 10ug of transfection-ready, dried plasmid DNA (reconstitute with 100 ul of water).

Reconstitution Method:

1. Centrifuge at 5,000xg for 5min.
2. Carefully open the tube and add 100ul of sterile water to dissolve the DNA.
3. Close the tube and incubate for 10 minutes at room temperature.
4. Briefly vortex the tube and then do a quick spin (less than 5000xg) to concentrate the liquid at the bottom.
5. Store the suspended plasmid at -20°C. The DNA is stable for at least one year from date of shipping when stored at -20°C.

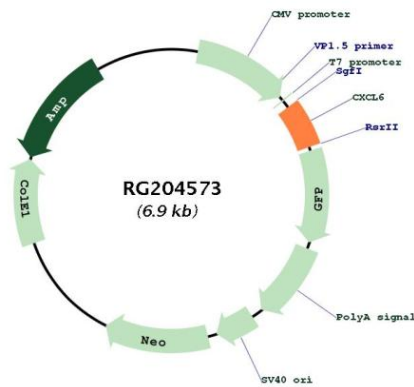
RefSeq: [NM_002993.4](#)

RefSeq Size: 1539 bp

RefSeq ORF: 345 bp

Locus ID:	6372
UniProt ID:	P80162
Cytogenetics:	4q13.3
Domains:	IL8
Protein Families:	Druggable Genome, Secreted Protein
Protein Pathways:	Chemokine signaling pathway, Cytokine-cytokine receptor interaction
Gene Summary:	The protein encoded by this gene is a member CXC chemokine family. The encoded protein is a chemotactic for neutrophil granulocytes and has antibacterial action against gram-negative and gram-positive bacteria. This gene and other members of the CXC chemokine gene family form a gene cluster in a region of chromosome 4q. [provided by RefSeq, Jun 2020]

Product images:



Circular map for RG204573