

Product datasheet for **RG204570**

PPWD1 (NM_015342) Human Tagged ORF Clone

Product data:

Product Type:	Expression Plasmids
Product Name:	PPWD1 (NM_015342) Human Tagged ORF Clone
Tag:	TurboGFP
Symbol:	PPWD1
Mammalian Cell Selection:	Neomycin
Vector:	pCMV6-AC-GFP (PS100010)
E. coli Selection:	Ampicillin (100 ug/mL)



[View online »](#)

ORF Nucleotide Sequence:

>RG204570 representing NM_015342
 Red=Cloning site Blue=ORF Green=Tags(s)

TTTTGTAATACGACTCACTATAGGGCGGCCGGGAATTCGTCGACTGGATCCGGTACCGAGGAGATCTGCC
 GCC**CGCATCGCC**

ATGGCGCGGAAAGTGGTAGCGATTTTCAGCAGAGACGTAGAAGGCGCCGGGACCCGGAGGAACCGGAAA
 AACAGAACTCAGCGAAAGAGAGCTGGCAGTAGCAGTGGCGGTGCCAGGAGAACGATGAGGAGAACGA
 AGAGCGCTGGGTTGGACCTTTACCTGTGGAGGCAACACTGGCCAAGAAGAGGAAAGTCTTAGAGTTTGAA
 AGAGTCTATCTTGATAATCTCCCAAGTGCATCCATGTATGAGCGCAGTTACATGCATAGAGATGTTATCA
 CCCATGTGGTATGCACCAAAACAGATTTTATTACTGCCAGTCATGATGGACATGTCAAGTTCTGGAA
 AAAAATAGAAGAGGGAATTGAATTTGTTAAACATTTTCGTAGTCACCTGGGAGTTATTGAGAGTATTGCA
 GTTAGCTCTGAGGGAGCATTGTTCTGTTCTGTGGGTGATGATAAAGCAATGAAGGTGTTGATGTAGTGA
 ACTTTGACATGATCAACATGCTGAAACTTGGCTATTTCTGGACAGTGTGAGTGGATCTATTGCCCAGG
 GGATGCAATTTCTCAGTTGCTGCTCCGAAAAGAGTACAGGAAAAATTTTCATTTATGATGGCCGAGGA
 GATAACCAGCCACTTCATATTTTGACAACTCCATACATCACCTTACTCAGATACGGCTAAACCCAG
 TTTACAAAGCAGTAGTGTCTTCTGACAAATCTGGGATGATTGAATACTGGACTGGGCTCCTCATGAATA
 TAAATCCCAAAAATGTGAACTGGGAATATAAACTGACACTGATTTATGAATTTGCCAAGTGAAG
 GCTTATCCAACAGCGTATGTTTTCCACAGATGGGAAGAAAAAGTACTATTGGTTCTGATAGAAAAG
 TTAGAATTTTCAGATTTGTAAGTAACTGGAAGTCAATGAGAGTCTTTGATGAATCACTAAGCATGTTTACTGA
 ACTGCAACAGATGAGGCAACAGTTACCAGACATGGAATTTGGCCGACGAATGGCTGTAAGACGTGAGTTG
 GAGAAGGTTGATGCTGTAAGATTAATTAATATAGTTTTGATGAACTGGACACTTCGTGCTGTATGGAA
 CAATGCTGGCATTAAAGTTATAAATGTAGAGACAAACCGGTGTGTGCGGATTTTAGGCAACAAGAAAA
 TATTAGAGTGATGCAATTGGCTTTGTTCCAGGGATAGCCAAAAAGCATCGTGCTGCAACTACTATAGAA
 ATGAAAGCTTCTGAAAATCCTGTTCTTCCAGAAATTTCAAGCTGACCCAACAATAGTCTGTACATCATTCA
 AAAAGAATAGATTTTATATGTTTACCAAACGAGAACCAGAAGATACGAAAAGTGCAGATTCTGATCGAGA
 TGTTTTAATGAGAAACCTTCTAAAGAAGAAGTCAATGGCAGTACTCAAGCTGAAGGACCTAAACGAGTT
 TCGGACAGTGCCATTATCCACACCAGCATGGGAGACATTCACACCAAACTTTTCTGTTGAGTGCCCTA
 AGACAGTGAAAACCTTCTGTGTTACAGCAGAAATGGTTATTATAATGGGCATACATTTACCCTATAAT
 TAAGGCTTTATGATTCAGACTGGAGATCCAACAGGACTGATGTTGGGAGGAGAAAGCATATGGGGAGGA
 GAATTTGAAGATGAATTTCAATCAACATTACGACATGACAGGCCGTACACACTCAGCATGGCTAACGCGG
 GATCAAACTACTAATGGATCCAGTTTTTATAACGGTAGTACCAACGCCCTTGGCTTGATAATAAGCATA
 AGTATTTGGACGAGTACTAAAGGAATGGAAGTTGACAGAGGATCTCCAACGTCAAAGTCAATCCCAAA
 ACAGATAAGCCCTATGAGGATGTCAGCATCATAAATTTACTGTCAAG

ACGCGTACGCGGCCGCTCGAG – GFP Tag – GTTTAA

Protein Sequence:

>RG204570 representing NM_015342
 Red=Cloning site Green=Tags(s)

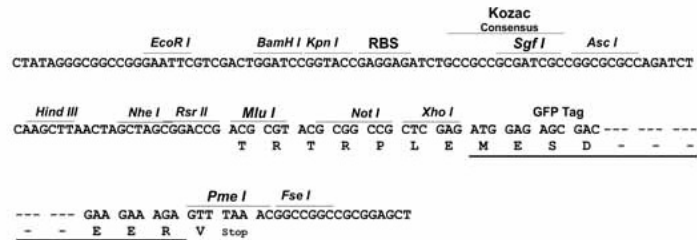
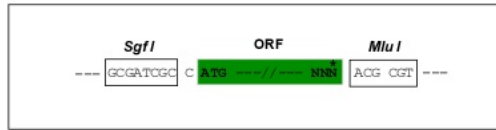
MAESGSDFQRRRRRRDPEEPEKTELSERELAVAVAVSQENDEENEERWVGPLPVEATLAKKRKVFLEFE
 RYVLDNLPASMYERSYMRDVIITHVVTCTDFIITASHDGHVKFWKIEEGIEFVKHFRSHLGVIESIA
 VSSEGALFCSVGGDDKAMKVFDDVNFDMINMLKLYFPQGCEWIYCPGDAISSVAASEKSTGKIFIYDGRG
 DNQPLHIFDKLHTSPLTQIRLNPVYKAVVSSDKSGMIEYWTGPPHEYKFPKNNVWEYKTDLDL YEFACKK
 AYPTSVCFSPDGKKIATIGSDRVRIFRFVTGKLMRVFDESLSMFTELQQMRQQLPMEFGRRMAVEREL
 EKVDVAVRLINIVFDETHGFVLYGTMLGIKVINVETNRCVRILGKQENIRVMQLALFQGIKKHRAATTIE
 MKASENPVLQNIQADPTIVCTSFKKNRFYMFTRKREPEDTKSADSDRDVFNKPSKEEVMAATQAEQPKRV
 SDSAIIHTSMGDIHTKLFVVECPKTVENFCVHSRNGYNGHTFHRIKGFMIQTGDPTGTGMGGESIWGG
 EFEDEFHSTLRHDPYTLSMANAGSNTNGSQFFITVVPWPWLDNKHTVFRVTKGMEVVQRI SNVKVNP
 TDKPYEDVSIINITVK

TRTRPLE – GFP Tag – V

Restriction Sites: SgfI-MluI

Cloning Scheme:

Cloning sites used for ORF Shutting:



ACCN: NM_015342

ORF Size: 1938 bp

OTI Disclaimer: The molecular sequence of this clone aligns with the gene accession number as a point of reference only. However, individual transcript sequences of the same gene can differ through naturally occurring variations (e.g. polymorphisms), each with its own valid existence. This clone is substantially in agreement with the reference, but a complete review of all prevailing variants is recommended prior to use. [More info](#)

OTI Annotation: This clone was engineered to express the complete ORF with an expression tag. Expression varies depending on the nature of the gene.

Components: The ORF clone is ion-exchange column purified and shipped in a 2D barcoded Matrix tube containing 10ug of transfection-ready, dried plasmid DNA (reconstitute with 100 ul of water).

Reconstitution Method:

1. Centrifuge at 5,000xg for 5min.
2. Carefully open the tube and add 100ul of sterile water to dissolve the DNA.
3. Close the tube and incubate for 10 minutes at room temperature.
4. Briefly vortex the tube and then do a quick spin (less than 5000xg) to concentrate the liquid at the bottom.
5. Store the suspended plasmid at -20°C. The DNA is stable for at least one year from date of shipping when stored at -20°C.

RefSeq: [NM_015342.1](#), [NP_056157.1](#)

RefSeq Size: 2110 bp

RefSeq ORF: 1941 bp

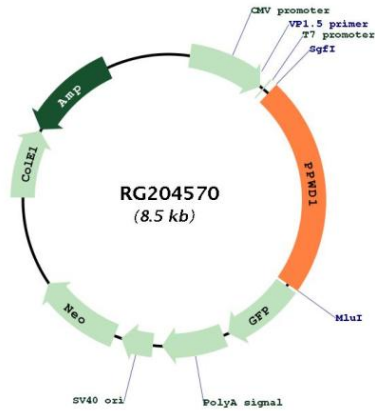
Locus ID: 23398

UniProt ID: [Q96BP3](#)

Cytogenetics: 5q12.3

Gene Summary: PPIase that catalyzes the cis-trans isomerization of proline imidic peptide bonds in oligopeptides and may therefore assist protein folding (PubMed:20676357). May be involved in pre-mRNA splicing (PubMed:11991638).[UniProtKB/Swiss-Prot Function]

Product images:



Circular map for RG204570