

Product datasheet for **RG204569**

HPS3 (NM_032383) Human Tagged ORF Clone

Product data:

Product Type:	Expression Plasmids
Product Name:	HPS3 (NM_032383) Human Tagged ORF Clone
Tag:	TurboGFP
Symbol:	HPS3
Synonyms:	BLOC2S1; SUTAL
Mammalian Cell Selection:	Neomycin
Vector:	pCMV6-AC-GFP (PS100010)
E. coli Selection:	Ampicillin (100 ug/mL)
ORF Nucleotide Sequence:	>RG204569 representing NM_032383 Red=Cloning site Blue=ORF Green=Tags(s)

TTTTGTAATACGACTCACTATAGGGCGGCCGGAATTCGTCGACTGGATCCGGTACCGAGGAGATCTGCC
GCC**CGATCGCC**

ATGGTGCAGCTGTACAACCTGCACCCGTTCCGGTTCGCAGCAGGTGGTGCCTGCAAGCTGGAGCCGGACC
GGTTCTGTGGCGGGGGCGTGACGCGTTTTCTGTGGCGCGGGCTGCAAGGTGGAGGCGTTCGCGGTGGC
CGGCCAGGAGCTGTGCCAGCCGCGGTGCGCCTTCTCCAGCTGGGCCGGGTGTTGCGCTGGCCTACAGC
GAGGCTGGAGATTATTTGGTAGCAATTGAAGAGAAAAACAAAGCTACATTTCTACGTGCTTATGTGAACT
GGAGAAATAAAAGGACTGAAAACCTCTCGTGTGTATCCGAATGATTGGGCATAATGTGGAGGGACCATT
CAGCAAAGCCTTCAGAGACCAGATGTACATTATTGAAATGCCGCTTCGGAGGCCCTTGTGCATTTC
TGTGGCCTGTGAAAGGAGACCTTCTCGTTGGCTGCACAAATAAATTAGTCTTATTTAGTTTGAAGTACC
AGATCATTAAATGAGGAATTCTCACTATTGGACTTTGAACGTTCTTTAATTATACACATAGATAATATCAC
TCCTGTTGAGGTTTTTTTTGTGTTGGATATGTTGCTGTCATGTCAGACTTAGAAGTCTTAATCGTAAAA
CTGGAGTCAGGCCCTAAAAATGGAGAGAGAGTTACCACCATCCACATAAGACCAACAATCGAATAAGAC
GGACAGAAGAAGGCATCAGTAATGAAATTTACAGCTTGAGTCAGATGATTTTGCATCTGCCAGAAGCC
CCTGGAACCTCTTGGTAAAAAAGTGAACAGTCTGGATTATCTGTTACACTGGAGTCTACGGGATTAGCT
GATGAAAAAAGAAAATATCCCACTTTCCAGCACCTGCTCTATAGACGTTTTGCTCCTGATATTTCTGCTCCT
ATGCTTTGTCTGATGACATCAAGCTACATTCCTCCAGCTGCTACCCATTTACCAGACCGGTTCTCTTAC
ATCTGATGAAAAAATTTGTCTCAGAAAAAGAATTGCTGAGTCTCTTTTCTTTTCTCCTTACCTCAT
GTGGGCTATCTCTACATGGTTGTCAAATCTGTTGAATTGATGTCAGTCTACCAGTATCCTGAAAAGTCTC
AGCAGGCAGTACTCACGCCACAATTTTTGCACGTCATTACAAGTAACAACCTGCAGTGTTTCACTGTGCG
GTGCAGTGCAGCGGCAGCTCGTGAGGAGGACCCGTACATGGACACCCTGAAGCTTGCCACCTGTC
AGTATGGATGTCTGTGCTTAAAGAATACAGCTTTTCATAGGCTTGAAAGCCATCTGTCACTTAAAAACC
ACATCATACTTTTACTAAAGCAGAACCTGAAGCCATTCCAGAGAGAAGACAGTACCCAAGAGGCTTCT
TTCAGAAAAAGATACCAGTGTTAAAATCAAATACCTCCTGTAGCTGAGGCTGGGTGGAATTTGTATATT



[View online >](#)

GTGAATACGATCTCACCAGTGCAACTGTACAAAGAGATGGTAGACTATAGCAATACCTATAAGACTGTCA
 AAACCCAGAGCTGCATTACCTTCTCAGTGAGGCTCATCTGTTAGTGCGAGCTGCCTGATGGATGCCAG
 TCAGCTGGAACTGGAGAGAAGGCAGAGCTTTTGGAAAGCATTTAAGGAAAGCTGTGGGCACCTTGGGGAC
 TGTTACAGCAGGCTTACTCCCAGCATTCTCATCTCACCTTGCCATACTATAAGATGTCTGGTTTGTCTA
 TGGCTGAAGTTCTGGCCCGCAGGACTGGACAGTAGAGGATGGATTACAGAAATACGAGAGAGGATTAAT
 CTTTTACATTAATCATTCACTTTATGAAAACCTGGATGAAGAATTAATGAAGAATTAGCAGCAAAAAGTG
 GTTCAGATGTTTTATGTGGCTGAGCCAAAGCAAGTGCCCATATTTCTGTAGTCCTTCTATGAAGAATA
 TTAATCCTTTAACTGCCATGAGCTATCTAAGGAAGCTGGATACTTCTGGGTTTTATCGATCTTAGTGAC
 ATTGACCAAGGCAGCAGTGGCTCTGAAAATGGGAGATCTTGACATGCACAGAAATGAAATGAAAAGCCAT
 TCAGAGATGAAGTTGGTATGTGGCTTATTCTGGAACCTCGGCTGTTGATTCAACAGAGAAAAGGACAGA
 TTGTTCCAACCGAGCTTGCACCTTCACTTGAAGGAACTCAGCCTGGATTGCTTGTGGCTTCACTTCTGGG
 CTTGCAGAAGAACAACAAAATTGGAATTGAAGAAGCAGATTCTTTTTTAAAGTGCTTTGTGCTAAGGAT
 GAAGATACAATTCCTCAGCTCTTGGTAGACTTTTGGGAAGCTCAGCTAGTGGCATGTCTCCAGATGTGG
 TACTTCAGGAACCTTTTTCAAACCTCACATCACAGTACATCTGGAGATTGTCTAAGAGGCAGCCTCTGA
 CACCACACCATTGCGAACATCGGAGGATCTGATAAATGCCTGTAGTCATTATGGCTTAATTTATCCATGG
 GTTCACGTCGTAATATCATCTGATTCTTTAGCTGATAAAAATTATACAGAAGATCTTTCAAATACAGT
 CTCTTATATGTGGTCTTCAATTTGACATAGCTTCCATTATTCCGTTCTTGAGGCCACTTTTCAAGACAC
 TATTGCCGGCCTCAGTGTCCATGTTCTGTGTGCTACACGCTTGAAGAGTATGAACAGTGCATAGACATA
 CTGTTAGAGAGATGCCCGGAGGCAGTCACTTCCATATGCTAATCATGAACTGAAAGAAGAGAACCGGACTC
 TGTGGTGGAAAAAAGTGTGCTGAACTTTGTGAGAGAATAAAAATGTGGTGGAGAGAAGTATCAACTCTA
 CCTGTCATCATTAAAAGAAACATTGTCAATTGTTGCTGTGGAAGTGAAGTGAAGGATTTATGAATGTT
 CTCCCAGAAGATGGTACTGCAACATTTTTCTTGCCATATCTTCTATTGCAGTCGAAAGAAACCATTGA
 CT

ACGCGTACGCGGCCGCTCGAG - GFP Tag - GTTTAA

Protein Sequence:

>RG204569 representing NM_032383
 Red=Cloning site Green=Tags(s)

MVQLYNLHPFGSQVVPCKLEPDRFCGGGRDALFVAAGCKVEAFVAVAGQELCQPRCAFSTLGRVRLAYS
 EAGDYLVAIEEKNKATFLRAYVNWNRKRTENSRVCIRMIGHNVEGPFKAFRDQMYIIEMPLSEAPLCIS
 CCPVKGDLLVGCTNKLVLFLSKYQIINEEFSLDFERSLIIHIDNITPVEVSFCVGYVAVMSDLEVLIVK
 LESGPKNGERVHHHPKTNRRIRTEEGISNEISQLESDDFVICQKPLELLGEKSEQSGLSVTLESTGLA
 DEKRKYSHFQHLLYRRFAPDISSVYVLSDDIKLHSLQLLPIYQTGSLTSDGKNLSQEKELLSLFCFFSLPH
 VGYLYMVVKSVELMSVYQYPEKSQAVLTPQFLHVITSNNLQCFVTRCSAAAAREEDPYMDTTLKACPPV
 SMDVICALRIQLF IGLKAICHFKNHIILLTKAEPEATPERRQSPKRLLSRKDTSVKIKIPPVAEAGWNLYI
 VNTISPVQLYKEMVDYSNTYKTVKTQSCIHLLSEHLLVRAALMDASQLEPGEKELLEAFKESCGHLGD
 CYSRLDSQHSHTLPYYKMSGLSMAEVLARTDWTVEDGLQKYERGLIFYINHSLYENLDEELNEELAAKV
 VQMFYVAEPKQVPHILCSPSMKNINPLTAMSYLRKLDTSGFSSILVTLTKAAVALKMGDLDMHRNEMKSH
 SEMKLVCGFIFLEPRLLIQQRKGQIVPTELALHLKETQPGLLVASVLGLQKNNKIGIEEADSFVKVLCAD
 EDTIPQLLVDFWEAQLVACLPDVVLQELFFKLT SQYIWRLSKRQPPDTPLRSEDLINACSHYGLIYPW
 VHVVISSDSLADKNYTEDLSKLSLIGGPSFDIASIIPFLEPLESDTIAGLSVHVLCRTRLKEYEQCIDI
 LLERCPEAVIPYANHELKEENRTLWKKLLPELCQRIKCGGEKYQLYLSLKETLSIVAVELELKDPMNV
 LPEDGTATFFLPYLLYCSRKKPLT

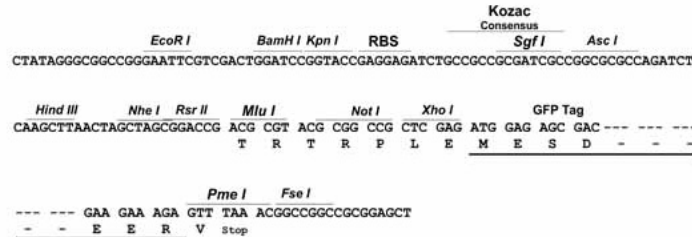
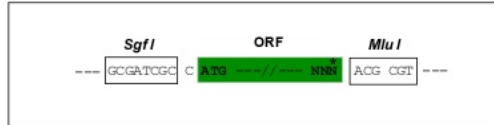
TRTRPLE - GFP Tag - V

Restriction Sites:

Sgfl-MluI

Cloning Scheme:

Cloning sites used for ORF Shutting:


ACCN: NM_032383

ORF Size: 3012 bp

OTI Disclaimer: The molecular sequence of this clone aligns with the gene accession number as a point of reference only. However, individual transcript sequences of the same gene can differ through naturally occurring variations (e.g. polymorphisms), each with its own valid existence. This clone is substantially in agreement with the reference, but a complete review of all prevailing variants is recommended prior to use. [More info](#)
OTI Annotation: This clone was engineered to express the complete ORF with an expression tag. Expression varies depending on the nature of the gene.

Components: The ORF clone is ion-exchange column purified and shipped in a 2D barcoded Matrix tube containing 10ug of transfection-ready, dried plasmid DNA (reconstitute with 100 ul of water).

Reconstitution Method:

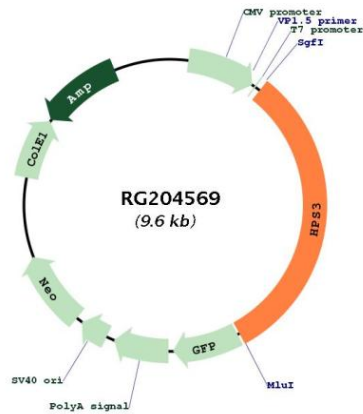
1. Centrifuge at 5,000xg for 5min.
2. Carefully open the tube and add 100ul of sterile water to dissolve the DNA.
3. Close the tube and incubate for 10 minutes at room temperature.
4. Briefly vortex the tube and then do a quick spin (less than 5000xg) to concentrate the liquid at the bottom.
5. Store the suspended plasmid at -20°C. The DNA is stable for at least one year from date of shipping when stored at -20°C.

RefSeq: [NM_032383.3](#), [NP_115759.2](#)
RefSeq Size: 4451 bp

RefSeq ORF: 3015 bp
 Locus ID: 84343
 UniProt ID: [Q969F9](#)
 Cytogenetics: 3q24
 Gene Summary:

This gene encodes a protein containing a potential clathrin-binding motif, consensus dileucine signals, and tyrosine-based sorting signals for targeting to vesicles of lysosomal lineage. The encoded protein may play a role in organelle biogenesis associated with melanosomes, platelet dense granules, and lysosomes. Mutations in this gene are associated with Hermansky-Pudlak syndrome type 3. [provided by RefSeq, Apr 2015]

Product images:



Circular map for RG204569