

## Product datasheet for **RG204567**

### THRSP (NM\_003251) Human Tagged ORF Clone

#### Product data:

**Product Type:** Expression Plasmids  
**Product Name:** THRSP (NM\_003251) Human Tagged ORF Clone  
**Tag:** TurboGFP  
**Symbol:** THRSP  
**Synonyms:** Lpgp; LPGP1; S14; SPOT14; THRP  
**Mammalian Cell Selection:** Neomycin  
**Vector:** pCMV6-AC-GFP (PS100010)  
**E. coli Selection:** Ampicillin (100 ug/mL)  
**ORF Nucleotide Sequence:** >RG204567 representing NM\_003251  
Red=Cloning site Blue=ORF Green=Tags(s)

TTTTGTATACGACTCACTATAGGGCGGCCGGAATTCGTCGACTGGATCCGGTACCGAGGAGATCTGCC  
 GCCCGATCGCC

ATGCAGGTGCTAACCAAGCGTTACCCCAAGAACTGCCTGCTGACCGTCATGGACCGGTATGCAGCCGAGG  
TGCACAACATGGAGCAGGTGGTATGATCCCCAGCCTTCTGCGGGACGTGCAGCTGAGTGGGCCTGGGG  
CCAGGCCAGGCTGAGGCCCTGATCTCTACACCTACTTCACCATGCTCAAGGCCATCTGTGTGGATGTG  
GACCATGGGCTGCTGCCGCGGAGGAGTGGCAGGCCAAGGTGGCAGGCAGCGAAGAGAATGGAACCGCAG  
AGACAGAGGAAGTCGAGGACGAGAGTGCCTCAGGAGAGCTGGACCTGGAAGCCCAGTTCCACCTGCACTT  
CTCCAGCCTCCATCACATCCTCATGCACCTCACCGAGAAAGCCCAGGAGGTGACAAGGAAATACCAGGAA  
ATGACGGGACAAGTTTGG

ACGCGTACGCGGCCGCTCGAG - GFP Tag - GTTTAA

**Protein Sequence:** >RG204567 representing NM\_003251  
Red=Cloning site Green=Tags(s)

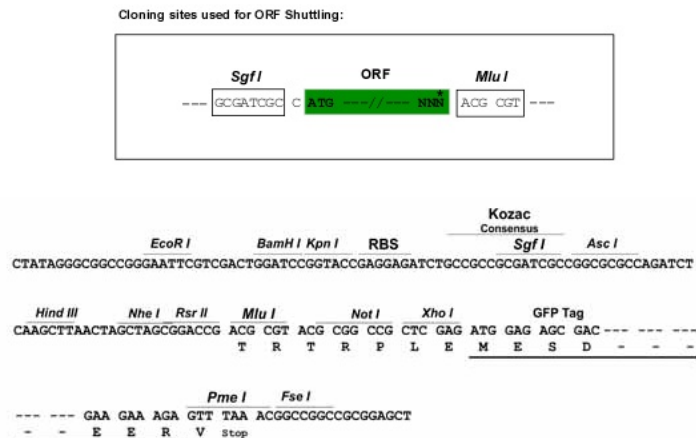
MQVLTKRYPKNCLLTVMdryAAEVHNMEQVVMIPSLLRDVQLSGPGGQAQAEAPDLYTYFTMLKAICVDV  
 DHGLLPREWQAKVAGSEENGTAETEEVEDESASGELDLEAQFHLHFSSLHHILMHLTEKAQEVTRYQE  
 MTGQVW

TRTRPLE - GFP Tag - V

**Restriction Sites:** SgfI-MluI



[View online »](#)

**Cloning Scheme:**


**ACCN:** NM\_003251

**ORF Size:** 438 bp

**OTI Disclaimer:** The molecular sequence of this clone aligns with the gene accession number as a point of reference only. However, individual transcript sequences of the same gene can differ through naturally occurring variations (e.g. polymorphisms), each with its own valid existence. This clone is substantially in agreement with the reference, but a complete review of all prevailing variants is recommended prior to use. [More info](#)

**OTI Annotation:** This clone was engineered to express the complete ORF with an expression tag. Expression varies depending on the nature of the gene.

**Components:** The ORF clone is ion-exchange column purified and shipped in a 2D barcoded Matrix tube containing 10ug of transfection-ready, dried plasmid DNA (reconstitute with 100 ul of water).

**Reconstitution Method:**

1. Centrifuge at 5,000xg for 5min.
2. Carefully open the tube and add 100ul of sterile water to dissolve the DNA.
3. Close the tube and incubate for 10 minutes at room temperature.
4. Briefly vortex the tube and then do a quick spin (less than 5000xg) to concentrate the liquid at the bottom.
5. Store the suspended plasmid at -20°C. The DNA is stable for at least one year from date of shipping when stored at -20°C.

**Note:** Plasmids are not sterile. For experiments where strict sterility is required, filtration with 0.22um filter is required.

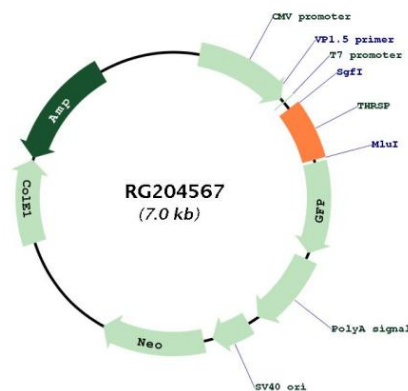
**RefSeq:** [NM\\_003251.4](#)

**RefSeq Size:** 1207 bp

**RefSeq ORF:** 441 bp

Locus ID:	7069
UniProt ID:	<a href="#">Q92748</a>
Cytogenetics:	11q14.1
Protein Families:	Transcription Factors
Gene Summary:	The protein encoded by this gene is similar to the gene product of S14, a rat gene whose expression is limited to liver and adipose tissue and is controlled by nutritional and hormonal factors. This gene has been shown to be expressed in liver and adipocytes, particularly in lipomatous modules. It is also found to be expressed in lipogenic breast cancers, which suggests a role in controlling tumor lipid metabolism. [provided by RefSeq, Jul 2008]

## Product images:



Circular map for RG204567